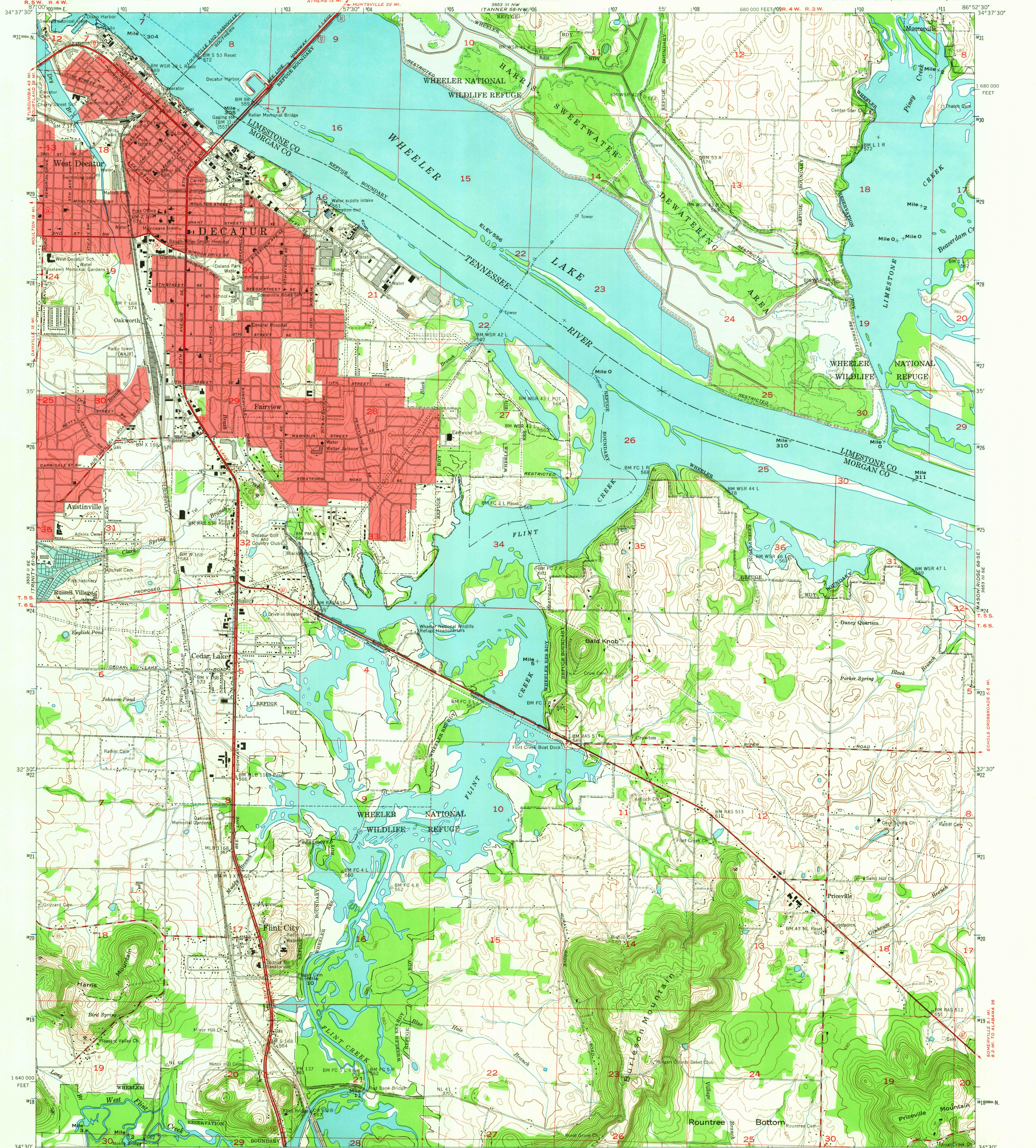


UNITED STATES
DEPARTMENT OF THE INTERIOR
GEOLOGICAL SURVEY

UNITED STATES
TENNESSEE VALLEY AUTHORITY
MAPS AND SURVEYS BRANCH

DECATUR QUADRANGLE
ALABAMA
7.5 MINUTE SERIES (TOPOGRAPHIC) 68-SW



Mapped and edited by Tennessee Valley Authority
Published by the Geological Survey

Control by USGS, USGS, and TVA

Revised by TVA in 1961 by photogrammetric methods using
aerial photographs taken 1961 and by reference to TVA-USGS
quadrangle dated 1950. Map field checked by TVA, 1963

Polycyclic projection, 1927 North American datum
10,000-foot grid based on Alabama (West)
rectangular coordinate systems
1000 meter Universal Transverse Mercator Grid ticks,
Zone 16, shown in blue

Fine red dashed lines indicate selected fence and field lines
visible on aerial photographs. This information is unchecked

Red tint indicates areas in which only landmark buildings are shown

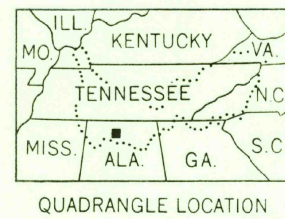
UTM GRID and 1963 MAGNETIC NORTH
DECLINATION AT CENTER OF SHEET

SCALE 1:24,000

CONTOUR INTERVAL 10 FEET
DASHED LINES REPRESENT HALF-INTERVAL CONTOURS
DATUM IS MEAN SEA LEVEL

THIS MAP COMPLIES WITH NATIONAL MAP ACCURACY STANDARDS

FOR SALE BY U.S. GEOLOGICAL SURVEY, WASHINGTON 25, D.C.
AND BY U.S. TENNESSEE VALLEY AUTHORITY, CHATTANOOGA OR KNOXVILLE, TENN.
A FOLDER DESCRIBING TOPOGRAPHIC MAPS AND SYMBOLS IS AVAILABLE ON REQUEST



QUADRANGLE LOCATION

ROAD CLASSIFICATION
Heavy-duty Poor motor road
Medium-duty Wagon and jeep track
Light-duty Foot trail
U. S. Route State Route
In developed areas, only through roads are classified

U.S.G.S.
FILE COPY
TOPOGRAPHIC DIVISION
HISTORICAL

DECATUR, ALA.

N3430-W8652.5/7.5

1963

AMS 3653 III SW-SERIES 9B44

USGS
Historical File
Topographic Division

2670

SEP 1 1966