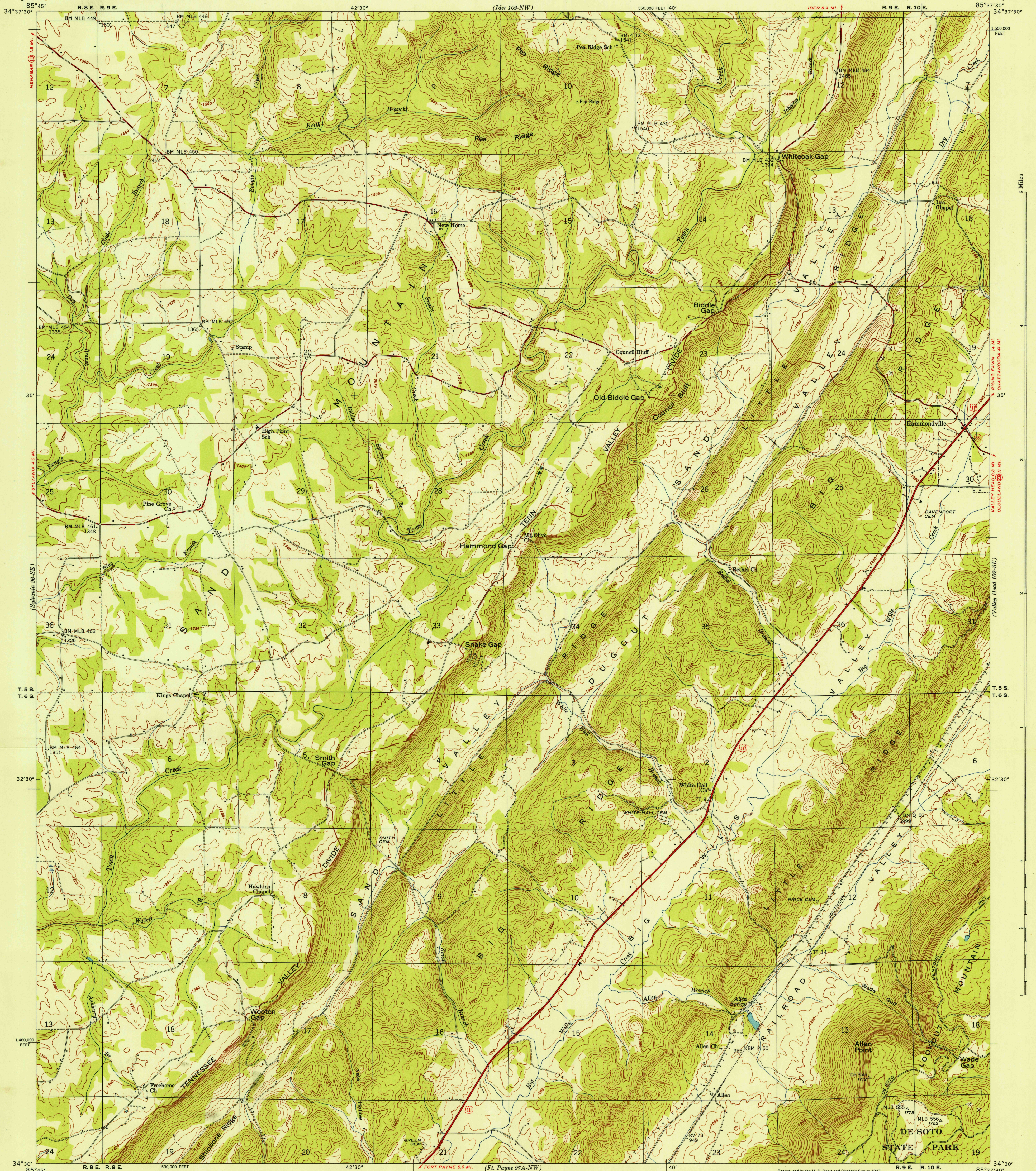
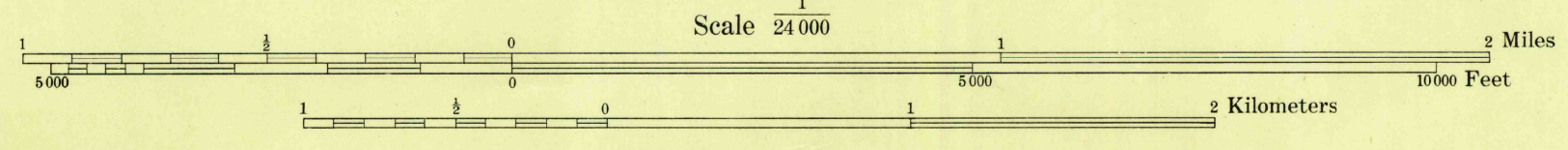


U.S.G.S.  
FILE COPY  
Inspection and Editing



Control by USC&GS, USGS, and TVA  
Topography by USGS and TVA from aerial  
photographs by stereophotogrammetric methods  
Field examination by Tennessee Valley Authority, 1946  
Maps distributed by the Geological Survey

APPROXIMATE MEAN  
MAGNETIC NORTH  
1947



Contour interval 20 feet  
Datum is mean sea level

Reproduced by the U. S. Coast and Geodetic Survey 1947  
Polyconic projection. 1927 North American datum  
10,000 foot grid based on Alabama (East)  
rectangular coordinate system

USCS  
Historical File  
Topographic Division  
FILE COPY  
Inspection and Editing.

ROUTES USUALLY TRAVELED  
HARD, IMPERVIOUS SURFACES  
OTHER SURFACE IMPROVEMENTS  
U. S. ROUTE STATE ROUTE  
DUGOUT VALLEY, ALA.  
102-SW  
Edition of 1947  
N3430-W837.5/7.5

HISTORICAL