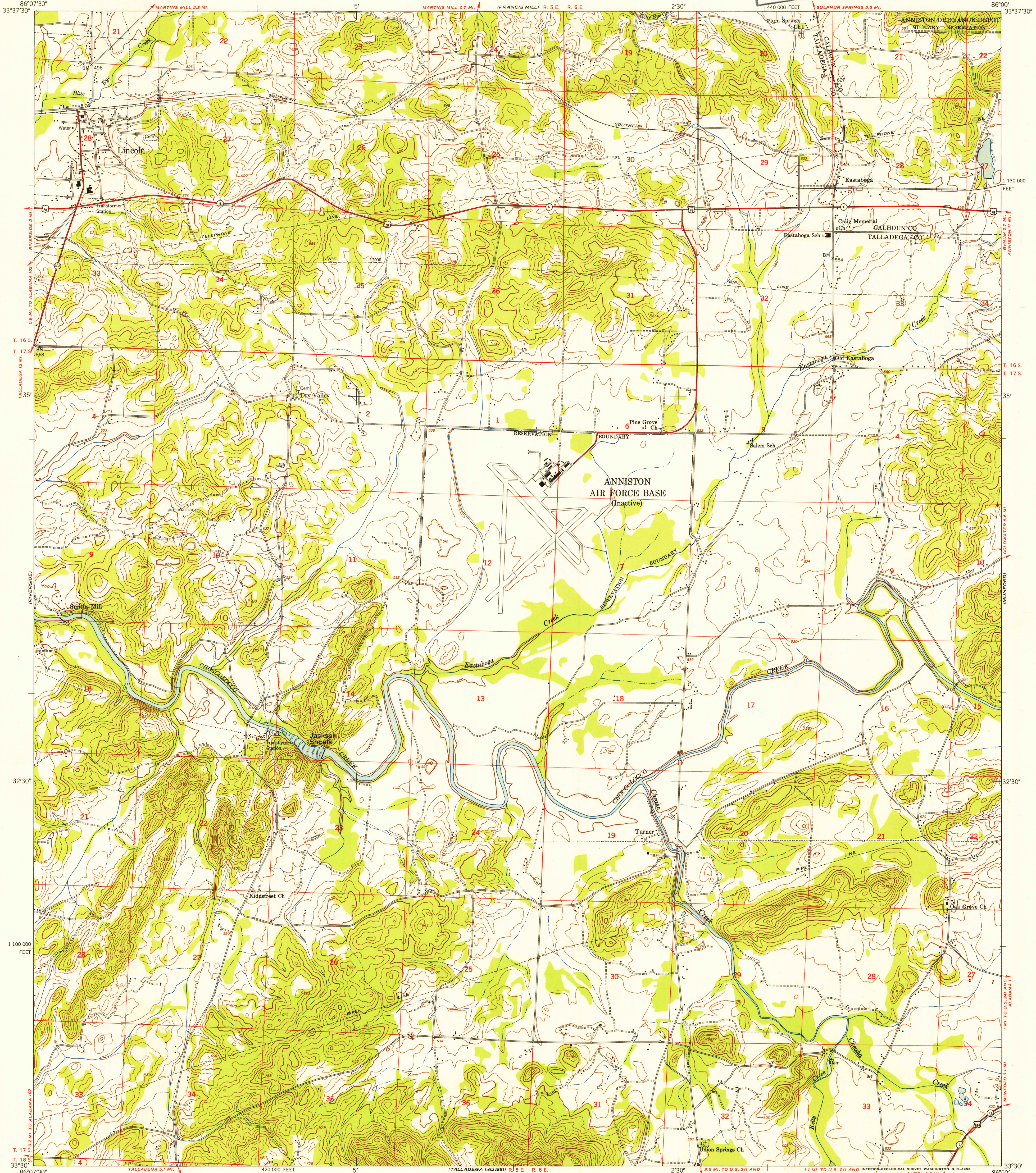
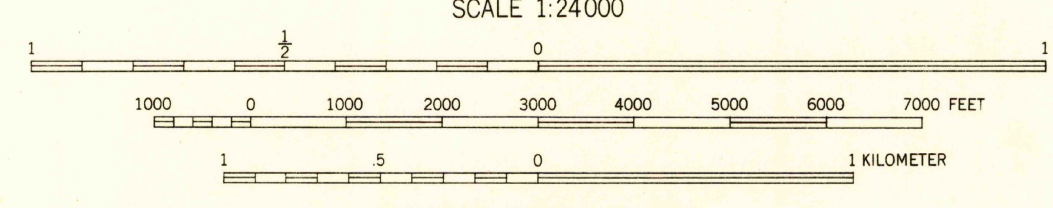


U.S.G.S.
FILE COPY
Inspection and Editing



Mapped by the Army Map Service
Published for civil use by the Geological Survey
Control by USGS, USC&GS, and USCE
Topography from aerial photographs by multiple methods
Aerial photographs taken 1946. Field check 1947
Polyconic projection. 1927 North American datum
10,000-foot grid based on Alabama coordinate system,
east zone
No distinction is made between barns, dwellings,
commercial and industrial buildings
Unchecked elevations are shown in brown.
Dashed land lines indicate approximate locations

TRUE NORTH
MAGNETIC NORTH
APPROXIMATE MEAN
DECLINATION, 1947



CONTOUR INTERVAL 20 FEET
DATUM IS MEAN SEA LEVEL

THIS MAP COMPLIES WITH NATIONAL MAP ACCURACY STANDARDS
FOR SALE BY U. S. GEOLOGICAL SURVEY, WASHINGTON 25, D. C.
A FOLDER DESCRIBING TOPOGRAPHIC MAPS AND SYMBOLS IS AVAILABLE ON REQUEST

USGS
Historical File
Topographic Division

ROAD CLASSIFICATION
Heavy-duty 4 LANE 6 LANE Light-duty
Medium-duty 2 LANE 6 LANE Unimproved dirt
U. S. Route State Route



U.S.G.S.
FILE COPY
Inspection and Editing

EASTABOGA, ALA.
SE/4 RAGLAND 15' QUADRANGLE
N3330-W8600/7.5
1947