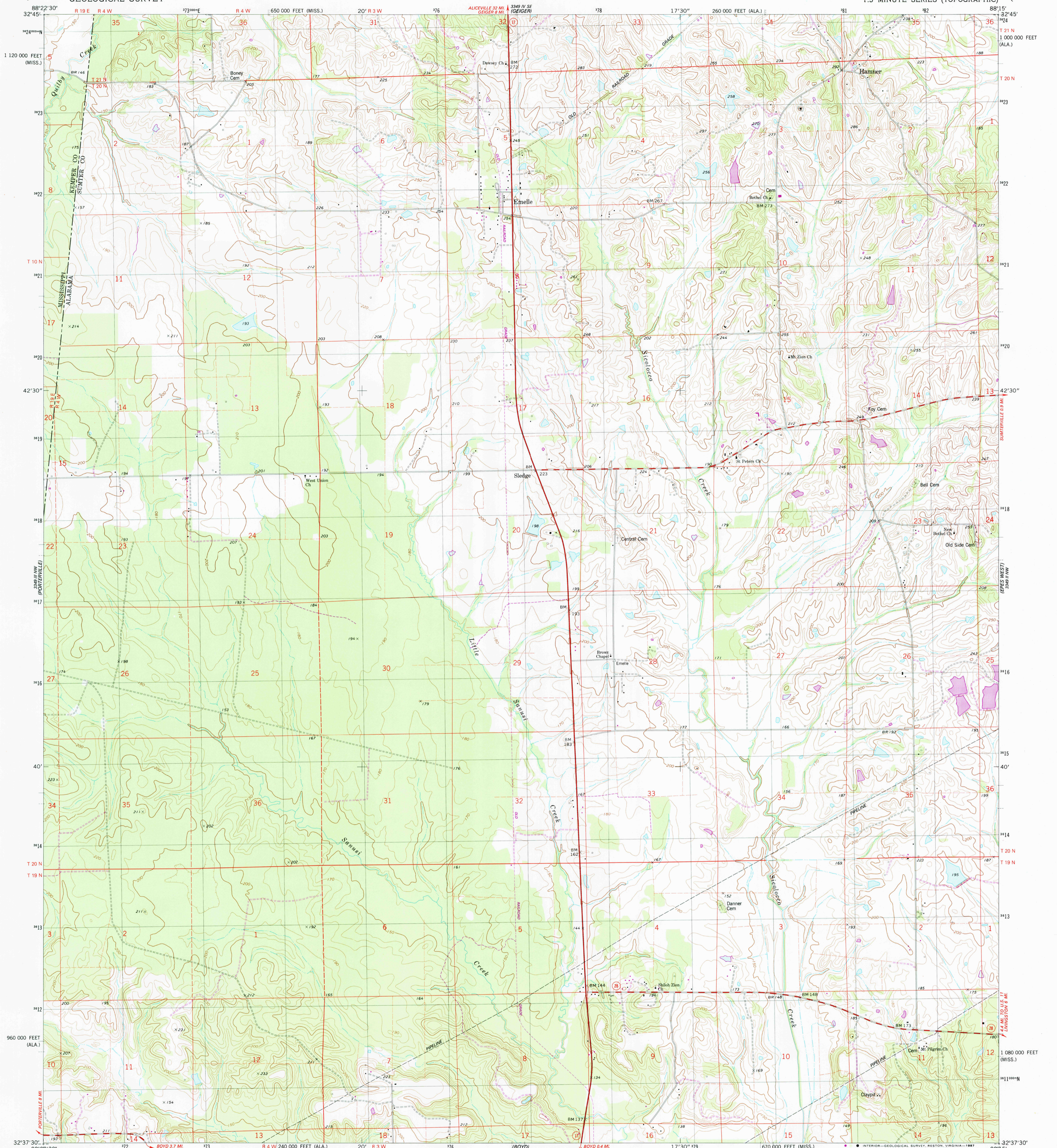
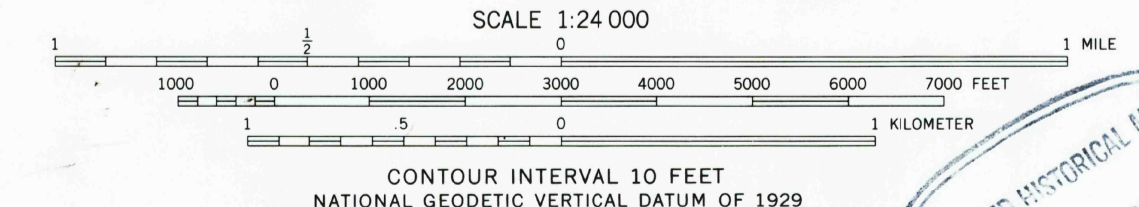
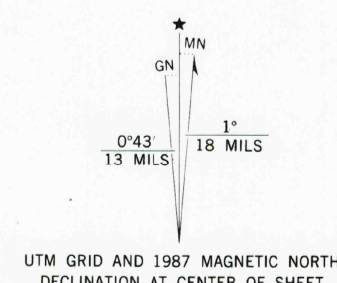


UNITED STATES  
DEPARTMENT OF THE INTERIOR  
GEOLOGICAL SURVEY

EMELLE QUADRANGLE  
ALABAMA - MISSISSIPPI  
7.5 MINUTE SERIES (TOPOGRAPHIC)



Mapped, edited, and published by the Geological Survey  
Control by USGS and NOS/NOAA  
Topography by photogrammetric methods from aerial photographs taken 1973. Field checked 1974  
Projection: Alabama coordinate system, west zone (transverse Mercator)  
10,000-foot grid ticks based on Alabama coordinate system, west zone and Mississippi coordinate system, east zone  
1000-meter Universal Transverse Mercator grid, zone 16  
1927 North American datum  
To place on the predicted North American Datum 1983 move the projection lines 12 meters south and 2 meters east as shown by dashed corner ticks  
Fine red dashed lines indicate selected fence and field lines where generally visible on aerial photographs. This information is unchecked



SCALE 1:24 000  
CONTOUR INTERVAL 10 FEET  
NATIONAL GEODETIC VERTICAL DATUM OF 1929  
THIS MAP COMPLIES WITH NATIONAL MAP ACCURACY STANDARDS  
FOR SALE BY U.S. GEOLOGICAL SURVEY  
DENVER, COLORADO 80225 OR RESTON, VIRGINIA 22092  
A FOLDER DESCRIBING TOPOGRAPHIC MAPS AND SYMBOLS IS AVAILABLE ON REQUEST

USGS HISTORICAL MAP  
SEP 20 1988  
REC'D FILE COPY



ROAD CLASSIFICATION  
Primary highway, hard surface  
Secondary highway, hard surface  
Light-duty road, hard or improved surface  
Unimproved road  
Interstate Route  
U.S. Route  
State Route

EMELLE, ALA. - MISS.  
32088-F3-TF-024

1974  
PHOTOREVISED 1987  
DMA 3349 III NE - SERIES V844