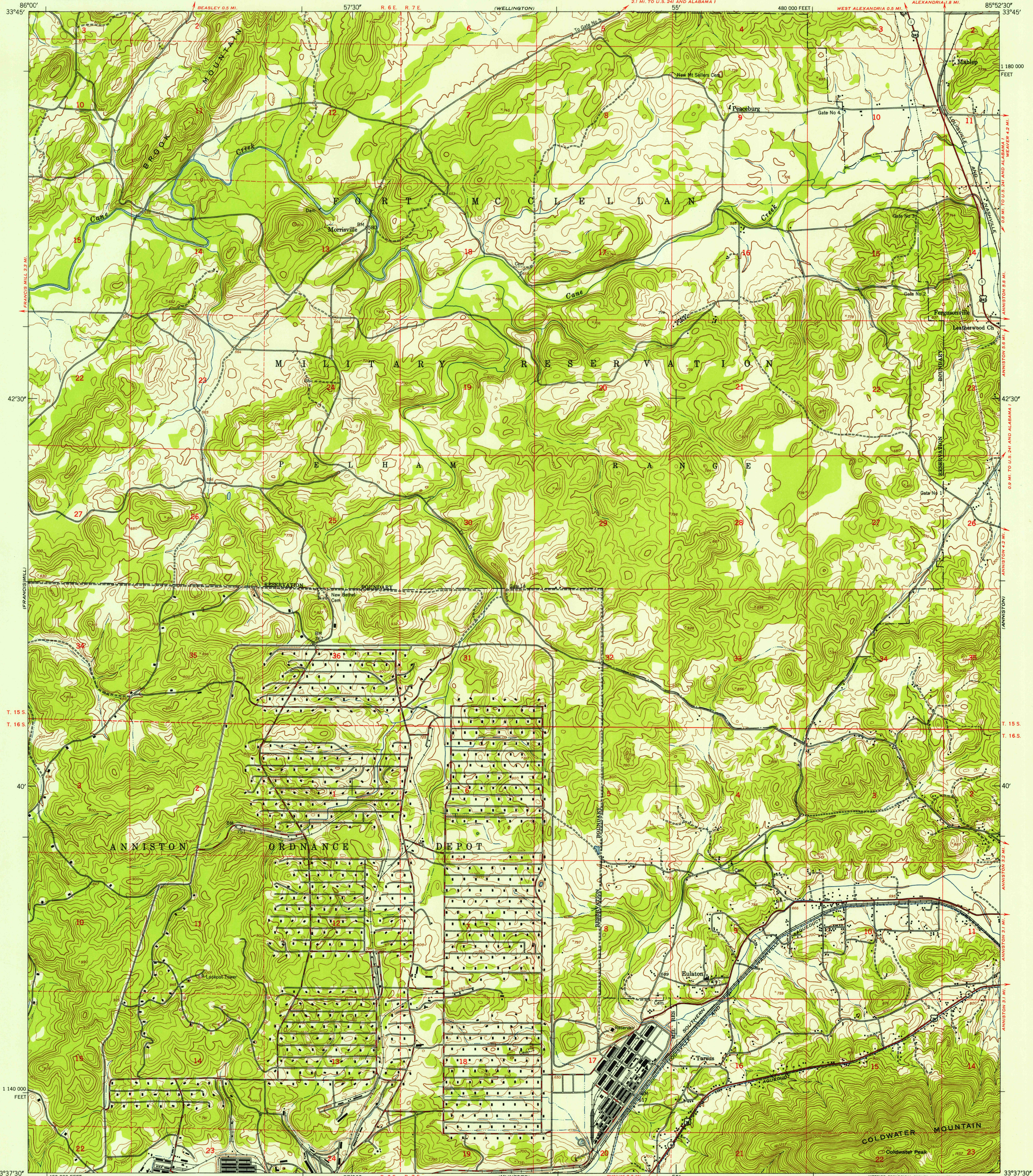
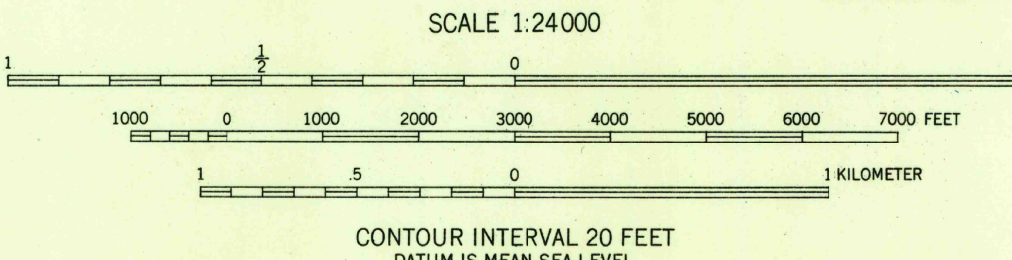


FILE COPY
Inspection and Editing



Mapped by the Army Map Service
Published for civil use by the Geological Survey
Control by USGS, USCG&S, and USCE
Topography from aerial photographs by multiplex methods
Aerial photographs taken 1946. Field check 1947
Polyconic projection. 1927 North American datum
10,000-foot grid based on Alabama coordinate system,
east zone
No distinction is made between barns, dwellings,
commercial and industrial buildings
Unchecked elevations are shown in brown
Dashed land lines indicate approximate locations

TRUE NORTH
MAGNETIC NORTH
APPROXIMATE MEAN
DECLINATION, 1947



USGS
Historical File
Topographic Division

ROAD CLASSIFICATION
Heavy-duty 4 LANE 16 LANE Light-duty
Medium-duty 4 LANE 16 LANE Unimproved dirt
U.S. Route State Route



EULATON, ALA.
NW/4 ANNISTON 15' QUADRANGLE
N3337.5-W8552.5/7.5 F8

FILE COPY
Inspection and Editing

THIS MAP COMPLIES WITH NATIONAL MAP ACCURACY STANDARDS
FOR SALE BY U. S. GEOLOGICAL SURVEY, WASHINGTON 25, D. C.
A FOLDER DESCRIBING TOPOGRAPHIC MAPS AND SYMBOLS IS AVAILABLE ON REQUEST

HISTORICAL

SEP 8 1953

2670