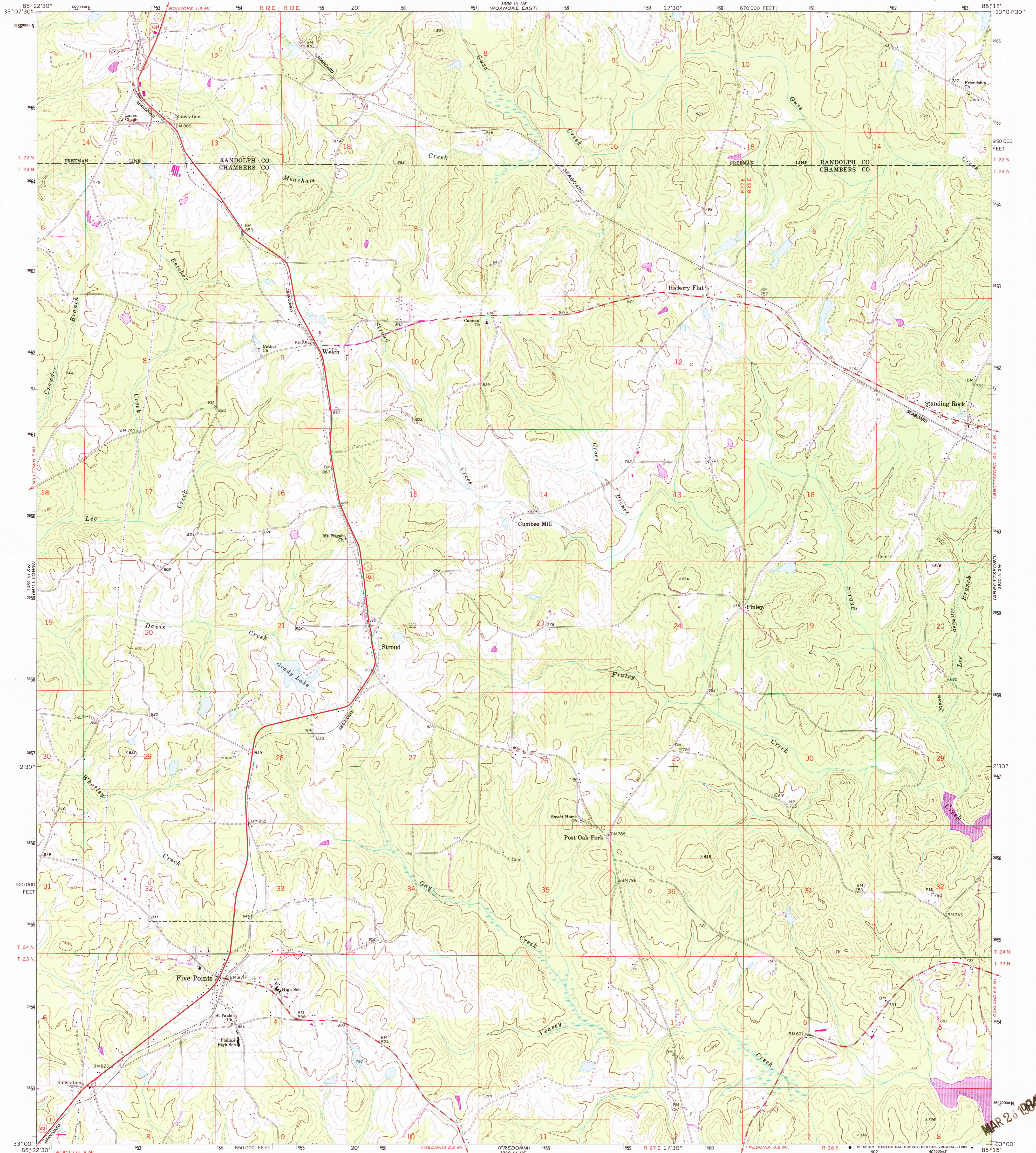
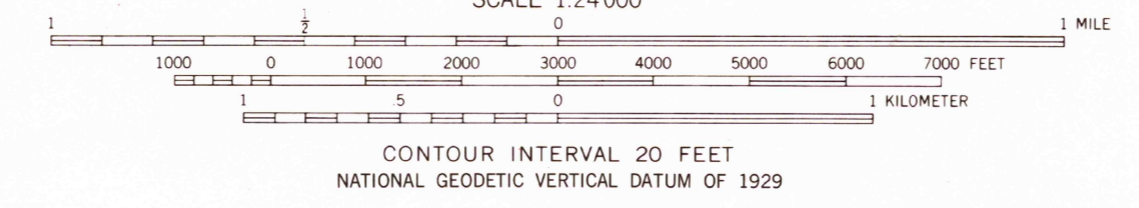
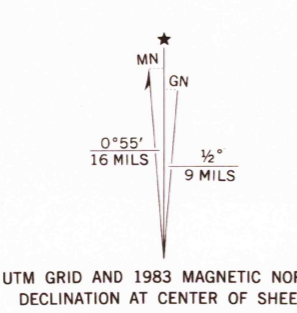


UNITED STATES
DEPARTMENT OF THE INTERIOR
GEOLOGICAL SURVEY

FIVE POINTS QUADRANGLE
ALABAMA
7.5 MINUTE SERIES (TOPOGRAPHIC)



Maped, edited, and published by the Geological Survey
Control by USGS, NOS/NOAA, and USCE
Topography by photogrammetric methods from aerial
photographs taken 1966. Field checked 1968
Polyconic projection. 10,000-foot grid ticks based on
Alabama coordinate system, east zone. 1000-meter Universal
Transverse Mercator grid ticks, zone 16, shown in blue
1927 North American Datum.
To place on the predicted North American Datum 1983
move the projection lines 11 meters south and 5 meters west
as shown by dashed corner ticks
Fine red dashed lines indicate selected fence and field lines where
generally visible on aerial photographs. This information is unchecked



ROAD CLASSIFICATION
Primary highway, hard surface
Secondary highway, hard surface
Light duty road, hard or improved surface
Unimproved road
Interstate Route
U. S. Route
State Route

RETURN TO:
USGS NATIONAL CENTER, MS-522 RESTON, VA 22092
FIVE POINTS, ALA.
33085-A3-TF-024

THIS MAP COMPLIES WITH NATIONAL MAP ACCURACY STANDARDS
FOR SALE BY U. S. GEOLOGICAL SURVEY, RESTON, VIRGINIA 22092
A FOLDER DESCRIBING TOPOGRAPHIC MAPS AND SYMBOLS IS AVAILABLE ON REQUEST

Revisions shown in purple and woodland compiled from
aerial photographs taken 1983 and other sources
This information not field checked. Map edited 1983

1968
PHOTOREVISED 1983
DMA 3950 III SE-SERIES V844

MAR 20 1984