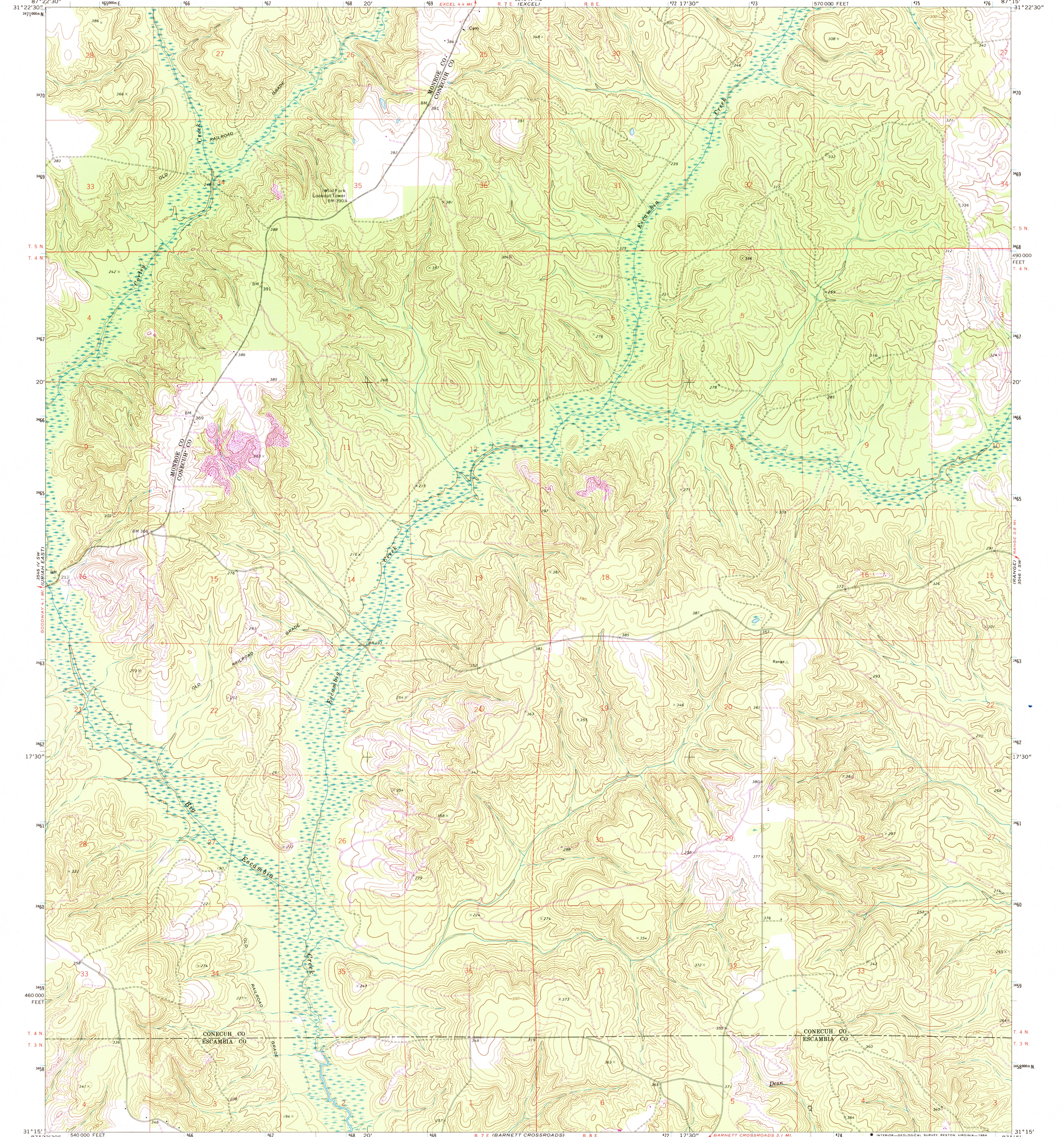


3546 IV SE
FRISCO CITY

UNITED STATES
DEPARTMENT OF THE INTERIOR
GEOLOGICAL SURVEY

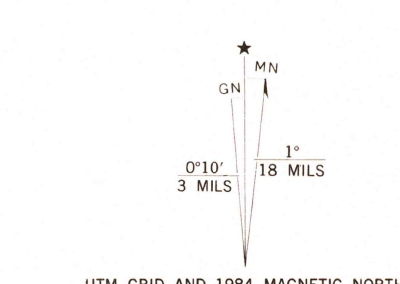
FRISCO CITY SE QUADRANGLE
ALABAMA
7.5 MINUTE SERIES (TOPOGRAPHIC)

3546 NW
REFTON

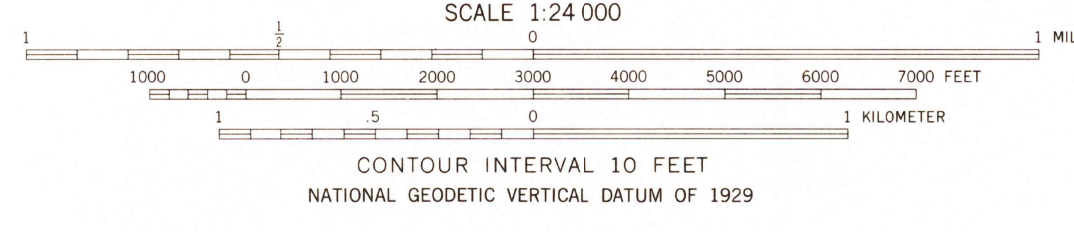


3546 IV SW
3546 III NW

Mapped, edited, and published by the Geological Survey
Control by USGS and NOS/NOAA
Topography by photogrammetric methods from aerial photographs taken 1971. Field checked 1972
Projection and 10,000-foot grid ticks: Alabama coordinate system, west zone (transverse Mercator)
1000-meter Universal Transverse Mercator grid ticks, zone 16, shown in blue
1927 North American Datum
To place on the predicted North American Datum 1983 move the projection lines 15 meters south and 2 meters west as shown by dashed corner ticks
Fine red dashed lines indicate selected fence and field lines where generally visible on aerial photographs. This information is unchecked



Revisions shown in purple and woodland compiled from aerial photographs taken 1981 and other sources
This information not field checked. Map edited 1984



THIS MAP COMPLIES WITH NATIONAL MAP ACCURACY STANDARDS
FOR SALE BY U. S. GEOLOGICAL SURVEY
DENVER, COLORADO 80225, OR RESTON, VIRGINIA 22092
A FOLDER DESCRIBING TOPOGRAPHIC MAPS AND SYMBOLS IS AVAILABLE ON REQUEST



AUG 1991

05 AUG 1991
RETURN TO:
NMD HISTORICAL MAP ARCHIVES
USGS NATIONAL CENTER, MS-522
RESTON, VA 22092

ROAD CLASSIFICATION

Primary highway, hard surface	Light-duty road, hard or improved surface
Secondary highway, hard surface	Unimproved road
Interstate Route	U. S. Route
	State Route

FRISCO CITY SE, ALA.
31087-C3-TF-024

1972
PHOTOREVISED 1984
DMA 3546 IV SE - SERIES V844

3546 III NW
3546 I NW