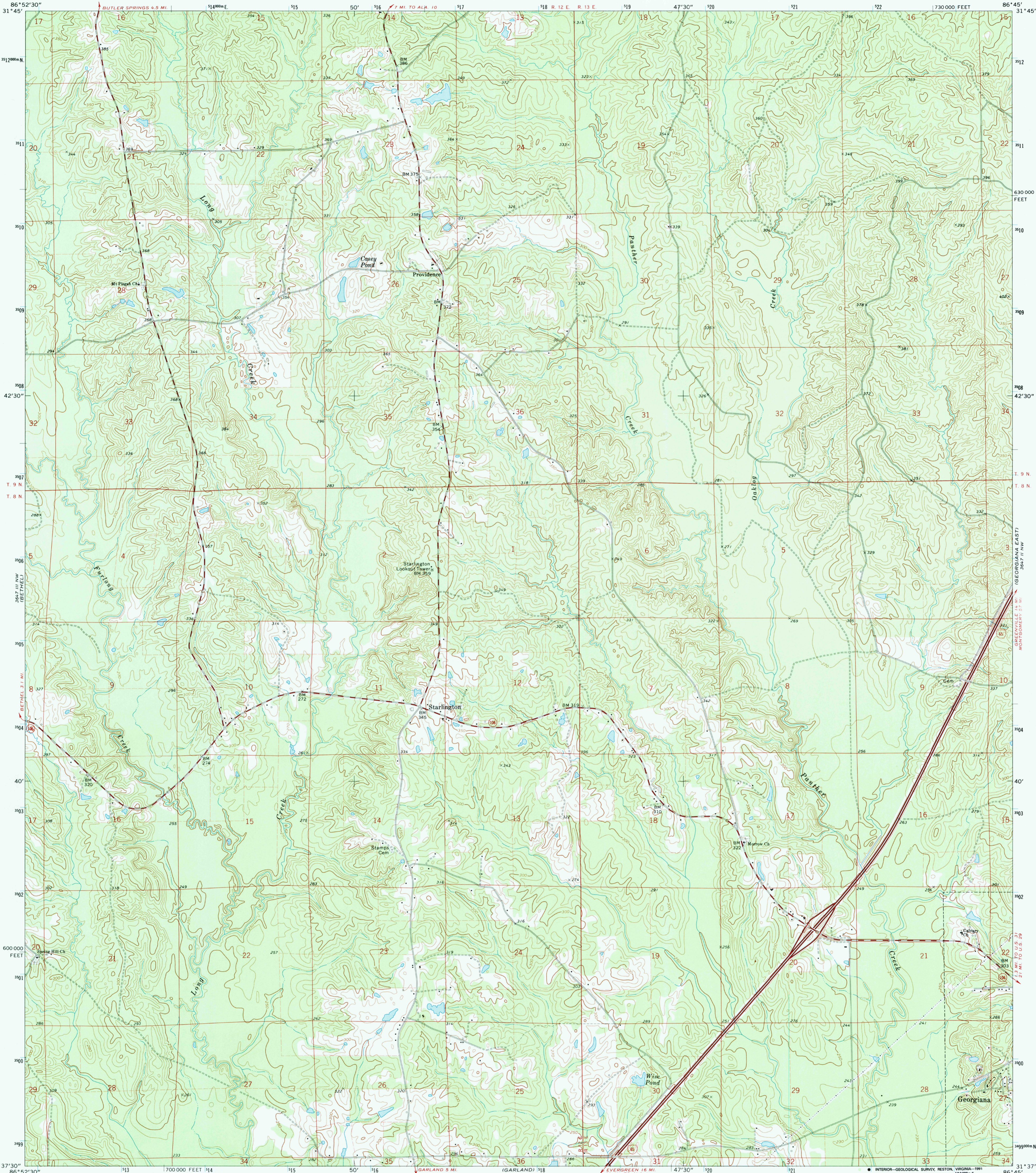


UNITED STATES
DEPARTMENT OF THE INTERIOR
GEOLOGICAL SURVEY

GEORGIANA WEST QUADRANGLE
ALABAMA—BUTLER CO.
7.5 MINUTE SERIES (TOPOGRAPHIC)



Mapped, edited, and published by the Geological Survey

Control by USGS and USC&GS

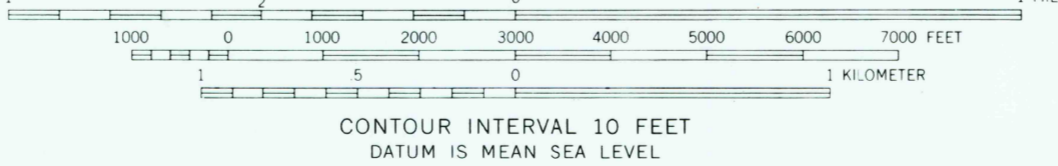
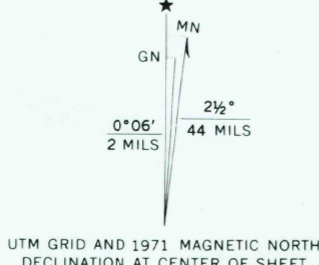
Topography by photogrammetric methods from aerial photographs taken 1971. Field checked 1971

Projection and 10,000-foot grid ticks: Alabama coordinate system, west zone (transverse Mercator)

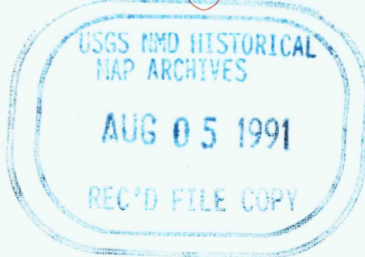
1000-meter Universal Transverse Mercator grid ticks, zone 16, shown in blue. 1927 North American datum

Fine red dashed lines indicate selected fence and field lines where generally visible on aerial photographs. This information is unchecked

Map photoinspected 1981
No major culture or drainage changes observed



ROAD CLASSIFICATION	
Primary highway, hard surface	Light-duty road, hard or improved surface
Secondary highway, hard surface	Unimproved road
Interstate Route	U. S. Route
	State Route



GEORGIANA WEST, ALA.
N3137.5—W8645/7.5

1971
PHOTOINSPECTED 1981
AMS 3647 III NE—SERIES V844

THIS MAP COMPLIES WITH NATIONAL MAP ACCURACY STANDARDS
FOR SALE BY U. S. GEOLOGICAL SURVEY
DENVER, COLORADO 80225, OR RESTON, VIRGINIA 22092
A FOLDER DESCRIBING TOPOGRAPHIC MAPS AND SYMBOLS IS AVAILABLE ON REQUEST