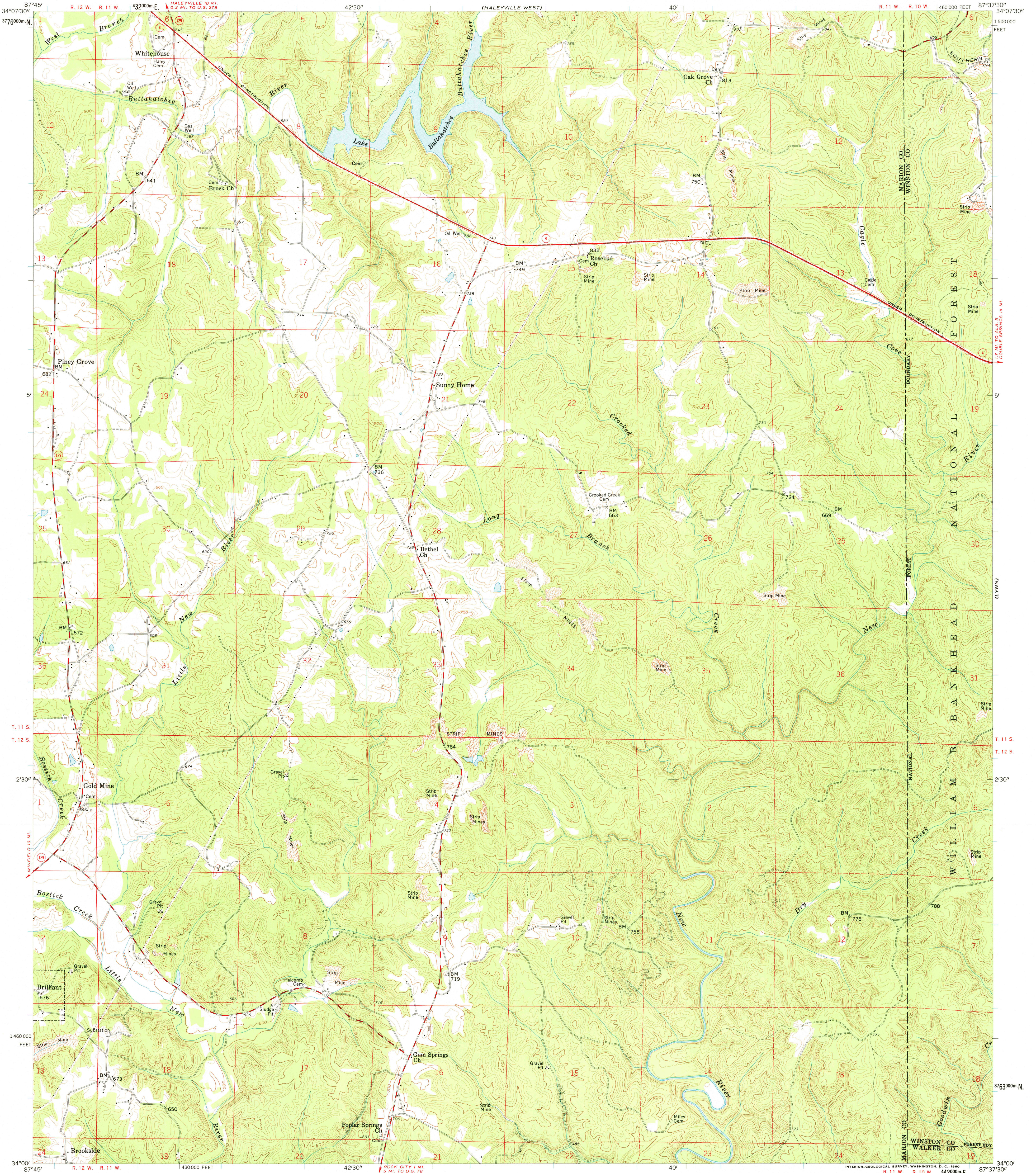
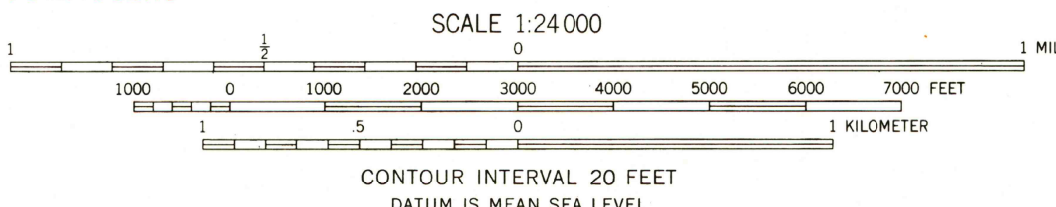


HALEYVILLE  
EAST



Mapped, edited, and published by the Geological Survey  
Control by USGS and USC&GS  
Topography from aerial photographs by photogrammetric methods  
Aerial photographs taken 1947-1948. Field check 1958  
Polyconic projection. 1927 North American datum  
10,000-foot grid based on Alabama coordinate system,  
west zone  
1000-meter Universal Transverse Mercator grid ticks,  
zone 16, shown in blue  
Dashed land lines indicate approximate locations

TRUE NORTH  
MAGNETIC NORTH  
APPROXIMATE MEAN  
DECLINATION, 1958



ROAD CLASSIFICATION  
Heavy-duty ——— Light-duty ———  
Medium-duty ——— Unimproved dirt - - - - -  
State Route ○

USGS  
Historical File  
Topographic Division

JUN 25 1974 1610  
GOLD MINE, ALA. 26  
N 3400-W 8737.5/7.5  
1958  
JUNE 16, 1960

THIS MAP COMPLIES WITH NATIONAL MAP ACCURACY STANDARDS  
FOR SALE BY U. S. GEOLOGICAL SURVEY, WASHINGTON 25, D. C.  
A FOLDER DESCRIBING TOPOGRAPHIC MAPS AND SYMBOLS IS AVAILABLE ON REQUEST