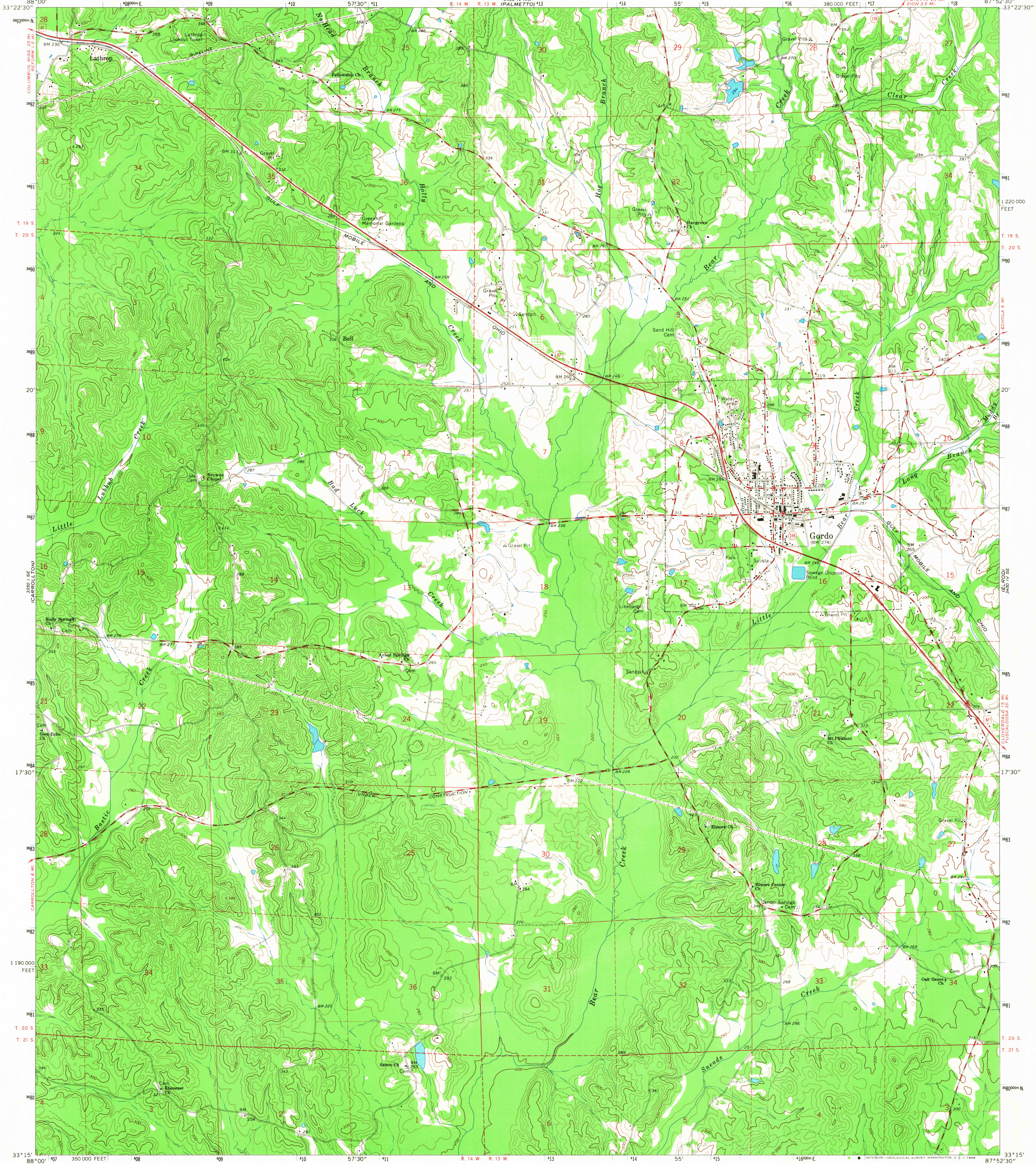


33°22'30" N  
88°00' W  
COLUMBIA 26 MI.  
W. OF  
LATHROP 2.5 MI.

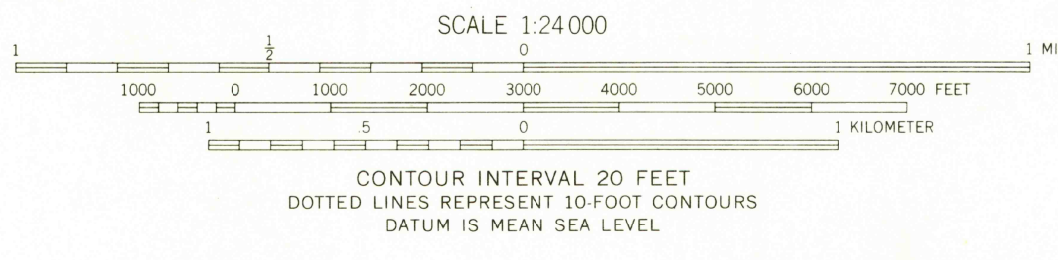
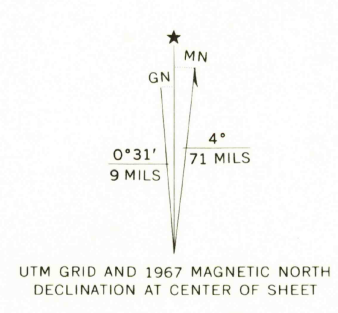
UNITED STATES  
DEPARTMENT OF THE INTERIOR  
GEOLOGICAL SURVEY

GORDO QUADRANGLE  
ALABAMA-PICKENS CO.  
7.5 MINUTE SERIES (TOPOGRAPHIC)

33°22'30" N  
87°52'30" W  
3450 IV SW  
(BROWNVILLE)



Mapped, edited, and published by the Geological Survey  
Control by USGS and USC&GS  
Topography by photogrammetric methods from aerial  
photographs taken 1966. Field checked 1967  
Polyconic projection. 1927 North American datum  
10,000-foot grid based on Alabama coordinate system, west zone  
1000-meter Universal Transverse Mercator grid ticks,  
zone 16, shown in blue  
Fine red dashed lines indicate selected fence and field lines where  
generally visible on aerial photographs. This information is unchecked



CONTOUR INTERVAL 20 FEET  
DOTTED LINES REPRESENT 10-FOOT CONTOURS  
DATUM IS MEAN SEA LEVEL



ROAD CLASSIFICATION  
Heavy-duty ——— Light-duty ———  
Medium-duty ——— Unimproved dirt ———  
U.S. Route State Route  
USGS  
Historical  
2845  
GORDO, ALA.  
N3315-W8752.5/7.5  
1967  
AMS 3450 IV SW-SERIES V847

THIS MAP COMPLIES WITH NATIONAL MAP ACCURACY STANDARDS  
FOR SALE BY U. S. GEOLOGICAL SURVEY, WASHINGTON, D. C. 20242  
A FOLDER DESCRIBING TOPOGRAPHIC MAPS AND SYMBOLS IS AVAILABLE ON REQUEST

U.S.G.S.  
FM'S COPY  
TOPOGRAPHIC DIVISION  
HISTORICAL

JUL 3 1968