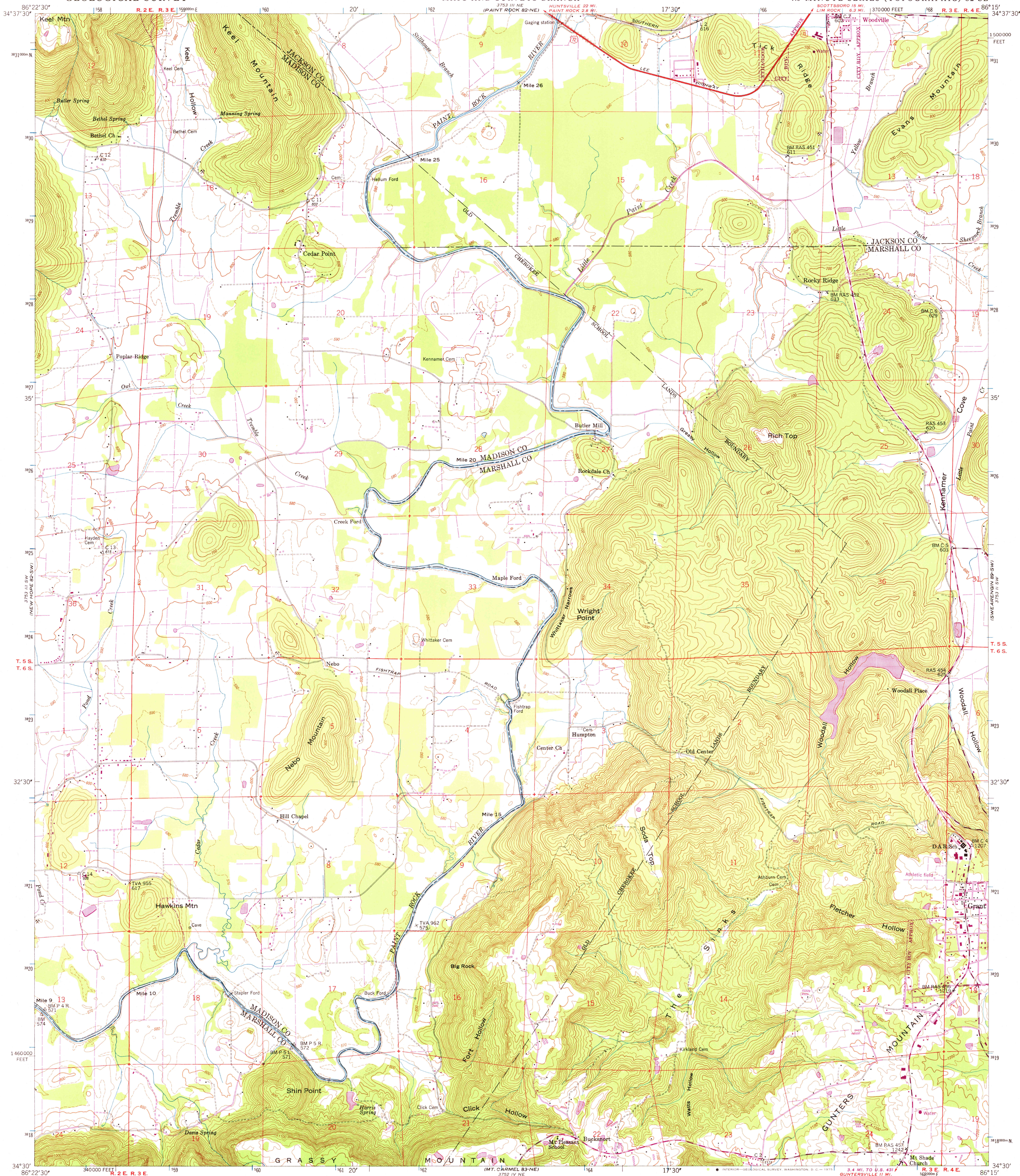


UNITED STATES
DEPARTMENT OF THE INTERIOR
GEOLOGICAL SURVEY

UNITED STATES
TENNESSEE VALLEY AUTHORITY
MAPS AND SURVEYS BRANCH

GRANT QUADRANGLE
ALABAMA
7.5 MINUTE SERIES (TOPOGRAPHIC) 82-SE



Mapped and edited by Tennessee Valley Authority
Published by the Geological Survey

Control by USGS, USGS, and TVA

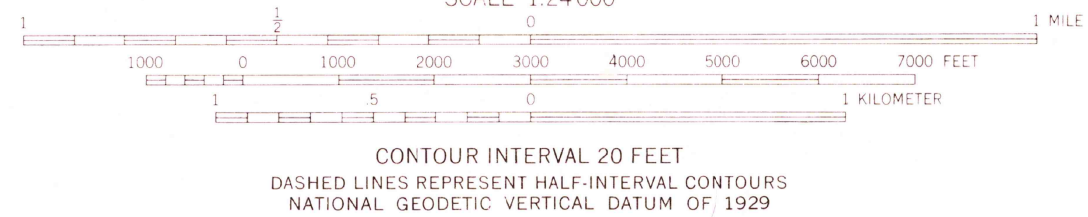
Topography by USGS and TVA by photogrammetric and planimetric
methods using aerial photographs taken 1946.
Map field checked by TVA, 1947

Polyconic projection. 1927 North American datum
10,000-foot grid based on Alabama (East)
rectangular coordinate system
1000 meter Universal Transverse Mercator Grid ticks,
Zone 16, shown in blue

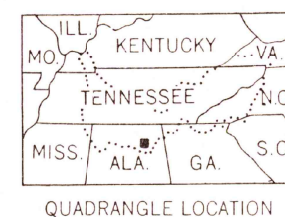
Revisions shown in purple and recompilation
of woodland areas compiled by the Tennessee
Valley Authority from aerial photographs taken
1973. This information not field checked

Fine purple dashed lines indicate selected
fence and field lines visible on aerial photo-
graphy. This information is unchecked

UTM GRID AND 1973 MAGNETIC NORTH
DECLINATION AT CENTER OF SHEET



THIS MAP COMPLIES WITH NATIONAL MAP ACCURACY STANDARDS
FOR SALE BY U.S. GEOLOGICAL SURVEY, WASHINGTON, D.C. 20242,
AND BY U.S. TENNESSEE VALLEY AUTHORITY, CHATTANOOGA, TENN. 37401 OR KNOXVILLE, TENN. 37902
A FOLDER DESCRIBING TOPOGRAPHIC MAPS AND SYMBOLS IS AVAILABLE ON REQUEST



QUADRANGLE LOCATION

ROAD CLASSIFICATION
Heavy-duty Poor motor road
Medium-duty Wagon and jeep track
Light-duty Foot trail
U. S. Route State Route
In developed areas, only through roads are classified

USGS
Historical File
Topographic Division

GRANT, ALA.
N4330-W8615/7.5

1947
PHOTOREVISED 1973
AMS 3753 III SE-SERIES W844

JAN 24 1975

2960