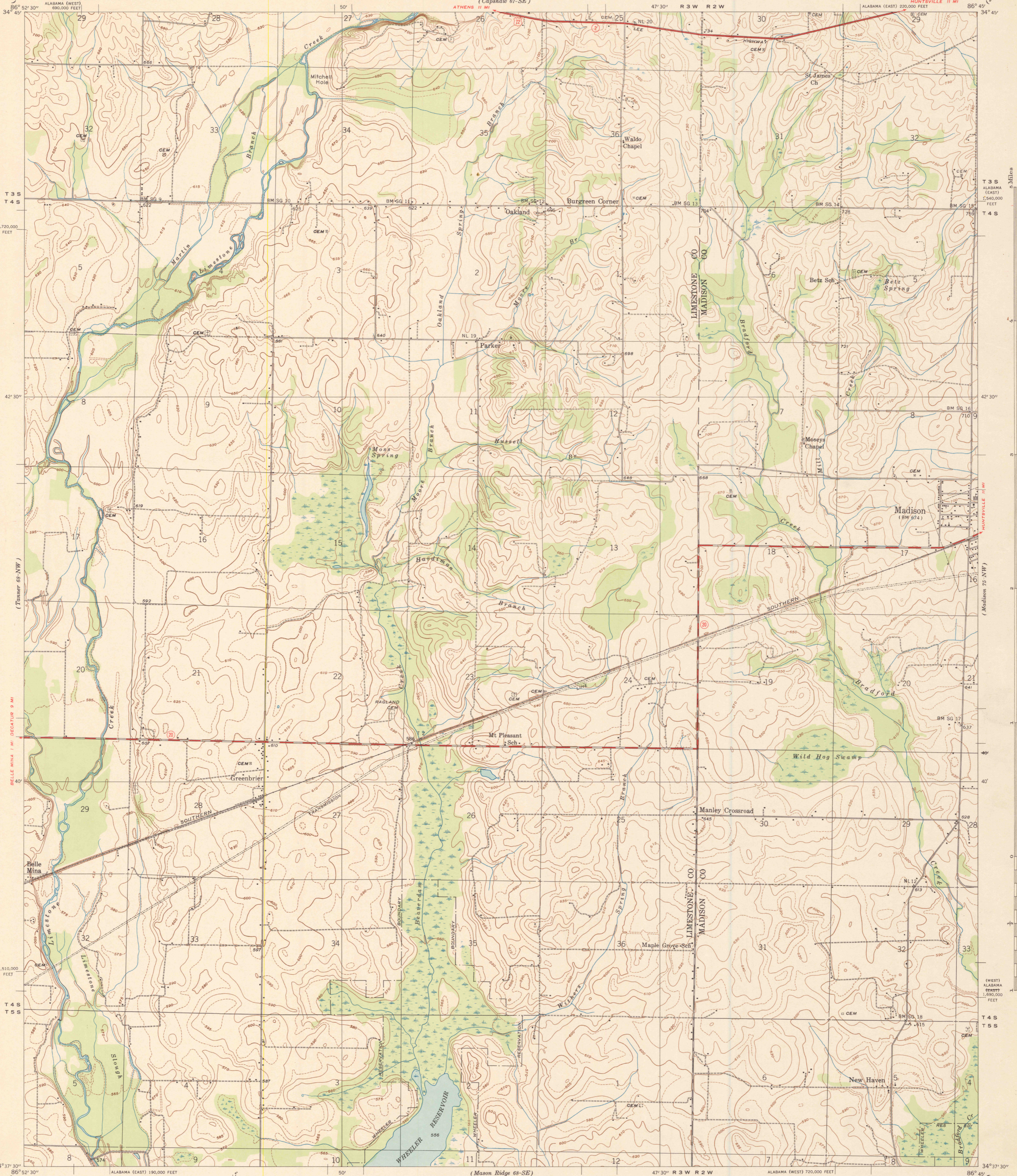


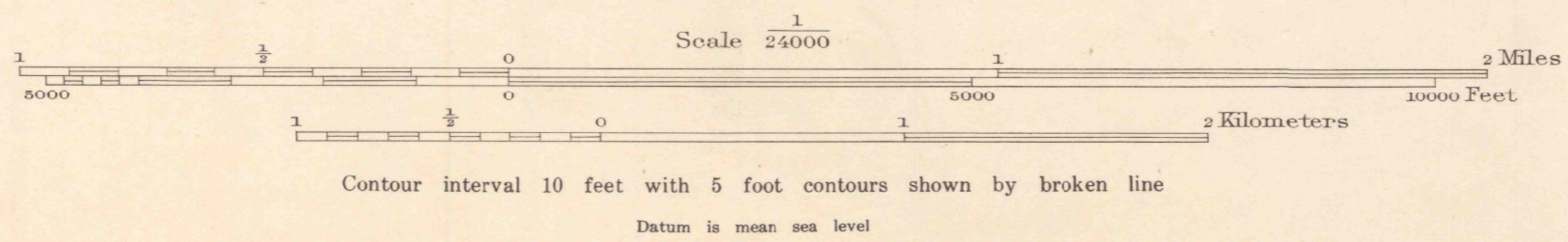
UNITED STATES  
TENNESSEE VALLEY AUTHORITY  
MAPS AND SURVEYS DIVISION

ALABAMA  
GREENBRIER QUADRANGLE  
68-NE



Control by USC&GS, USGS, and TVA.  
Topography by planetable by TVA.  
Culture, drainage, and woodland in part compiled  
from aerial photographs - 1938.  
Office inspection and review by the Geological Survey.  
Maps distributed by the Geological Survey.

APPROXIMATE MEAN  
DECLINATION, 1938



Polyconic projection. 1927 North American datum  
10,000 foot grid based on Alabama (West) and  
Alabama (East) rectangular coordinate system  
HARD IMPERVIOUSLY SURFACED ROADS  
OTHER MAIN TRAVELED ROADS  
U.S. HIGHWAY NUMBER STATE HIGHWAY NUMBER

GREENBRIER, ALA.  
68-NE  
Edition of 1938  
2632-2225-49  
ENGRAVED AND PRINTED BY WILLIAMS & HEINTZ CO. WASH., D. C.



FILE COPY  
Map Information Office