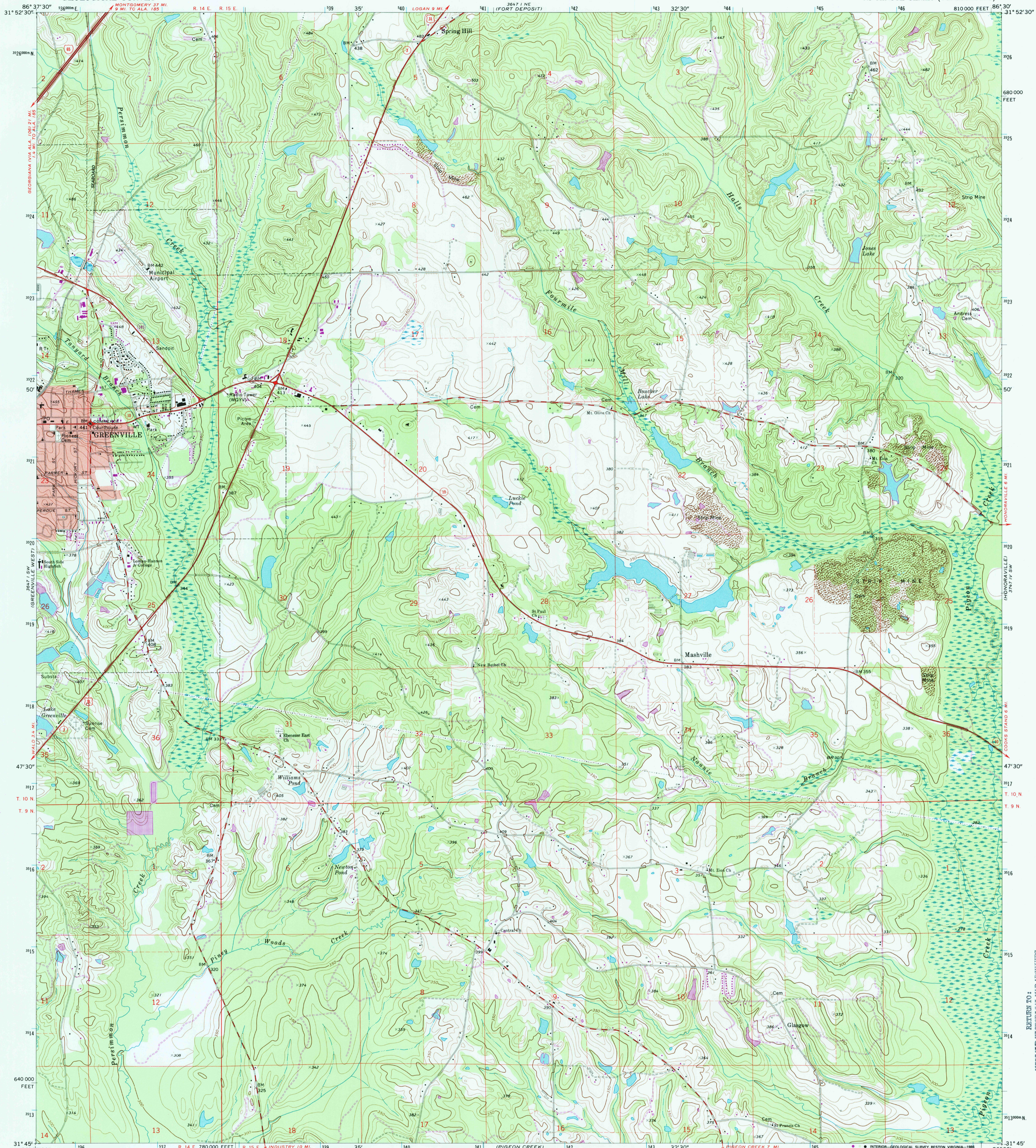
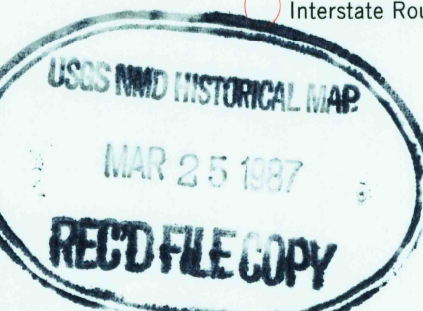
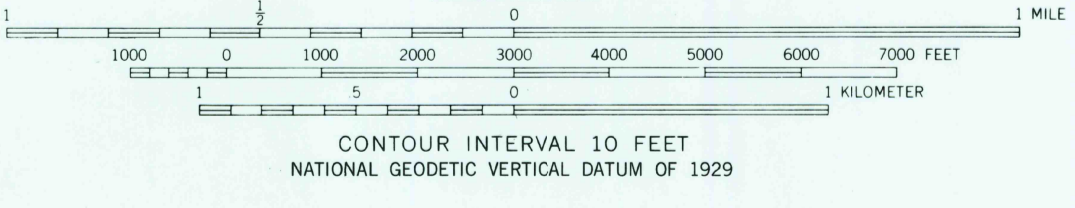
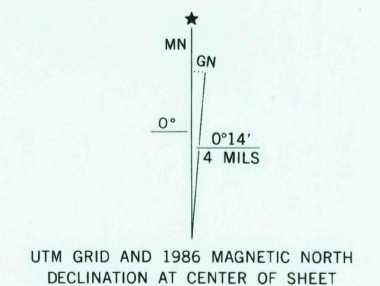


UNITED STATES
DEPARTMENT OF THE INTERIOR
GEOLOGICAL SURVEY

GREENVILLE EAST QUADRANGLE
ALABAMA—BUTLER CO.
7.5 MINUTE SERIES (TOPOGRAPHIC)



Mapped, edited, and published by the Geological Survey
Control by USGS, NOS/NOAA, and USCE
Topography by photogrammetric methods from aerial
photographs taken 1968. Field checked 1971
Polyconic projection, 10,000-foot grid ticks based on Alabama
coordinate system, west zone
1000-meter Universal Transverse Mercator grid ticks,
zone 16, shown in blue
1927 North American Datum
To place on the predicted North American Datum 1983
move the projection lines 14 meters south and
3 meters west as shown by dashed corner ticks
Fine red dashed lines indicate selected fence and field lines where
generally visible on aerial photographs. This information is unchecked
Red tint indicates area in which only landmark buildings are shown
Revisions shown in purple and woodland compiled from
aerial photographs taken 1984 and other sources. This
information not field checked. Map edited 1986



ROAD CLASSIFICATION

Primary highway, hard surface	Light-duty road, hard or improved surface
Secondary highway, hard surface	Unimproved road
Interstate Route	U.S. Route
State Route	

THIS MAP COMPLIES WITH NATIONAL MAP ACCURACY STANDARDS
FOR SALE BY U.S. GEOLOGICAL SURVEY, RESTON, VIRGINIA 22092
A FOLDER DESCRIBING TOPOGRAPHIC MAPS AND SYMBOLS IS AVAILABLE ON REQUEST

GREENVILLE EAST, ALA.
31086-G5-TF-024

1971
PHOTOREVISED 1986
DMA 3647 1 SE—SERIES V844

3647 1 NW (FORT DALE)
3647 1 NE (FORT DEPOSIT)
3647 1 SE (PIGEON CREEK)
3647 1 SW (GREENVILLE WEST)
3647 1 W (WALD)
3647 1 E (INDUSTRY)
3647 1 S (MASHVILLE)
3647 1 N (MASHVILLE)
3647 1 NE (MASHVILLE)
3647 1 SE (MASHVILLE)
3647 1 SW (MASHVILLE)
3647 1 W (MASHVILLE)
3647 1 E (MASHVILLE)
3647 1 S (MASHVILLE)
3647 1 N (MASHVILLE)

3647 1 NW (DANIELSVILLE)
3647 1 NE (DANIELSVILLE)
3647 1 SE (DANIELSVILLE)
3647 1 SW (DANIELSVILLE)
3647 1 W (DANIELSVILLE)
3647 1 E (DANIELSVILLE)
3647 1 S (DANIELSVILLE)
3647 1 N (DANIELSVILLE)