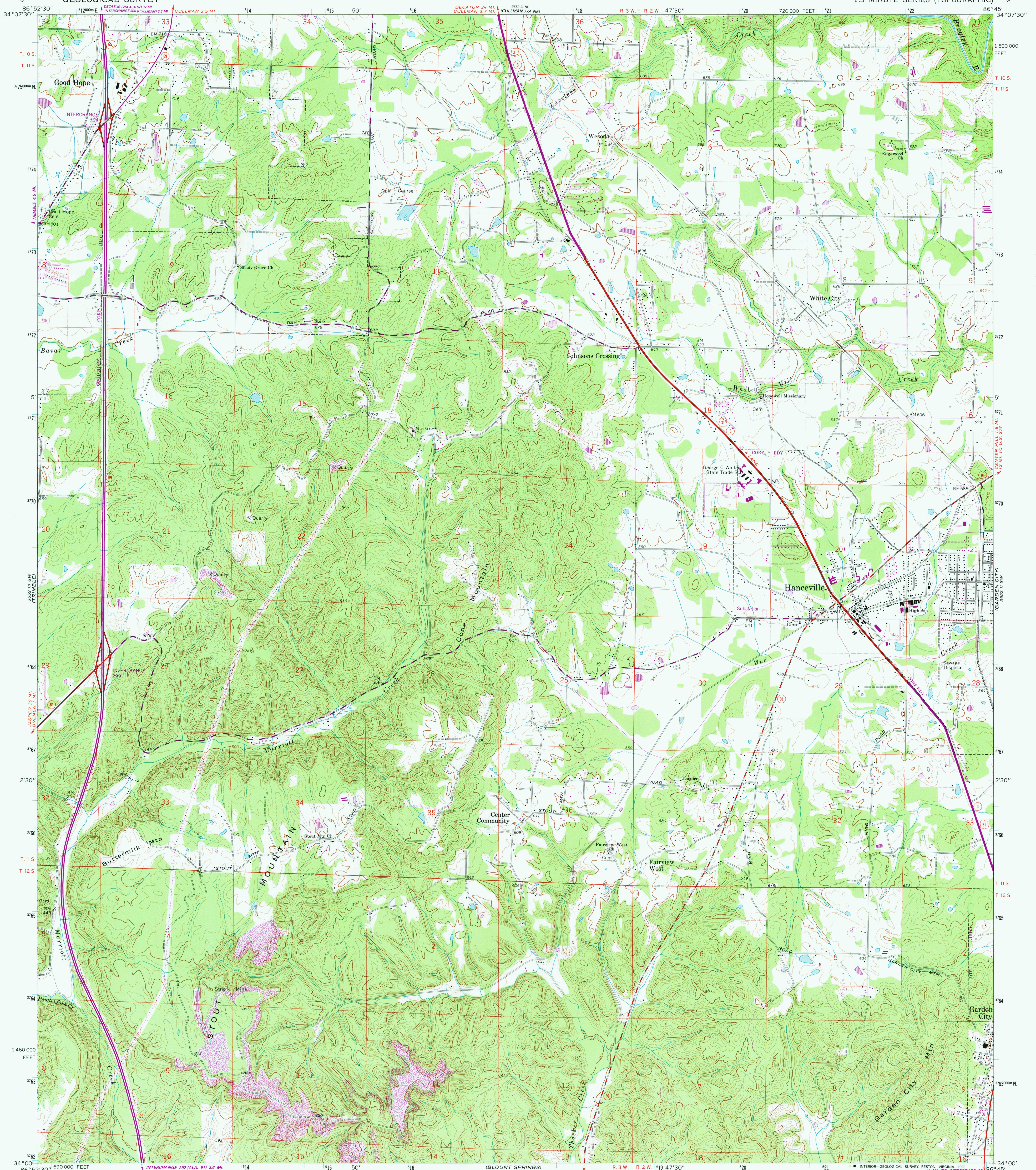


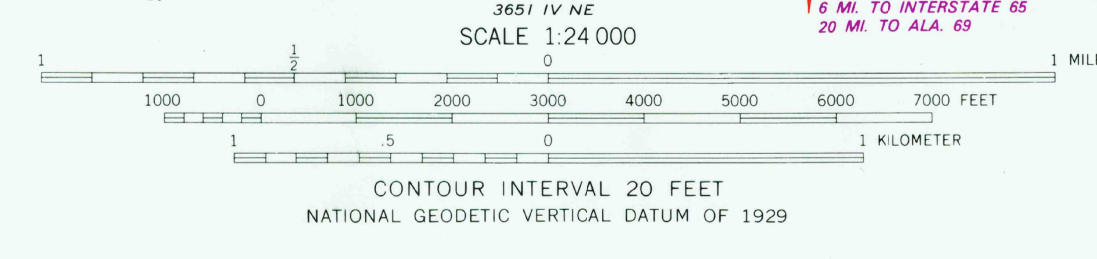
UNITED STATES  
DEPARTMENT OF THE INTERIOR  
GEOLOGICAL SURVEY

HANCEVILLE QUADRANGLE  
ALABAMA—CULLMAN CO.  
7.5 MINUTE SERIES (TOPOGRAPHIC)



Produced by the United States Geological Survey  
Control by USGS and NOS/NOAA  
Topography by photogrammetric methods from aerial photographs taken 1966-67. Field checked by 1969  
Projection and 10,000-foot grid ticks: Alabama coordinate system, west zone (transverse Mercator)  
1000 meter Universal Transverse Mercator grid ticks, zone 16, shown in blue  
1927 North American Datum (NAD 27)  
North American Datum of 1983 (NAD 83) is shown by dashed corner ticks  
The values of the shift between NAD 27 and NAD 83 for 7.5-minute intersections are given in USGS Bulletin 1875  
Fine red dashed lines indicate selected fence and field lines where generally visible on aerial photographs. This information is un-checked  
Photinspected from 1990 source, no major culture or drainage changes observed. Boundaries revised and names verified 1993

Revisions shown in purple and woodland compiled by the Tennessee Valley Authority from aerial photographs taken 1981 and other sources. This information not field checked. Map edited 1986



ROAD CLASSIFICATION

Primary highway, all weather, hard surface	Light-duty road, all weather, improved surface
Secondary highway, all weather, hard surface	Unimproved road, fair or dry weather
Interstate Route	U. S. Route
	State Route

USGS AND HISTORICAL MAP ARCHIVES  
AUG 17 1995  
REC'D FILE COPY

HANCEVILLE, ALA.  
34086-A7-TF-024

1969  
PHOTOREVISED 1986  
MINOR REVISION 1993

THIS MAP COMPLIES WITH NATIONAL MAP ACCURACY STANDARDS  
FOR SALE BY U.S. GEOLOGICAL SURVEY, DENVER, COLORADO 80225, OR RESTON, VIRGINIA 22092  
A FOLDER DESCRIBING TOPOGRAPHIC MAPS AND SYMBOLS IS AVAILABLE ON REQUEST