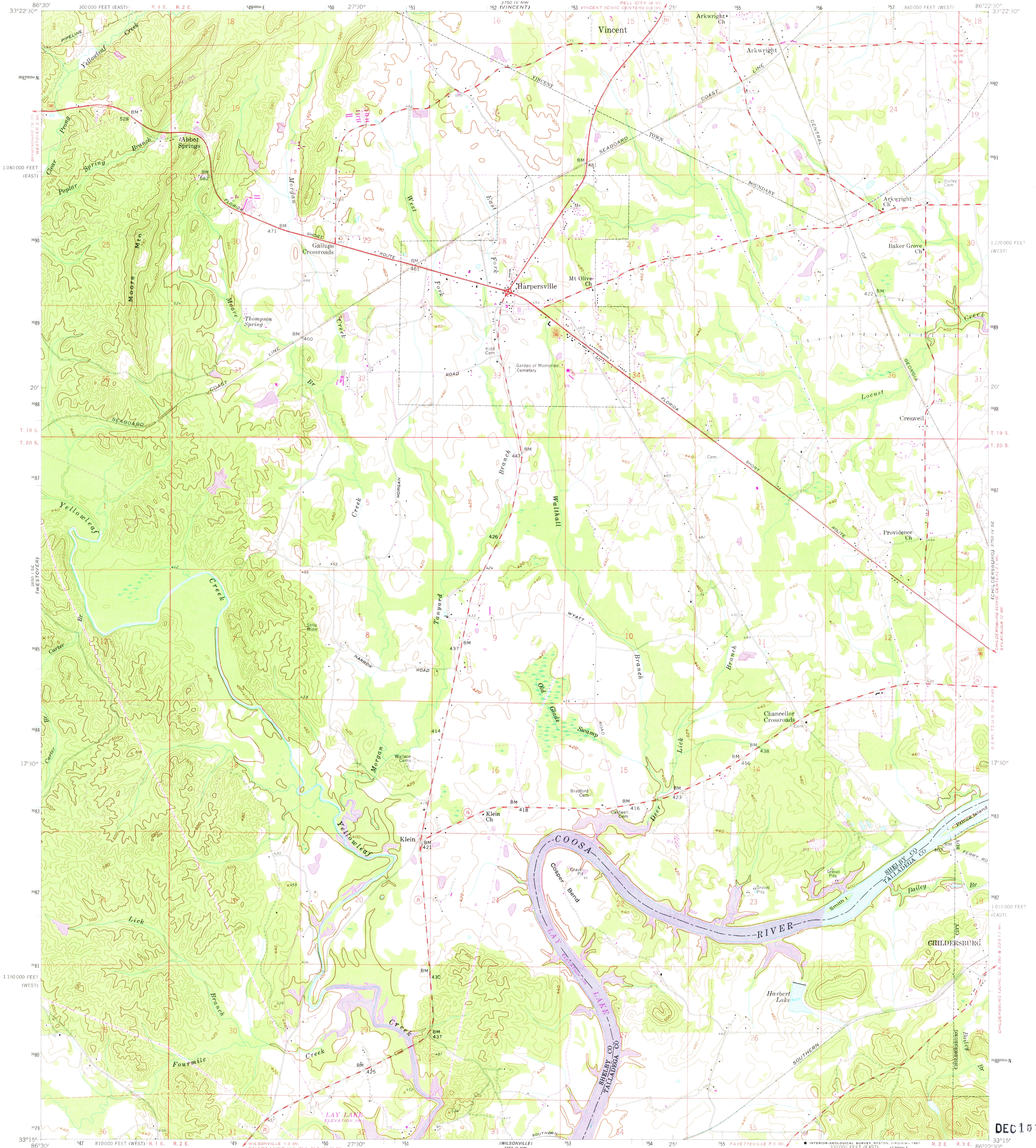


33°22'30" N

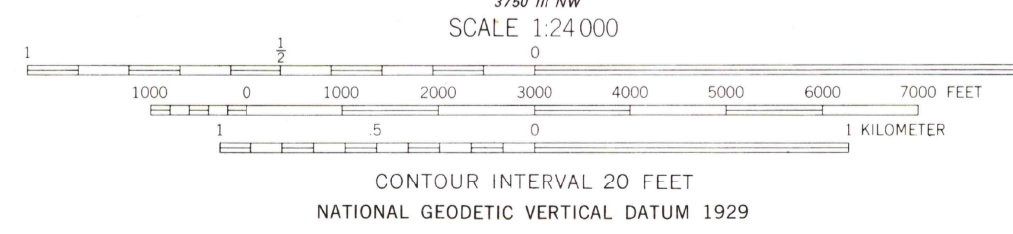
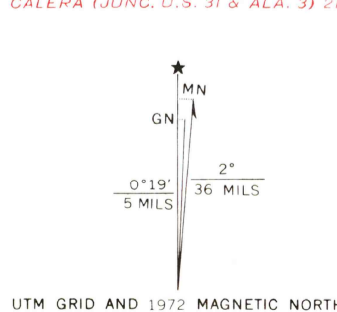
UNITED STATES
DEPARTMENT OF THE INTERIOR
GEOLOGICAL SURVEY

HARPERSVILLE QUADRANGLE
ALABAMA
7.5 MINUTE SERIES (TOPOGRAPHIC)

33°22'30" N



Mapped, edited, and published by the Geological Survey
Control by USGS, USC&GS, USCE, and Alabama Geodetic Survey
Topography by photogrammetric methods from aerial photographs
taken 1947. Field checked 1958
Polyconic projection. 10,000-foot grid ticks based on Alabama
coordinate system, west and east zones. 1000-meter Universal
Transverse Mercator grid ticks, zone 16, shown in blue. 1927
North American Datum. To place on the predicted North
American Datum 1983 move the projection lines 10 meters south
and 2 meters west as shown by dashed corner ticks
Dashed land lines indicate approximate locations
Unchecked elevations are shown in brown
Revisions shown in purple compiled from aerial photographs
taken 1972. This information not field checked



ROAD CLASSIFICATION

Heavy-duty	Light-duty
Medium-duty	Unimproved dirt
U.S. Route	State Route

HARPERSVILLE, ALA.
N 3315 - W 8622.5/7.5

1958
PHOTOREVISED 1972
AMS 3750 IV SW - SERIES V844

DEC 15 1961

33°22'30" N

2075