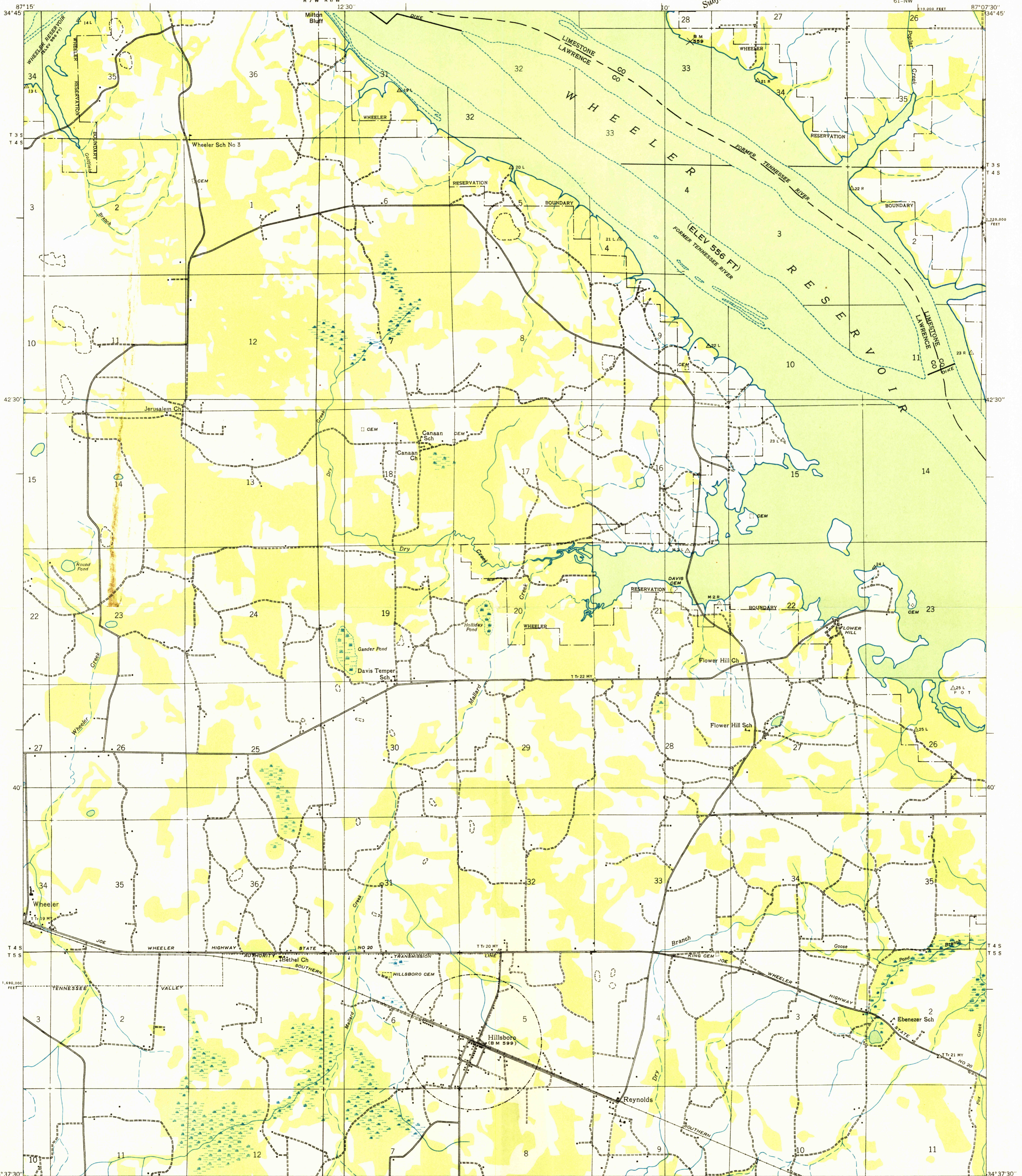
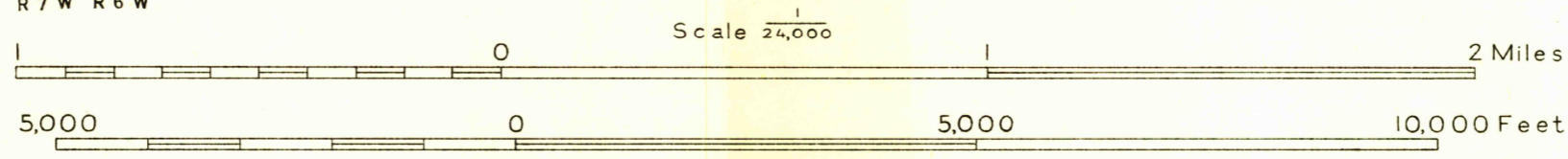


Advance sheet
Subject to correction



Albert Pike, Division Engineer
Compiled by U. S. Geological Survey from aerial photographs
Control by U. S. Geological Survey, U. S. Coast and Geodetic Survey and
Tennessee Valley Authority
Reservoir outline from surveys by the Tennessee Valley Authority
Field examination in 1936



Datum is mean sea level

TRUE NORTH
MAGNETIC NORTH
APPROXIMATE MEAN
DECLINATION, 1936

Polyconic projection. 1927 North American datum
10,000 foot grid based on Alabama (West)
rectangular coordinate system

Sinks
Probable drainage

USGS
Historical File
Topographic Division

7 1/2' HILLSBORO, ALA.
61-NW

HISTORICAL