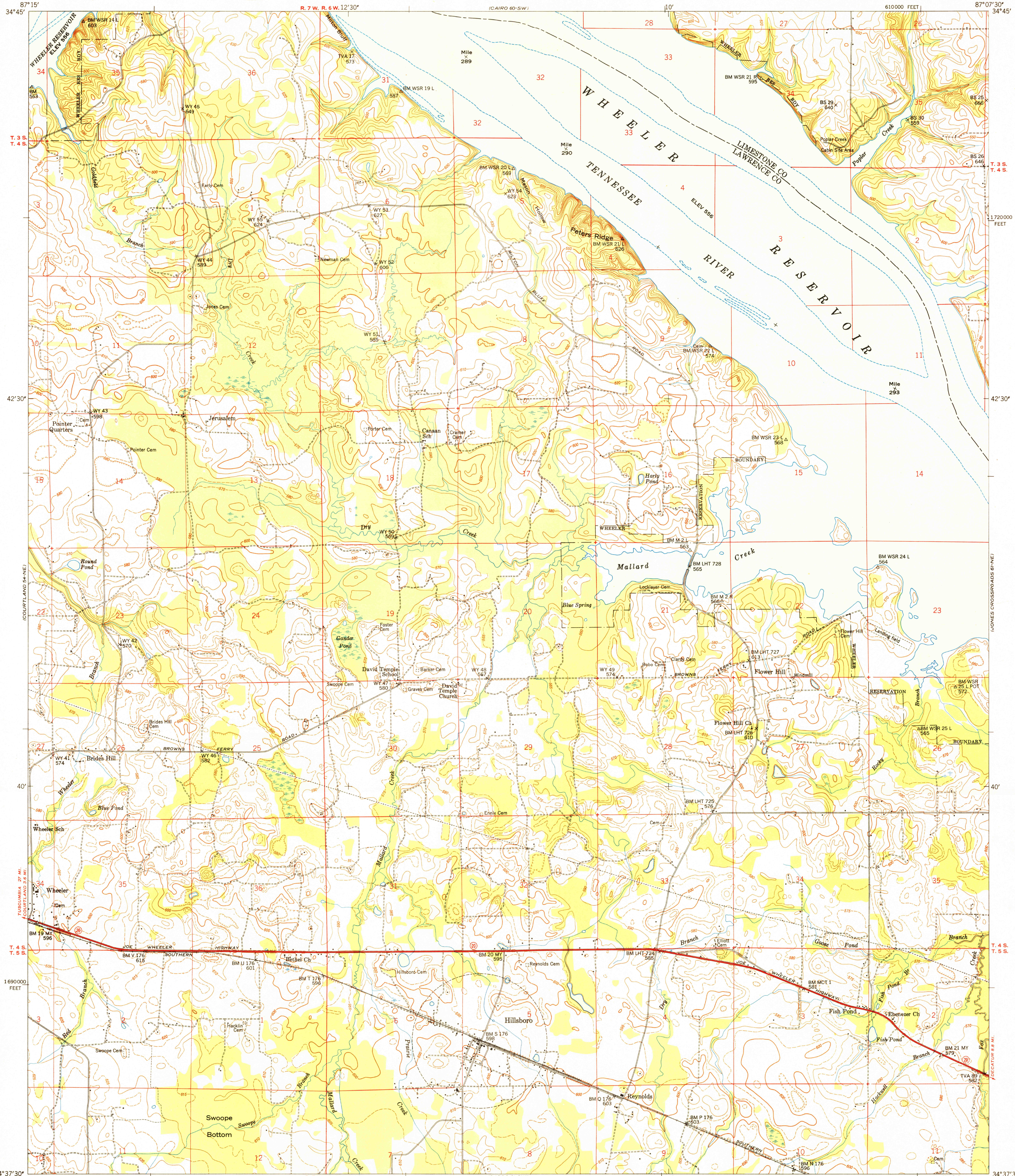


U.S.G.S.
FILE COPY
Inspection and Printing

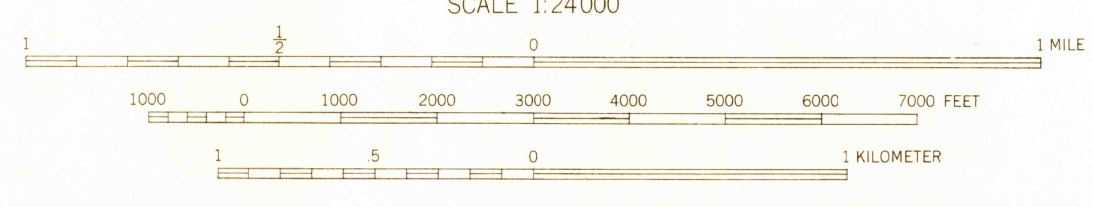


Mapped and edited by Tennessee Valley Authority
Published by the Geological Survey

Control by USC&GS, USGS, and TVA
Planimetry by USGS and TVA by multiplex methods from
aerial photographs taken 1946. Topography by plane table,
1946, and field examination, 1948, by TVA

Polycyclic projection, 1927 North American datum
10,000-foot grid based on Alabama (West) rectangular
coordinate system

TRUE NORTH
MAGNETIC NORTH
APPROXIMATE MEAN
DECLINATION 1948



CONTOUR INTERVAL 10 FEET
DASHED LINES REPRESENT HALF-INTERVAL CONTOURS
DATUM IS MEAN SEA LEVEL

THIS MAP COMPLIES WITH NATIONAL MAP ACCURACY STANDARDS
FOR SALE BY U. S. GEOLOGICAL SURVEY, WASHINGTON 25, D. C.
AND BY U. S. TENNESSEE VALLEY AUTHORITY, CHATTANOOGA OR KNOXVILLE, TENN.
A FOLDER DESCRIBING TOPOGRAPHIC MAPS AND SYMBOLS IS AVAILABLE ON REQUEST

USGS
Historical File
Topographic Division

U.S.G.S.
FILE COPY
Inspection and Printing

ROUTES USUALLY TRAVELED
HARD, IMPERVIOUS SURFACES
OTHER SURFACE IMPROVEMENTS
U. S. ROUTE STATE ROUTE

HILLSBORO, ALA.
N3437.5-W8707.5/7.5
PRINTED 1951