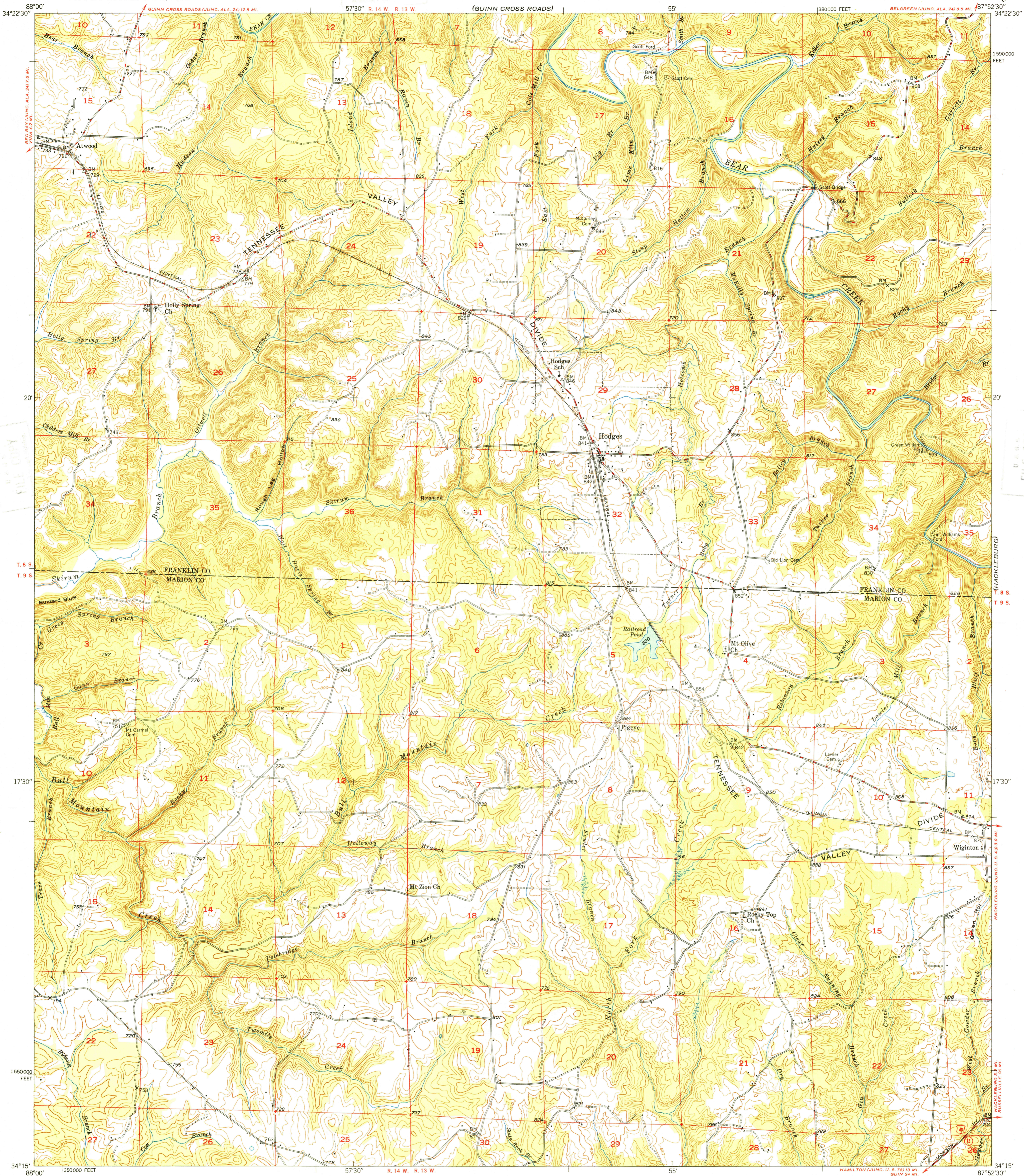
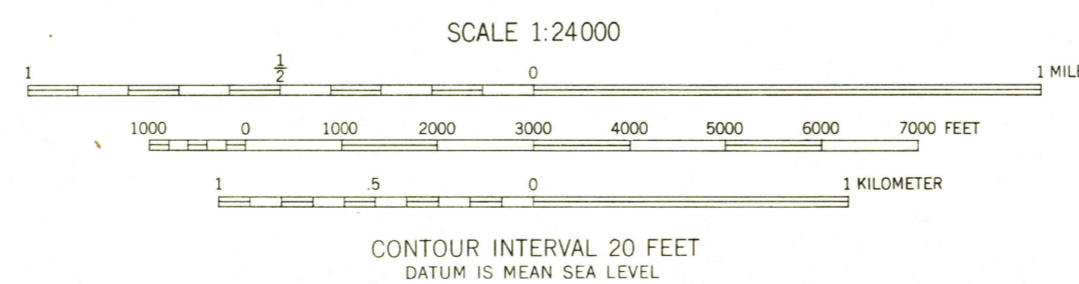


(SHELL)



Mapped, edited, and published by the Geological Survey
Control by USGS, USC & GS, C of E Department of the Army and TVA
Culture and drainage in part compiled from
aerial photographs taken 1938 and 1941
Topography by plane-table methods 1945-1947
Polyconic projection. 1927 North American datum
10,000-foot grid based on Alabama coordinate system,
west zone

TRUE NORTH
MAGNETIC NORTH
APPROXIMATE MEAN
DECLINATION, 1947



SCALE 1:24000
CONTOUR INTERVAL 20 FEET
DATUM IS MEAN SEA LEVEL

ROAD CLASSIFICATION
HARD-SURFACE ALL WEATHER ROADS DRY WEATHER ROADS
Heavy-duty... 4 LANE LANE Improved dirt...
Medium-duty... 4 LANE LANE Unimproved dirt...
Loose-surface, graded, or narrow hard-surface...
U. S. Route State Route

THIS MAP COMPLIES WITH NATIONAL MAP ACCURACY STANDARDS
FOR SALE BY U. S. GEOLOGICAL SURVEY, WASHINGTON 25, D. C.

USGS
Historical File
Topographic Division
FILE COPY

HODGES, ALA.
N3415-W8752.5/7.5

PRINTED 1949

FEB 1 1949
3/25