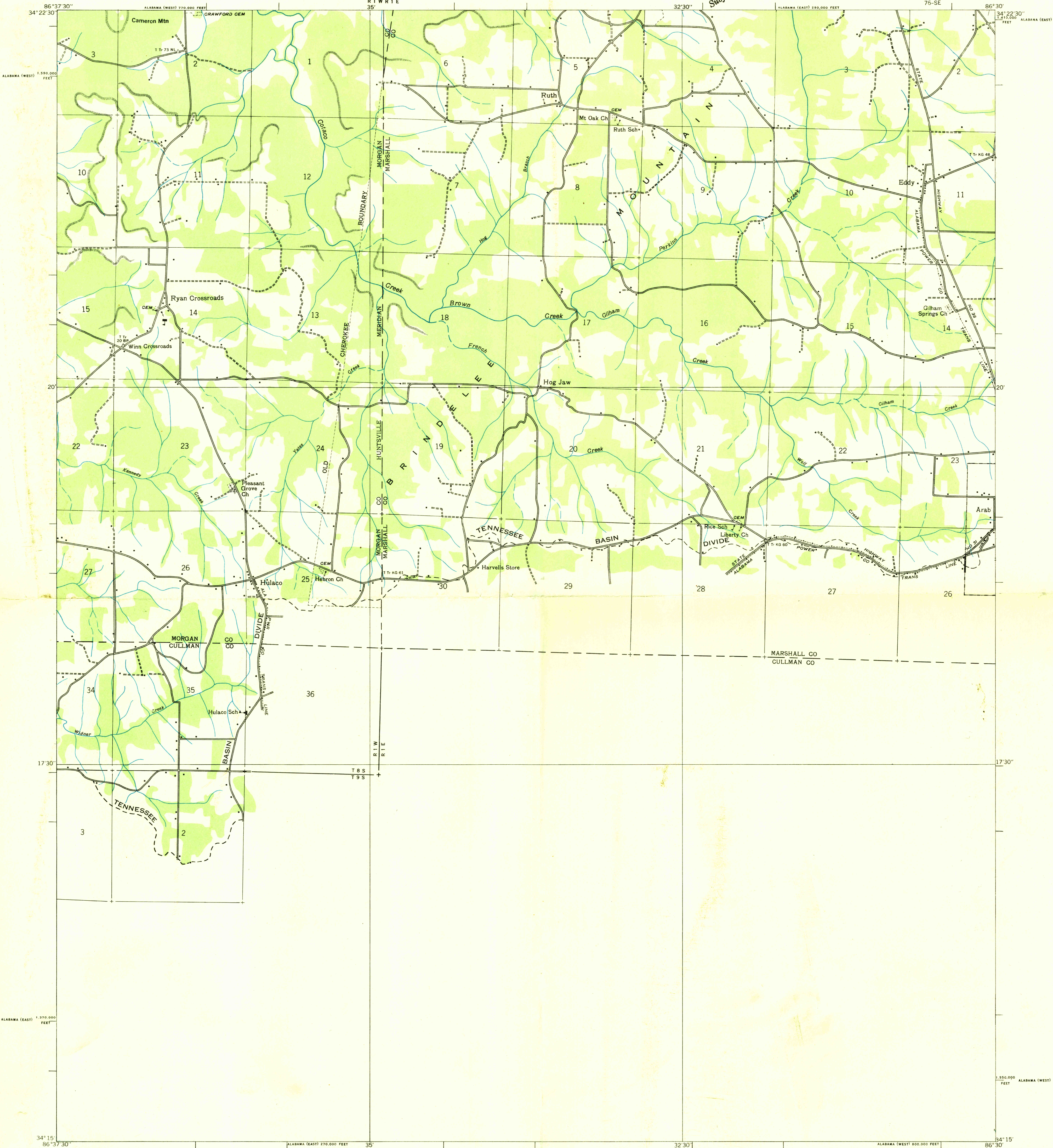
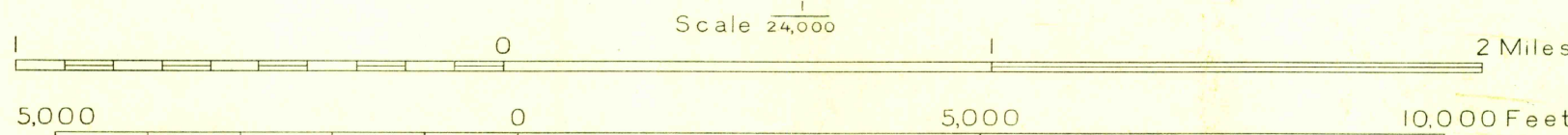


Advance sheet.
Subject to correction.



Albert Pike, Division Engineer
Compiled by U. S. Geological Survey from aerial photographs
Control by U. S. Geological Survey
Field examination in 1936



TRUE NORTH
MAGNETIC NORTH
APPROXIMATE MEAN
DECLINATION, 1936

Polyconic projection 1927 North American datum
10,000 foot grid based on Alabama (East) and Alabama (West)
rectangular coordinate systems

Ridge line
Trail
Rim rock
Probable drainage

HULACO ALA. 75-SE

RETURN TO:
NHD HISTORICAL MAP ARCHIVES
USGS NATIONAL CENTER, MS-522
RESTON, VA 22092

HISTORICAL

USGS
Historical File
Topographic Division