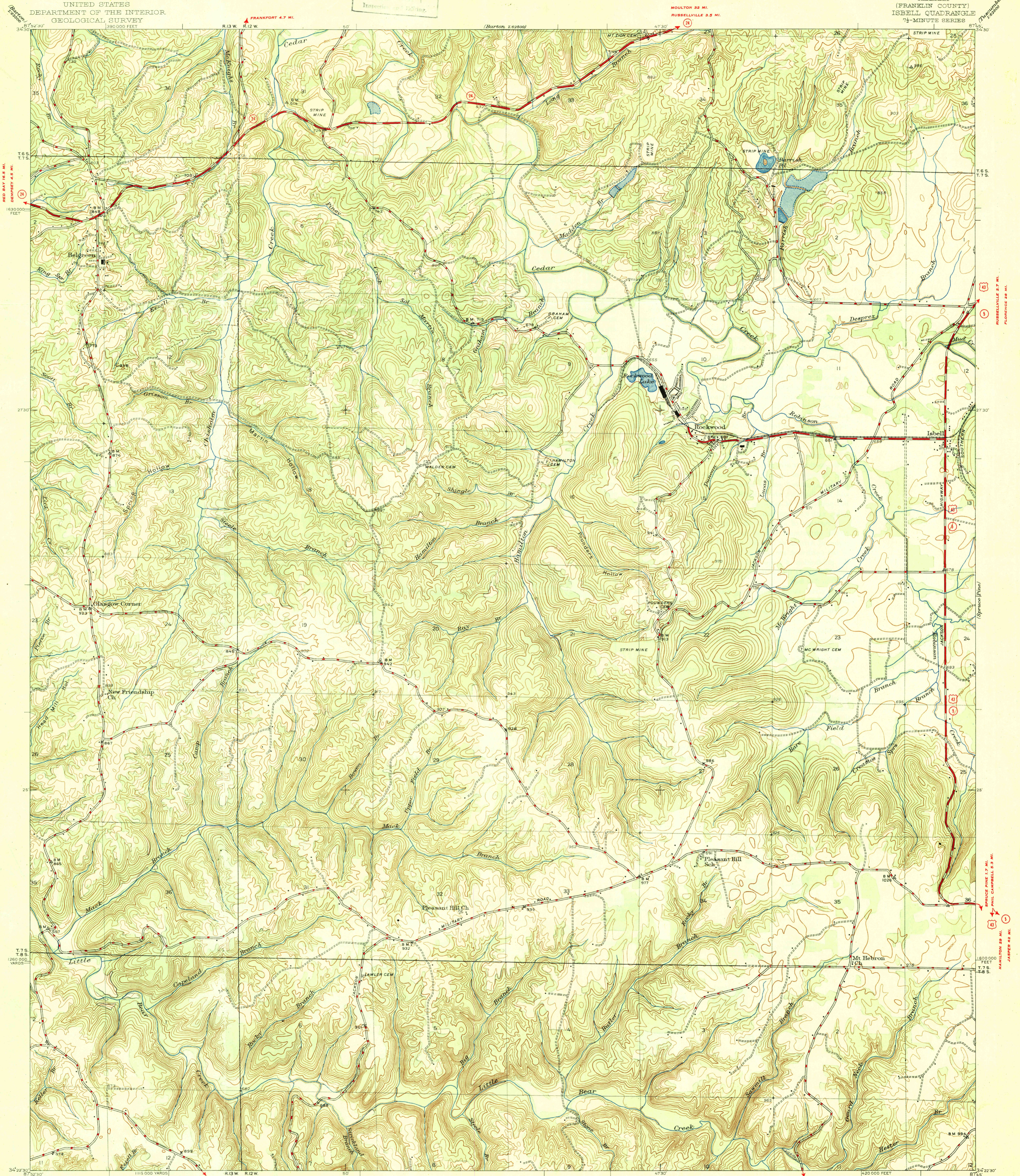


HISTORICAL FILE COPY  
(Return to Washington)

U.S.G.S.  
FILE COPY  
Inspection and Billing

UNITED STATES  
DEPARTMENT OF THE INTERIOR  
GEOLOGICAL SURVEY  
1:24,000 FEET

ALABAMA  
(FRANKLIN COUNTY)  
ISHELL QUADRANGLE  
7 1/2-MINUTE SERIES



RED BAY 1.6 MI.  
DENVER 4.8 MI.

MOULTON 22 MI.  
RUSSELLVILLE 3.5 MI.

RUSSELLVILLE 3.7 MI.  
FLORENCE 26 MI.

SPRUCE PINE 1.7 MI.  
PHIL CAMPBELL 5.3 MI.  
HAMILTON 22 MI.  
JASPER 22 MI.

Mapped by the Geological Survey  
1945

Scale 1:24,000

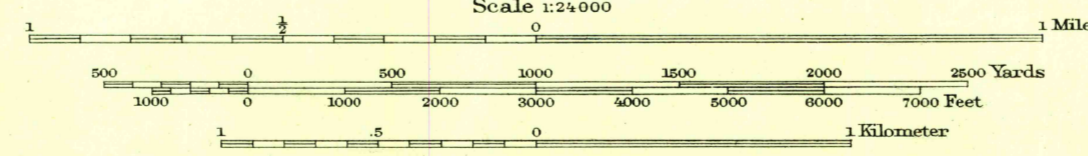
420 000 FEET  
Polyconic projection, 1927 North American datum  
5000 yard grid based on U.S. zone system, C  
10000 foot grid based on Alabama (West)  
rectangular coordinate system

USGS  
Historical File  
Topographic Division

ISHELL, ALA.  
Edition of 1947  
1:24,000

ROAD CLASSIFICATION  
1946  
Dependable hard surface  
Heavy duty road  
Secondary hard surface  
at weather road  
More than two lanes indicated along road with tick at point of change  
1946  
Lime surface graded  
Unsurfaced graded  
Old road  
Slack line  
U.S. Route 15  
State Route 2

APPROXIMATE MEAN  
DECLINATION, 1955



Contour interval 20 feet  
Datum to mean sea level

HISTORICAL

SEP 20 1947

9/21/47  
2125