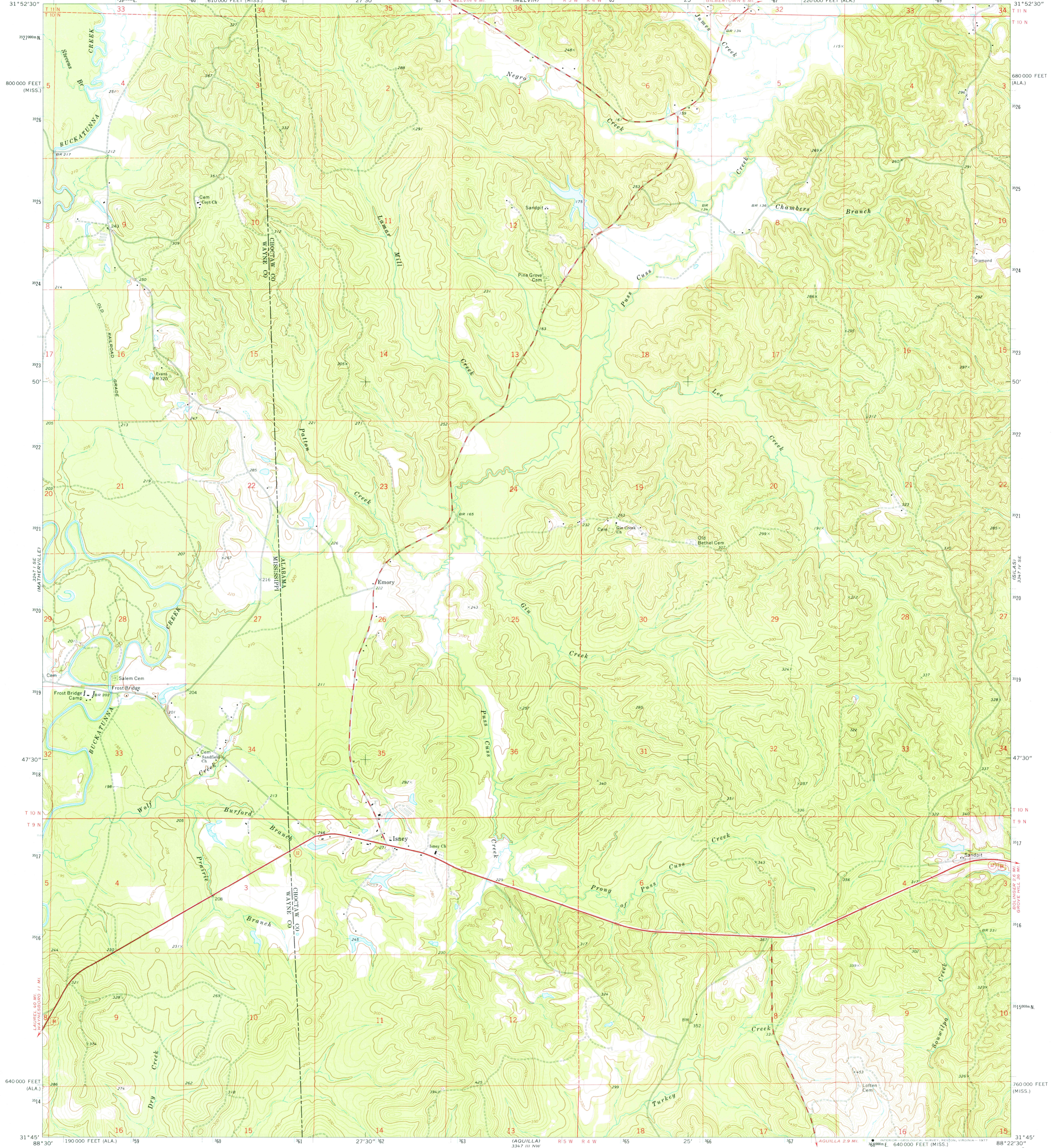


32° 14' N
104° 47' W

UNITED STATES
DEPARTMENT OF THE INTERIOR
GEOLOGICAL SURVEY

ISNEY QUADRANGLE
ALABAMA—MISSISSIPPI
7.5 MINUTE SERIES (TOPOGRAPHIC)

32° 14' N
104° 47' W



Mapped, edited, and published by the Geological Survey

Control by USGS and NOS/NOAA

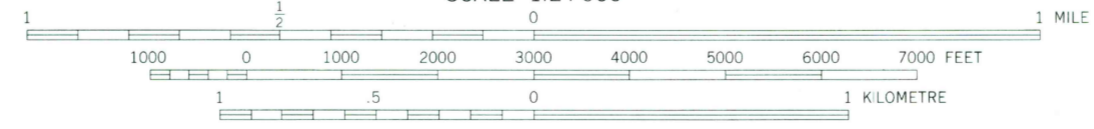
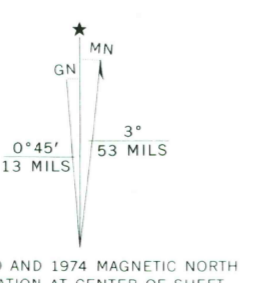
Topography by photogrammetric methods from aerial photographs taken 1973. Field checked 1974

Projection: Alabama coordinate system, west zone (transverse Mercator)

10,000 foot grid ticks based on Alabama coordinate system, west zone and Mississippi coordinate system, east zone

1000-metre Universal Transverse Mercator grid ticks, zone 16, shown in blue. 1927 North American datum

Fine red dashed lines indicate selected fence and field lines where generally visible on aerial photographs. This information is unchecked



CONTOUR INTERVAL 10 FEET
DOTTED LINES REPRESENT 5-FOOT CONTOURS
NATIONAL GEODETIC VERTICAL DATUM OF 1929



ROAD CLASSIFICATION	
Primary highway, hard surface	Light-duty road, hard or improved surface
Secondary highway, hard surface	Unimproved road
Interstate Route	U. S. Route
	State Route

THIS MAP COMPLIES WITH NATIONAL MAP ACCURACY STANDARDS FOR SALE BY U. S. GEOLOGICAL SURVEY, RESTON, VIRGINIA 22092 A FOLDER DESCRIBING TOPOGRAPHIC MAPS AND SYMBOLS IS AVAILABLE ON REQUEST

USGS
Historical File
Topographic Division

ISNEY, ALA.—MISS.
N3145—W822.5/7.5
1974

JUL 27 1977

2850

AMS 3347 IV SW—SERIES W844