

3448 IV NW
JEFFERSON

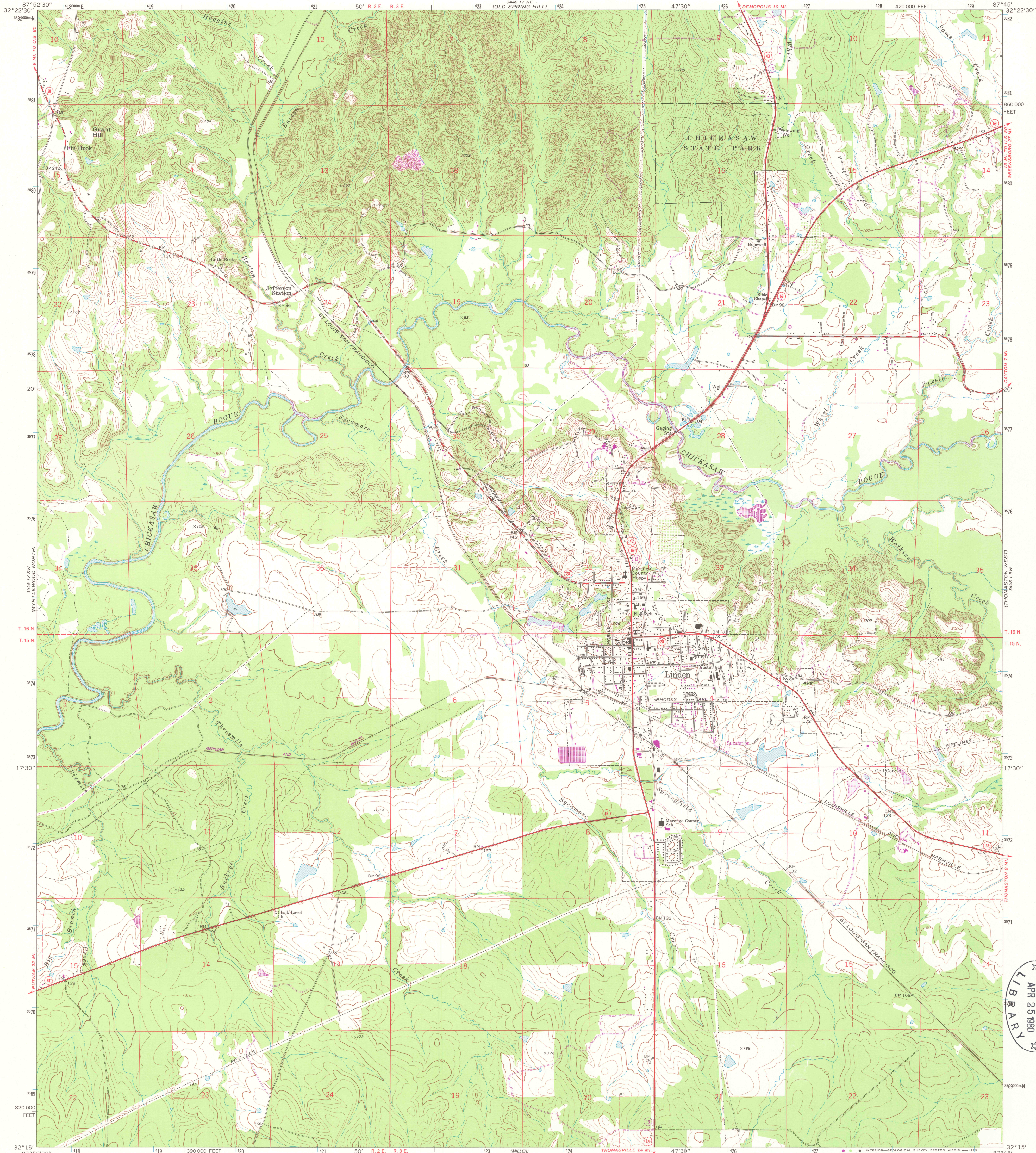
UNITED STATES
DEPARTMENT OF THE INTERIOR
GEOLOGICAL SURVEY



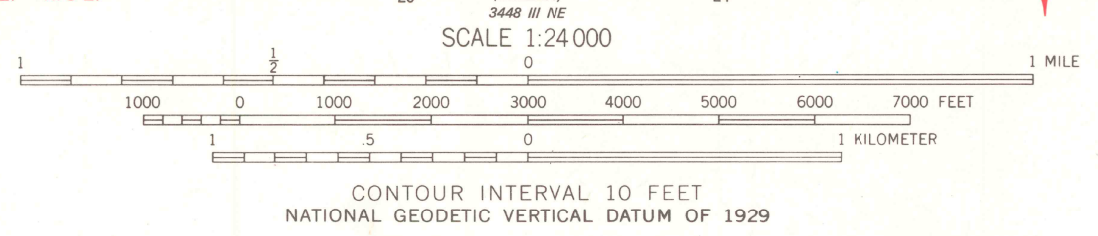
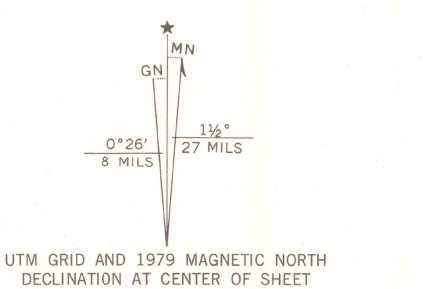
STATE OF ALABAMA
GEOLOGICAL SURVEY OF ALABAMA

LINDEN QUADRANGLE
ALABAMA-MARENGO CO.
7.5 MINUTE SERIES (TOPOGRAPHIC)

3448 IV
GALLIUM



Mapped, edited, and published by the Geological Survey
Control by USGS and USC&GS.
Topography by photogrammetric methods from aerial
photographs taken 1967. Field checked 1970
Projection and 10,000-foot grid ticks: Alabama coordinate
system, west zone (transverse Mercator)
1000-meter Universal Transverse Mercator grid ticks,
zone 16, shown in blue. 1927 North American datum
Fine red dashed lines indicate selected fence and field lines where
generally visible on aerial photographs. This information is unchecked
There may be private inholdings within the boundaries of
the National or State reservations shown on this map
Revisions shown in purple and woodland compiled from
aerial photographs taken 1976 and other source data
This information not field checked. Map edited 1979



ROAD CLASSIFICATION

Primary highway, hard surface	Light-duty road, hard or improved surface
Secondary highway, hard surface	Unimproved road
Interstate Route	U. S. Route
	State Route

THIS MAP COMPLIES WITH NATIONAL MAP ACCURACY STANDARDS
FOR SALE BY U. S. GEOLOGICAL SURVEY, RESTON, VIRGINIA 22092
A FOLDER DESCRIBING TOPOGRAPHIC MAPS AND SYMBOLS IS AVAILABLE ON REQUEST



LINDEN, ALA.
N3215-W8745/7.5
1970
PHOTOREVISED 1979
AMS 3448 IV SE-SERIES W844

