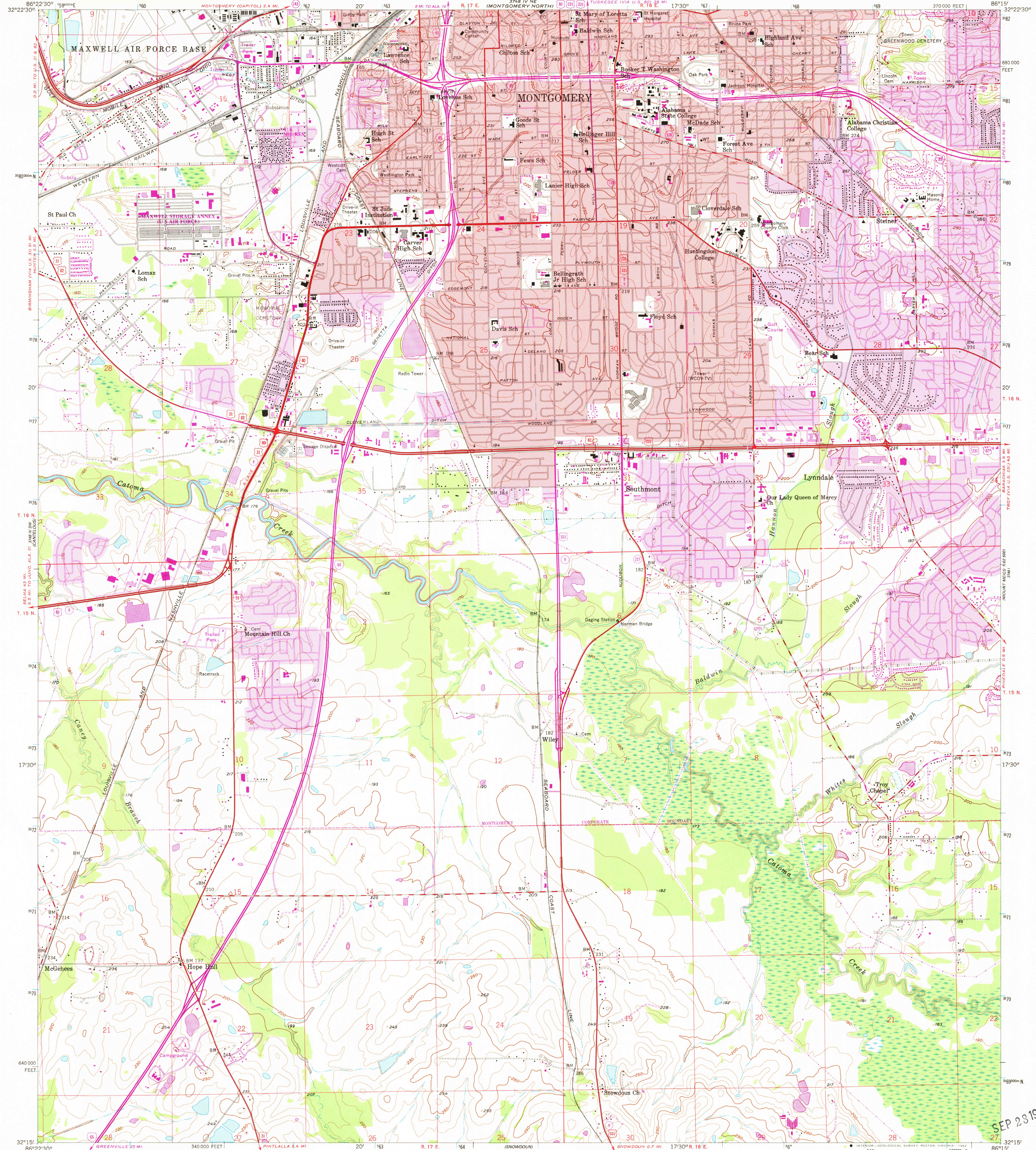


32°22'30" N  
86°22'30" W

UNITED STATES  
DEPARTMENT OF THE INTERIOR  
GEOLOGICAL SURVEY

MONTGOMERY SOUTH QUADRANGLE  
ALABAMA—MONTGOMERY CO.  
7.5 MINUTE SERIES (TOPOGRAPHIC)  
SE/4 MONTGOMERY 15' QUADRANGLE

32°22'30" N  
86°15' W



Mapped, edited, and published by the Geological Survey

Control by USGS and NOS/NOAA

Topography by photogrammetric methods from aerial photographs taken 1955. Field checked 1958

Polyconic projection. 10,000-foot grid ticks based on Alabama coordinate system, east zone. 1000-meter Universal Transverse Mercator grid ticks, zone 16, shown in blue. 1927 North American Datum. To place on the predicted North American Datum 1983 move the projection lines 12 meters south and 3 meters west as shown by dashed corner ticks

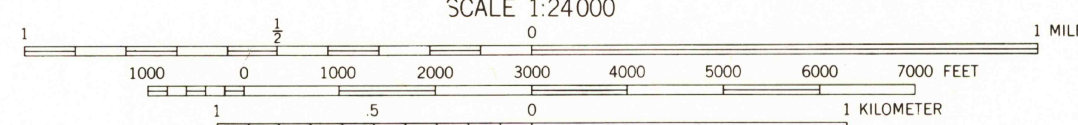
Red tint indicates areas in which only landmark buildings are shown

There may be private inholdings within the boundaries of the National or State reservations shown on this map

Revisions shown in purple and woodland compiled from aerial photographs taken 1979 and other sources. This information not field checked. Map edited 1981

Purple tint indicates extension of urban areas

UTM GRID AND 1981 MAGNETIC NORTH DECLINATION AT CENTER OF SHEET



CONTOUR INTERVAL 10 FEET  
NATIONAL GEODETIC VERTICAL DATUM OF 1929

THIS MAP COMPLIES WITH NATIONAL MAP ACCURACY STANDARDS FOR SALE BY U.S. GEOLOGICAL SURVEY, RESTON, VIRGINIA 22092 A FOLDER DESCRIBING TOPOGRAPHIC MAPS AND SYMBOLS IS AVAILABLE ON REQUEST



ROAD CLASSIFICATION  
Heavy-duty ——— Light-duty ———  
Medium-duty ——— Unimproved dirt ———

U.S. Route ——— State Route ———  
Interstate Route ———

MONTGOMERY SOUTH, ALA.  
SE/4 MONTGOMERY 15' QUADRANGLE  
N3215—W8615/7.5

1958

PHOTOREVISED 1981  
DMA 3748 IV SE—SERIES V844

SEP 23 1982  
32°22'30" N  
86°15' W