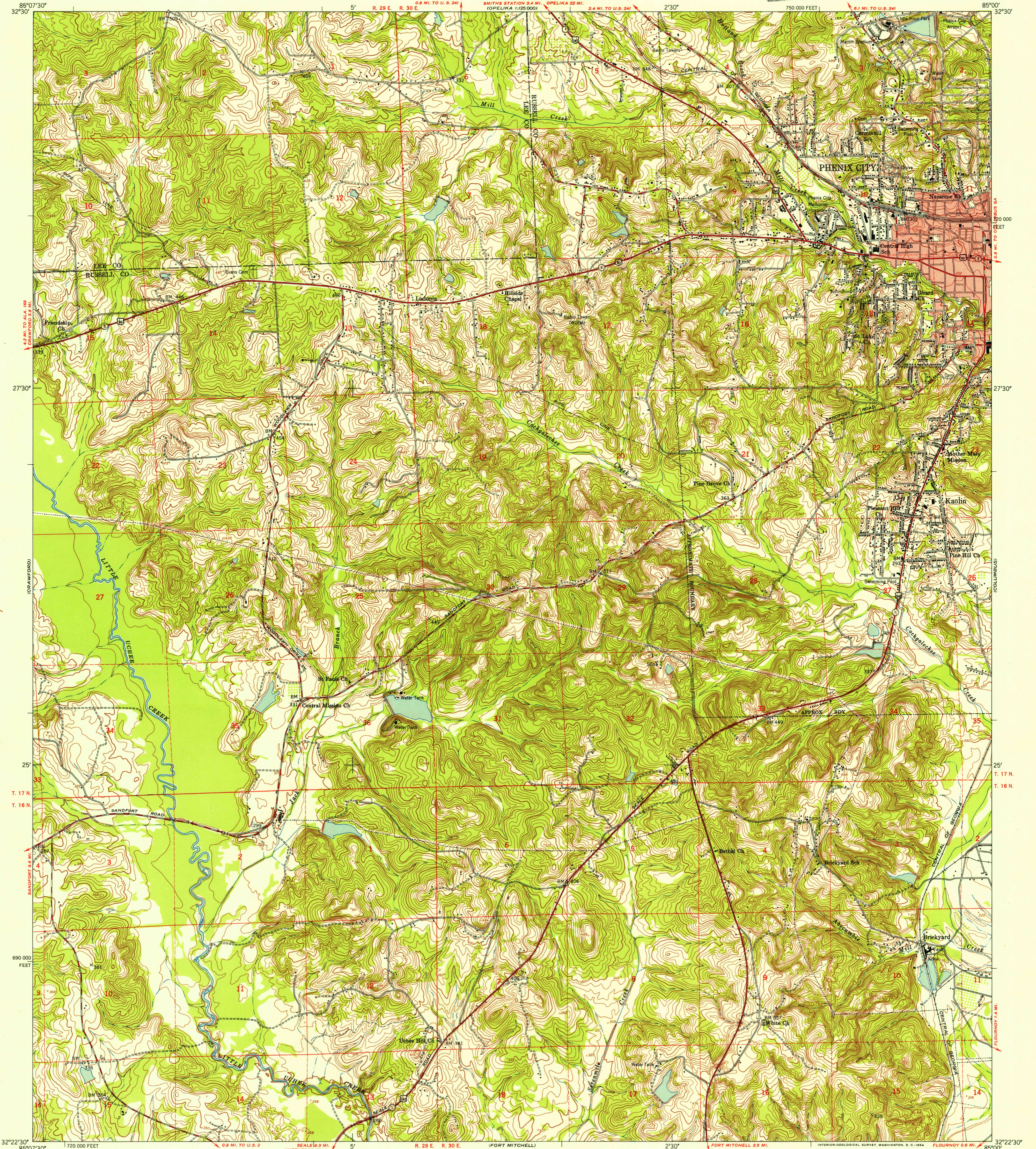
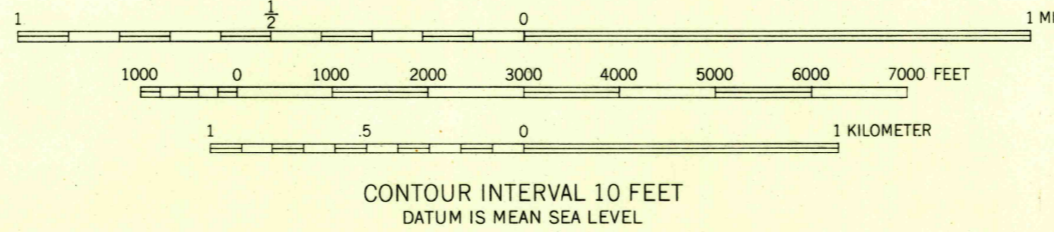
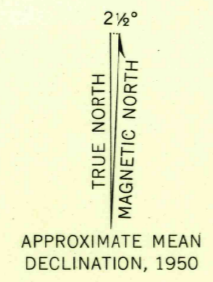


U.S.G.S.  
FILE COPY  
Inoperative and Editing



Mapped by the Army Map Service  
Published for civil use by the Geological Survey  
Control by USC&GS, USGS, USCE, and Georgia  
Geodetic Survey  
Topography from aerial photographs by multiplex methods  
Aerial photographs taken 1947 and 1950. Field check 1950  
Polyconic projection. 1927 North American datum  
10,000-foot grid based on Alabama coordinate system,  
east zone  
Red tint indicates areas in which only  
landmark buildings are shown  
Dashed land lines indicate approximate locations  
Unchecked elevations are shown in brown



THIS MAP COMPLIES WITH NATIONAL MAP ACCURACY STANDARDS  
FOR SALE BY U. S. GEOLOGICAL SURVEY, WASHINGTON 25, D. C.  
A FOLDER DESCRIBING TOPOGRAPHIC MAPS AND SYMBOLS IS AVAILABLE ON REQUEST

USGS  
Historical File  
Topographic Division

ROAD CLASSIFICATION

Heavy-duty	4 LANE 16 LANE	Light-duty	2 LANE 16 LANE
Medium-duty	4 LANE 16 LANE	Unimproved dirt	-----
	U. S. Route		State Route



U.S.G.S.  
FILE COPY  
Inoperative and Editing

PHENIX CITY, ALA.  
NE/4 SCALE 15' QUADRANGLE  
N3222.5-W8500/7.5  
1950

JAN 26 1954