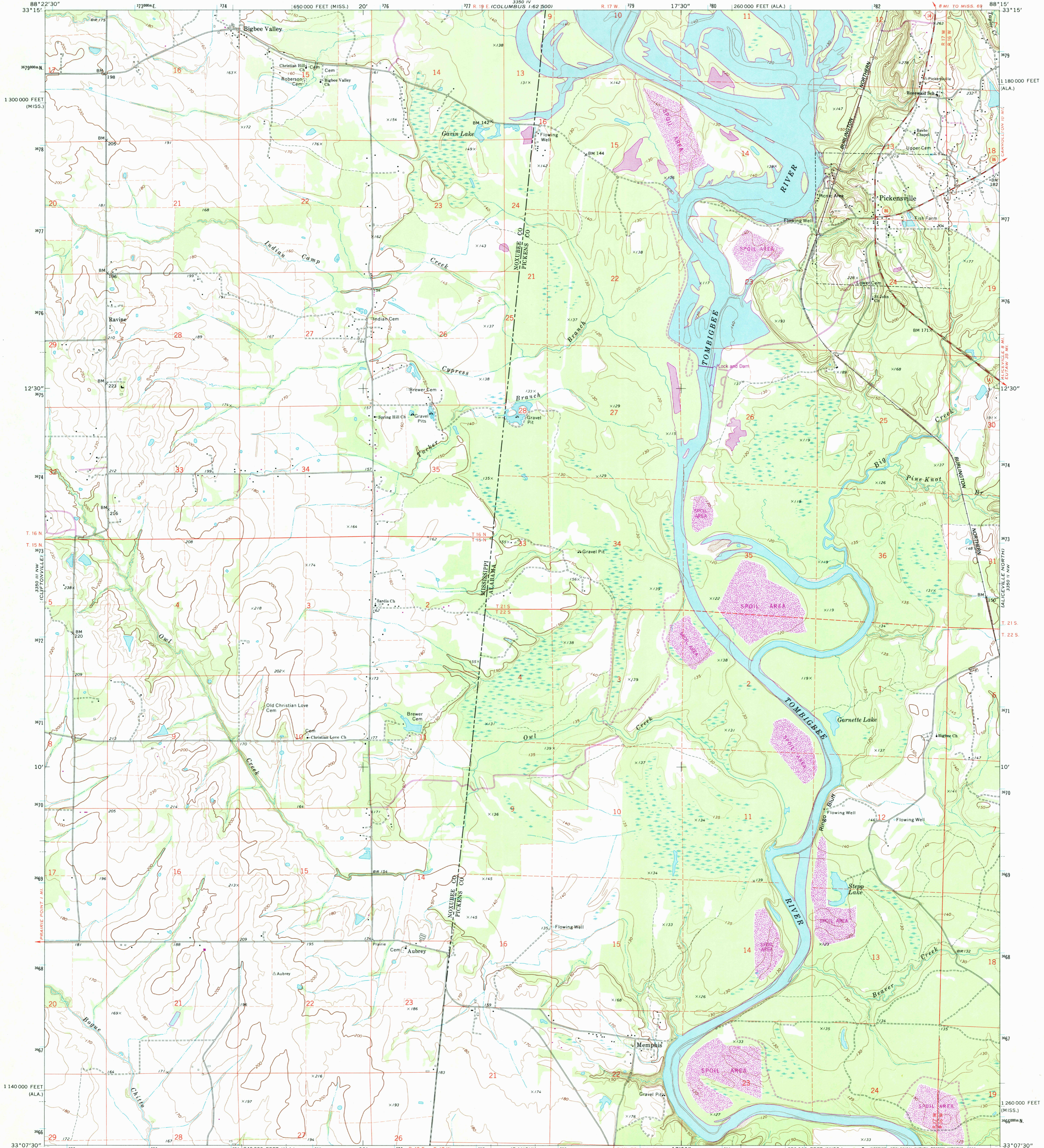


UNITED STATES
DEPARTMENT OF THE INTERIOR
GEOLOGICAL SURVEY

PICKENVILLE QUADRANGLE
ALABAMA—MISSISSIPPI
7.5 MINUTE SERIES (TOPOGRAPHIC)

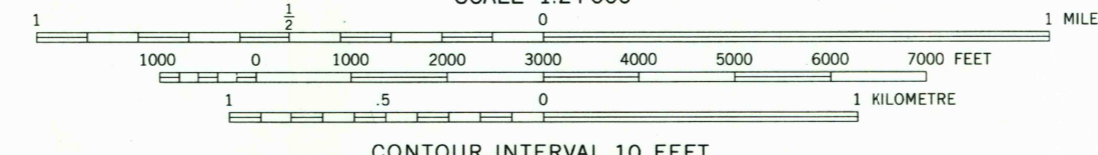
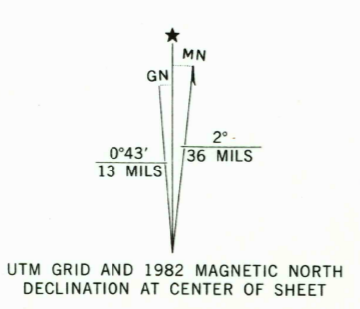


Mapped, edited, and published by the Geological Survey

Control by USGS and NOS/NOAA
Topography by photogrammetric methods from aerial photographs taken 1972. Field checked 1974

Contours in Alabama portion compiled from USCE maps dated 1971

Projection: Alabama coordinate system, west zone (Transverse Mercator)
10,000-foot grid ticks based on Alabama coordinate system, west zone and Mississippi coordinate system, east zone
1000-metre Universal Transverse Mercator grid ticks, zone 16, shown in blue. 1927 North American datum
To place on the predicted North American Datum 1983 move the projection lines 11 meters south and 3 meters east as shown by dashed corner ticks



CONTOUR INTERVAL 10 FEET
DOTTED LINES REPRESENT 5-FOOT CONTOURS
NATIONAL GEODETIC VERTICAL DATUM OF 1929

THIS MAP COMPLIES WITH NATIONAL MAP ACCURACY STANDARDS FOR SALE BY U.S. GEOLOGICAL SURVEY, RESTON, VIRGINIA 22092
A FOLDER DESCRIBING TOPOGRAPHIC MAPS AND SYMBOLS IS AVAILABLE ON REQUEST

Revisions shown in purple compiled from aerial photographs taken 1981 and other sources
This information not field checked. Map edited 1982



QUADRANGLE LOCATION

ROAD CLASSIFICATION

Primary highway, hard surface	Light-duty road, hard or improved surface
Secondary highway, hard surface	Unimproved road
○ Interstate Route	○ U.S. Route
	○ State Route

PICKENVILLE, ALA.—MISS.
N3307.5—W8815.7.5

1974
PHOTOREVISED 1982
DMA 3350 III NE—SERIES V844

MAR 16 1983

63 2700