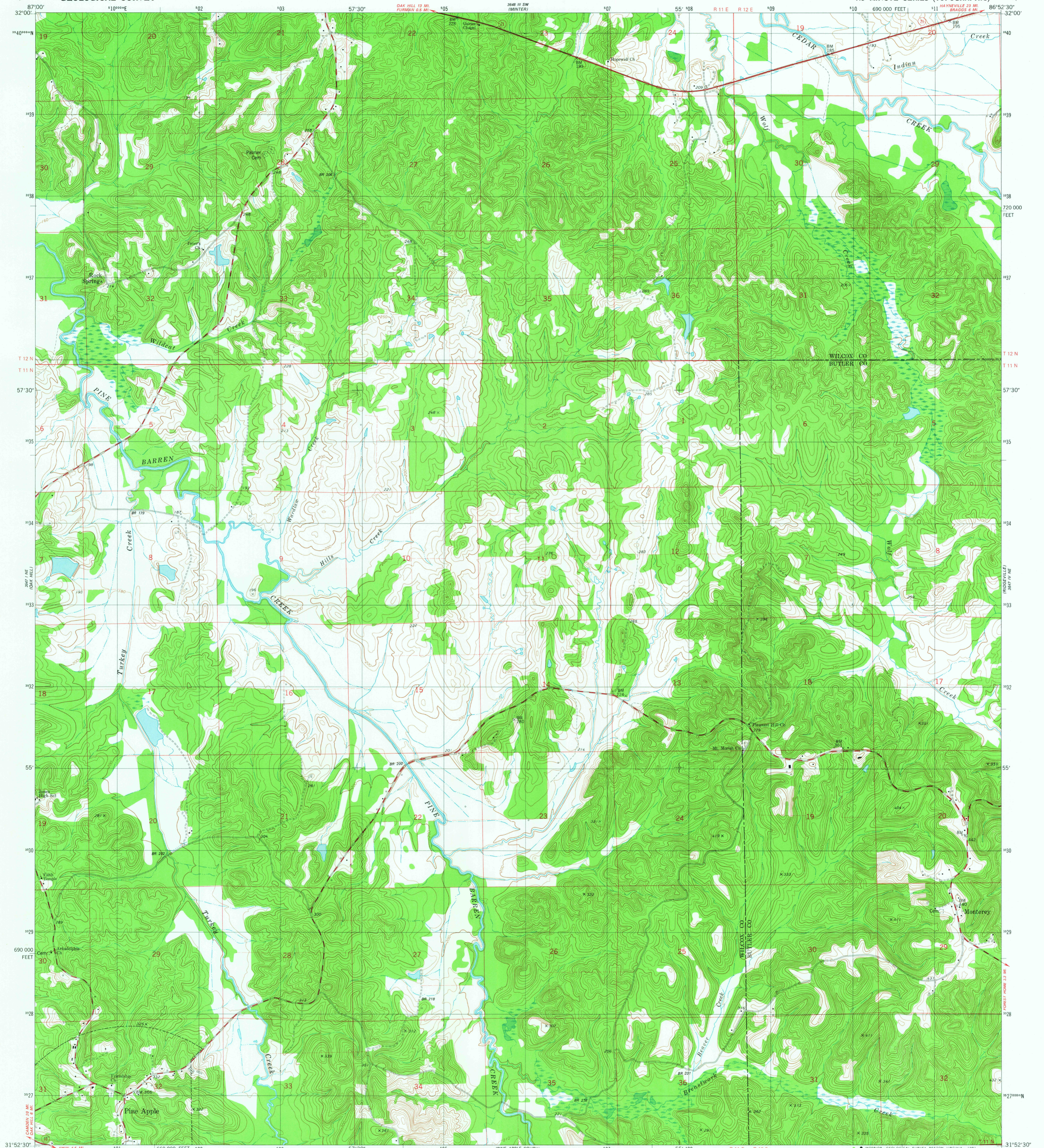


3647 III SE  
(CONTOUR INTERVAL)

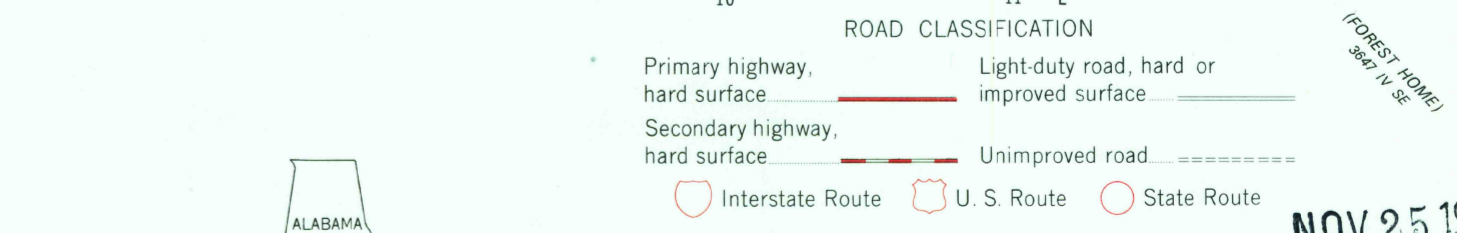
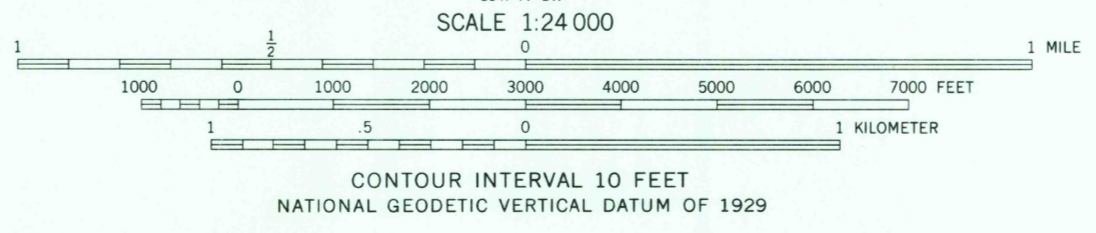
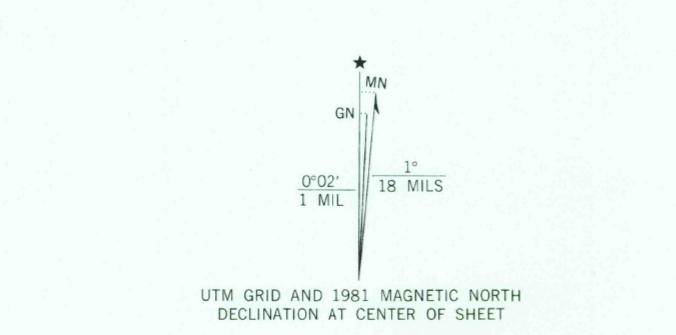
UNITED STATES  
DEPARTMENT OF THE INTERIOR  
GEOLOGICAL SURVEY

PINE APPLE NORTH QUADRANGLE  
ALABAMA  
7.5 MINUTE SERIES (TOPOGRAPHIC)

3647 III SE  
(CONTOUR INTERVAL)



Mapped, edited, and published by the Geological Survey  
Control by USGS and NOS/NOAA  
Topography by photogrammetric methods from aerial photographs taken 1974 and 1975. Field checked 1976. Map edited 1981  
Projection and 10,000-foot grid ticks: Alabama coordinate system, west zone (transverse Mercator)  
1000-meter Universal Transverse Mercator grid, zone 16 1927 North American Datum  
To place on the predicted North American Datum 1983 move the projection lines 13 meters south and 2 meters west as shown by dashed corner ticks  
Fine red dashed lines indicate selected fence and field lines where generally visible on aerial photographs. This information is unchecked



THIS MAP COMPLIES WITH NATIONAL MAP ACCURACY STANDARDS  
FOR SALE BY U.S. GEOLOGICAL SURVEY, RESTON, VIRGINIA 22092  
A FOLDER DESCRIBING TOPOGRAPHIC MAPS AND SYMBOLS IS AVAILABLE ON REQUEST

PINE APPLE NORTH, ALA.  
N3152.5-W8652.5/7.5  
1981  
DMA 3647 IV NW-SERIES V844

NOV 25 1991

2000