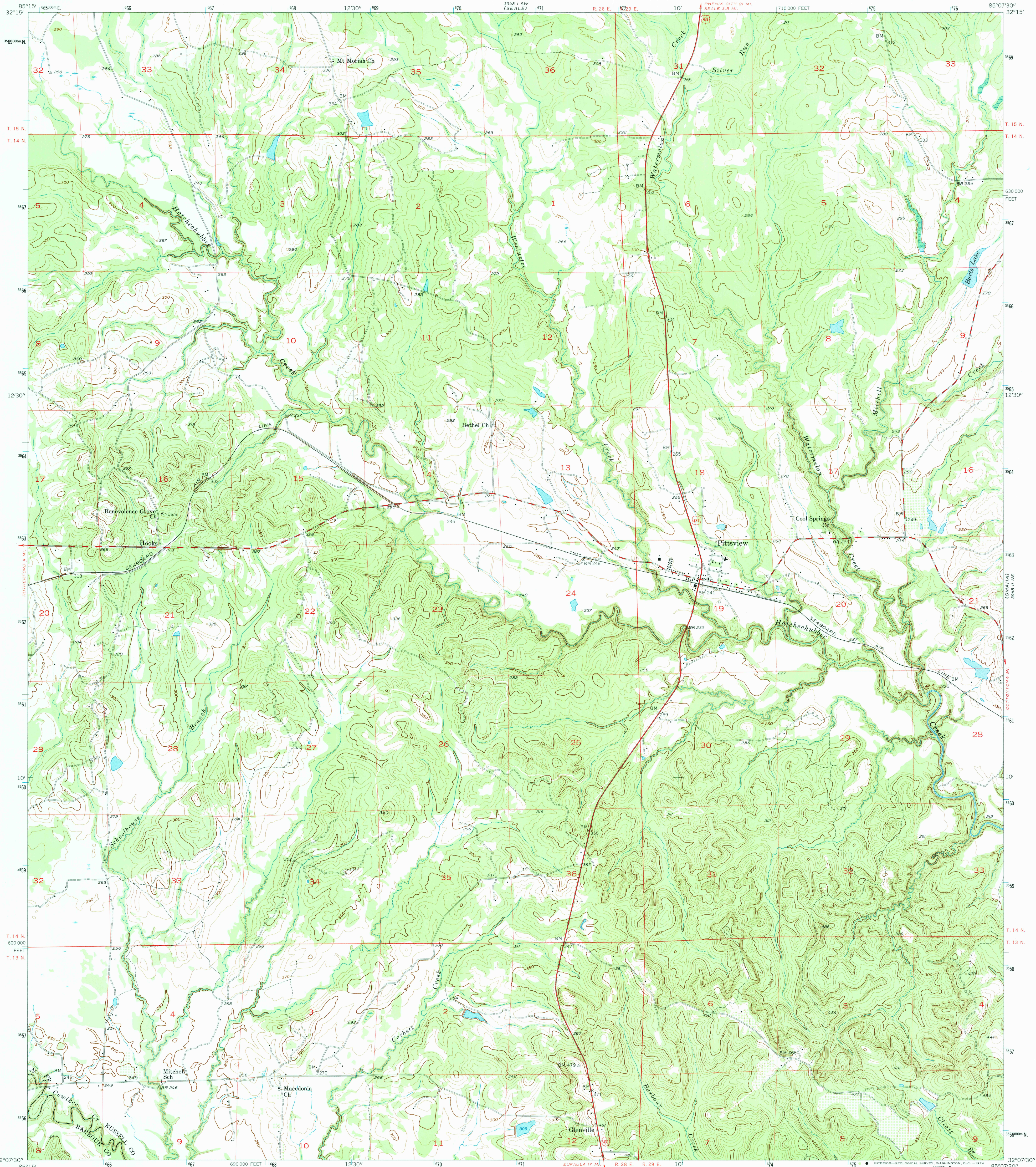
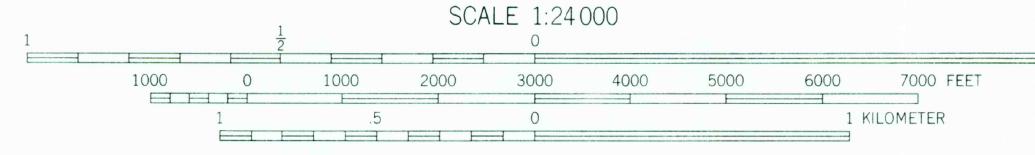
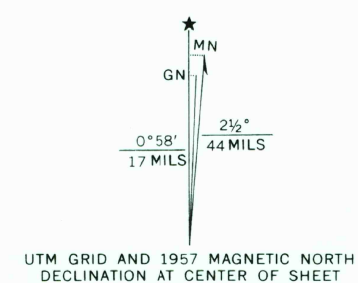


398 SE
(FT. MITCHELL)



Mapped, edited, and published by the Geological Survey
Control by USGS and USC&GS
Topography from aerial photographs by Kelsh plotter
Aerial photographs taken 1955. Field check 1957
Polyconic projection. 1927 North American datum
10,000-foot grid based on Alabama coordinate system,
east zone
1000-meter Universal Transverse Mercator grid ticks,
zone 16, shown in blue



CONTOUR INTERVAL 10 FEET
DATUM IS MEAN SEA LEVEL



ROAD CLASSIFICATION

Heavy-duty	Light-duty
Medium-duty	Unimproved dirt
U.S. Route	

FEB 07 1974

THIS MAP COMPLIES WITH NATIONAL MAP ACCURACY STANDARDS
FOR SALE BY U.S. GEOLOGICAL SURVEY, RESTON, VIRGINIA 22092
A FOLDER DESCRIBING TOPOGRAPHIC MAPS AND SYMBOLS IS AVAILABLE ON REQUEST

1833
HISTORICAL FILE
TOPOGRAPHIC DIVISION

PITTSVIEW, ALA.
N3207.5-W8507.5/7.5
1957
AMS 3948 II NW-SERIES V844

1655