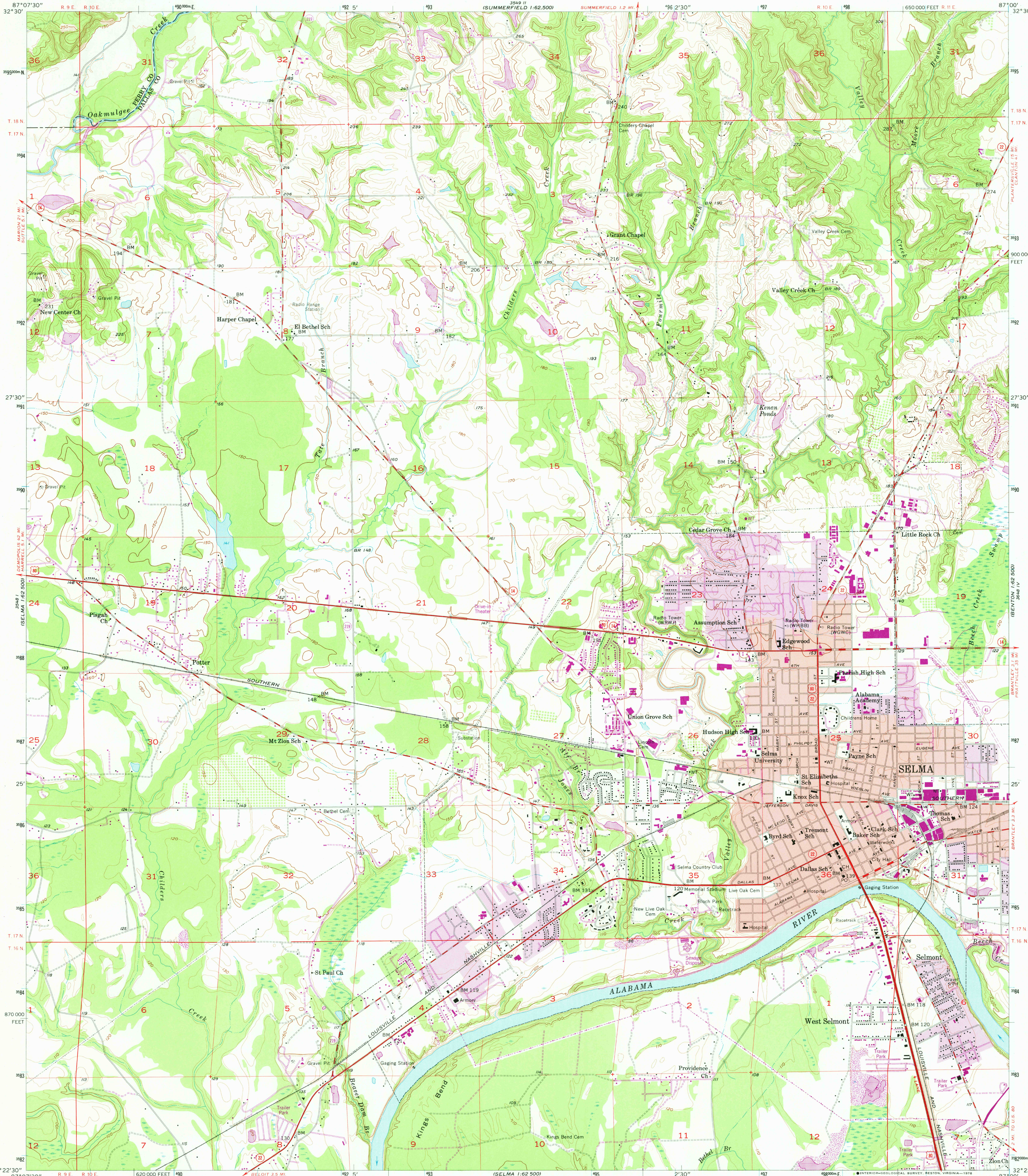
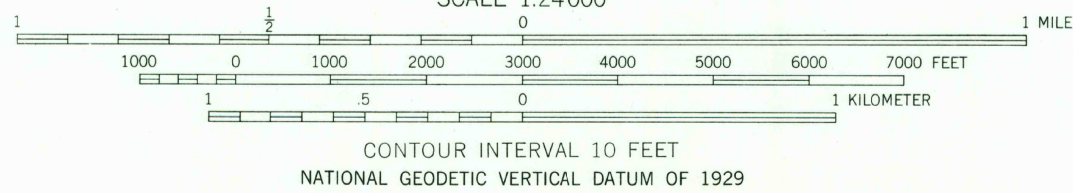
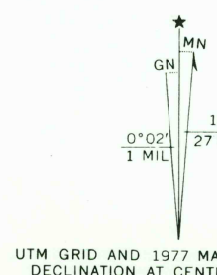


UNITED STATES
DEPARTMENT OF THE INTERIOR
GEOLOGICAL SURVEY

SELMA QUADRANGLE
ALABAMA
7.5 MINUTE SERIES (TOPOGRAPHIC)
NE/4 SELMA 15' QUADRANGLE



Mapped, edited, and published by the Geological Survey
Control by USGS, USC&GS, and USCE
Topography from aerial photographs by Kelsh plotter
Aerial photographs taken 1955. Field check 1958
Polyconic projection. 1927 North American datum
10,000-foot grid based on Alabama coordinate system, west zone
1000-meter Universal Transverse Mercator grid ticks,
zone 16, shown in blue
Red tint indicates area in which only
landmark buildings are shown
Purple tint indicates extension of urban areas
Revisions shown in purple compiled by the Geological Survey from aerial
photographs taken 1975. This information not field checked. Map edited 1977



THIS MAP COMPLIES WITH NATIONAL MAP ACCURACY STANDARDS
FOR SALE BY U.S. GEOLOGICAL SURVEY, RESTON, VIRGINIA 22092
A FOLDER DESCRIBING TOPOGRAPHIC MAPS AND SYMBOLS IS AVAILABLE ON REQUEST



ROAD CLASSIFICATION
Heavy-duty ——— Light-duty ———
Medium-duty ——— Unimproved dirt ———
U.S. Route ——— State Route ———

USGS
Historical File
Topographic Division

SEP 0 1 1978
SELMA, ALA.
NE/4 SELMA 15' QUADRANGLE
N3222.5-W8700/7.5
1958
PHOTOREVISED 1977
AMS 3548 1 NE-SERIES V844