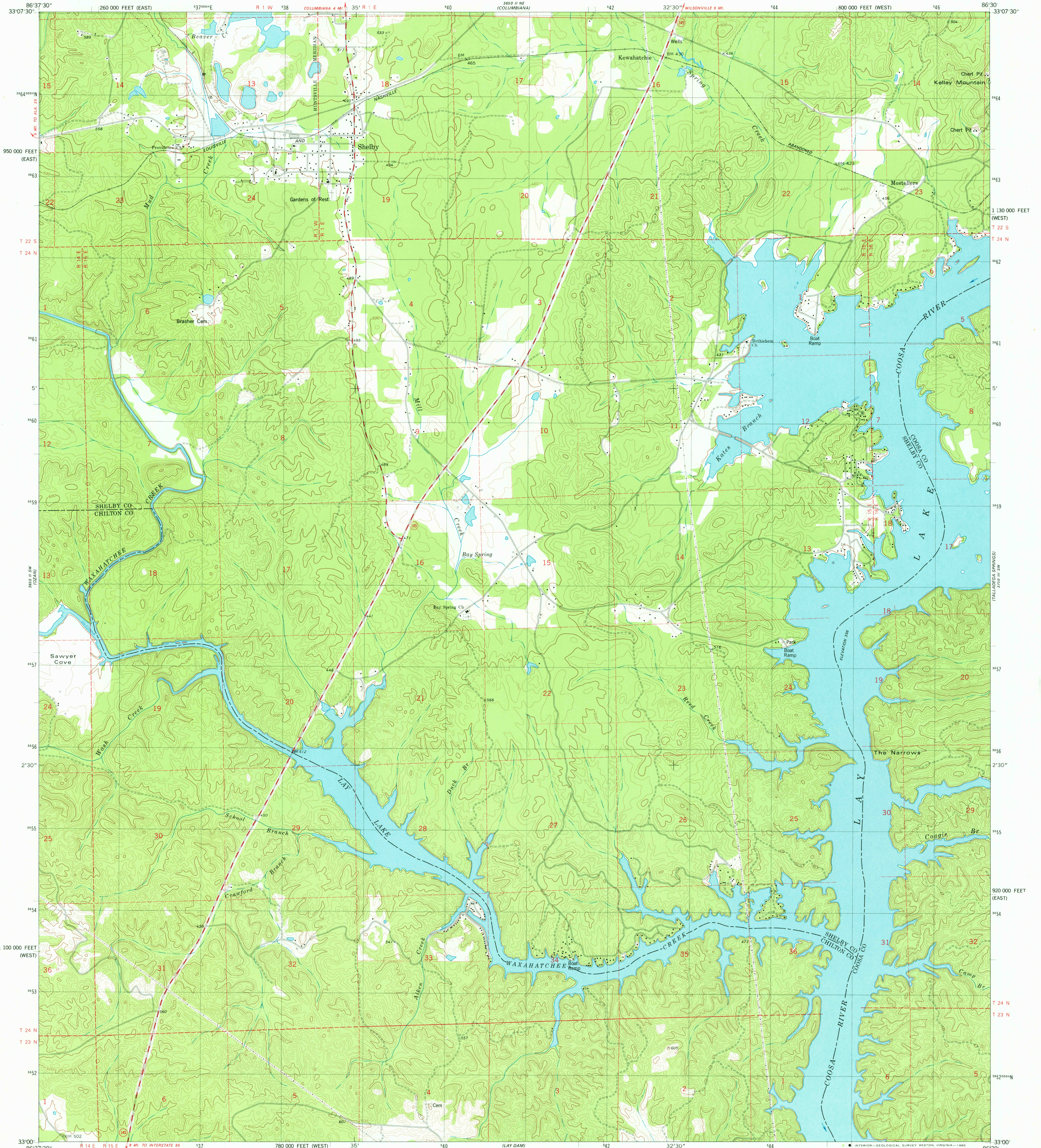


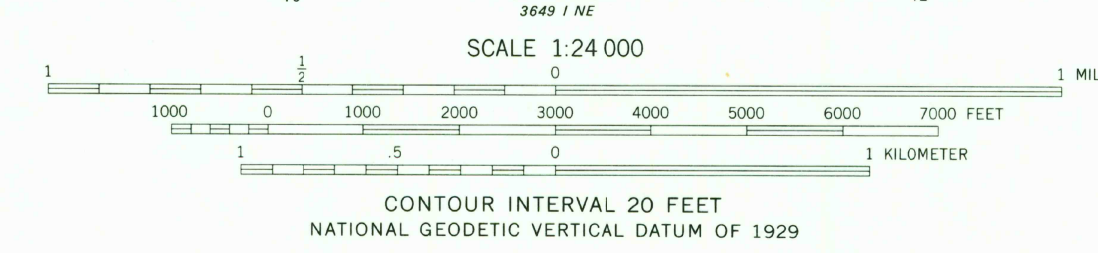
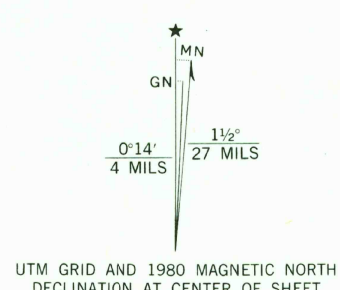
UNITED STATES
DEPARTMENT OF THE INTERIOR
GEOLOGICAL SURVEY

SHELBY QUADRANGLE
ALABAMA
7.5 MINUTE SERIES (TOPOGRAPHIC)
SE/4 COLUMBIANA 15' QUADRANGLE



Mapped, edited, and published by the Geological Survey

Control by USGS and NOS/NOAA
Topography by photogrammetric methods from aerial photographs taken 1974. Field checked 1975. Map edited 1980
Projection: Alabama coordinate system, west zone (transverse Mercator)
10,000-foot grid ticks based on Alabama coordinate system, west and east zones
1000-meter Universal Transverse Mercator grid, zone 16 1927 North American Datum
To place on the predicted North American Datum 1983 move the projection lines 10 meters south and 2 meters west as shown by dashed corner ticks
Fine red dashed lines indicate selected fence and field lines where generally visible on aerial photographs. This information is unchecked



THIS MAP COMPLIES WITH NATIONAL MAP ACCURACY STANDARDS FOR SALE BY U.S. GEOLOGICAL SURVEY, RESTON, VIRGINIA 22092 A FOLDER DESCRIBING TOPOGRAPHIC MAPS AND SYMBOLS IS AVAILABLE ON REQUEST

ROAD CLASSIFICATION

Primary highway, hard surface	Light-duty road, hard or improved surface
Secondary highway, hard surface	Unimproved road
Interstate Route	U.S. Route
	State Route

USGS
Historical File
Topographic Division

SHELBY, ALA.
SE/4 COLUMBIANA 15' QUADRANGLE
N3300-W86307.5
1980
DMA 3650 II SE-SERIES V844

JUL 30 1980
#5
1600