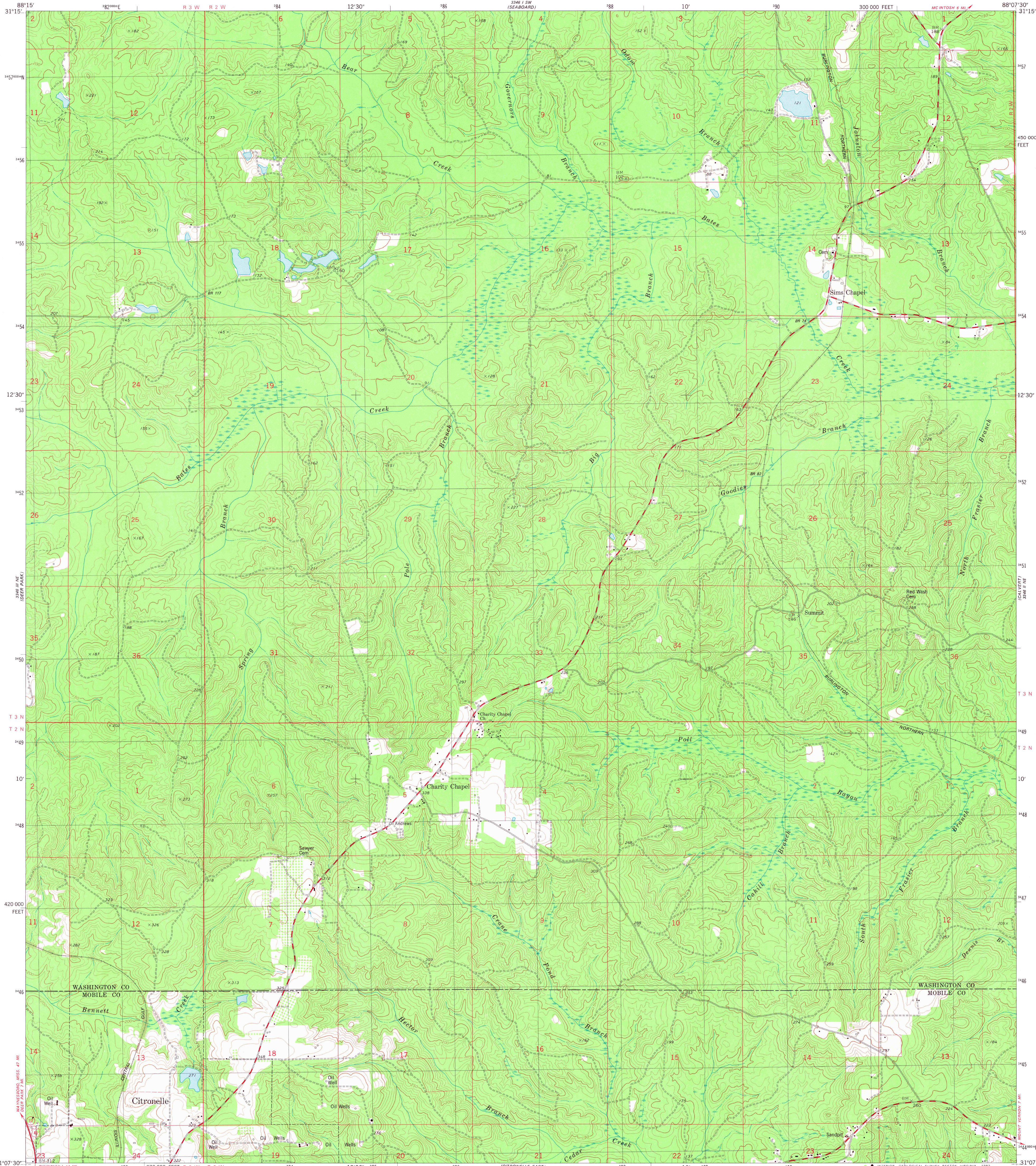


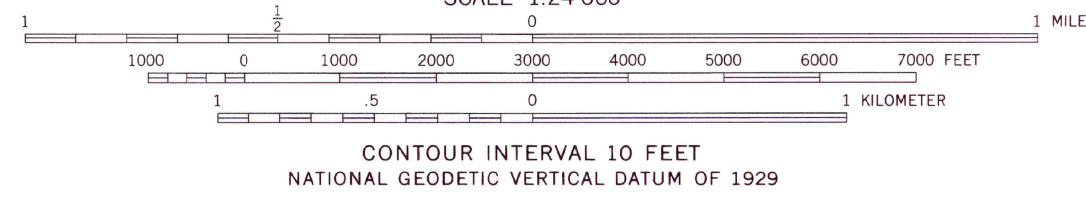
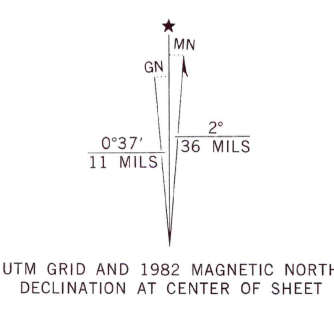
UNITED STATES
DEPARTMENT OF THE INTERIOR
GEOLOGICAL SURVEY

SIMS CHAPEL QUADRANGLE
ALABAMA
7.5 MINUTE SERIES (TOPOGRAPHIC)
NW/4 CITRONELLE 15' QUADRANGLE



Mapped, edited, and published by the Geological Survey

Control by USGS, NOS/NOAA, and Alabama Geodetic Survey
Topography by photogrammetric methods from aerial photographs taken 1976. Field checked 1977. Map edited 1982
Projection and 10,000-foot grid ticks: Alabama coordinate system, west zone (transverse Mercator)
1000-meter Universal Transverse Mercator grid, zone 16 1927 North American Datum
To place on the predicted North American Datum 1983 move the projection lines 16 meters south and 1 meter east as shown by dashed corner ticks
Fine red dashed lines indicate selected fence and field lines where generally visible on aerial photographs. This information is unchecked



CONTOUR INTERVAL 10 FEET
NATIONAL GEODETIC VERTICAL DATUM OF 1929



ROAD CLASSIFICATION
Primary highway, hard surface
Secondary highway, hard surface
Light-duty road, hard or improved surface
Unimproved road
Interstate Route
U. S. Route
State Route

SIMS CHAPEL, ALA.
NW/4 CITRONELLE 15' QUADRANGLE
N3107.5-W8807.5/7.5

1982
DMA 3346 II NW-SERIES V844

THIS MAP COMPLIES WITH NATIONAL MAP ACCURACY STANDARDS
FOR SALE BY U. S. GEOLOGICAL SURVEY, RESTON, VIRGINIA 22092
A FOLDER DESCRIBING TOPOGRAPHIC MAPS AND SYMBOLS IS AVAILABLE ON REQUEST