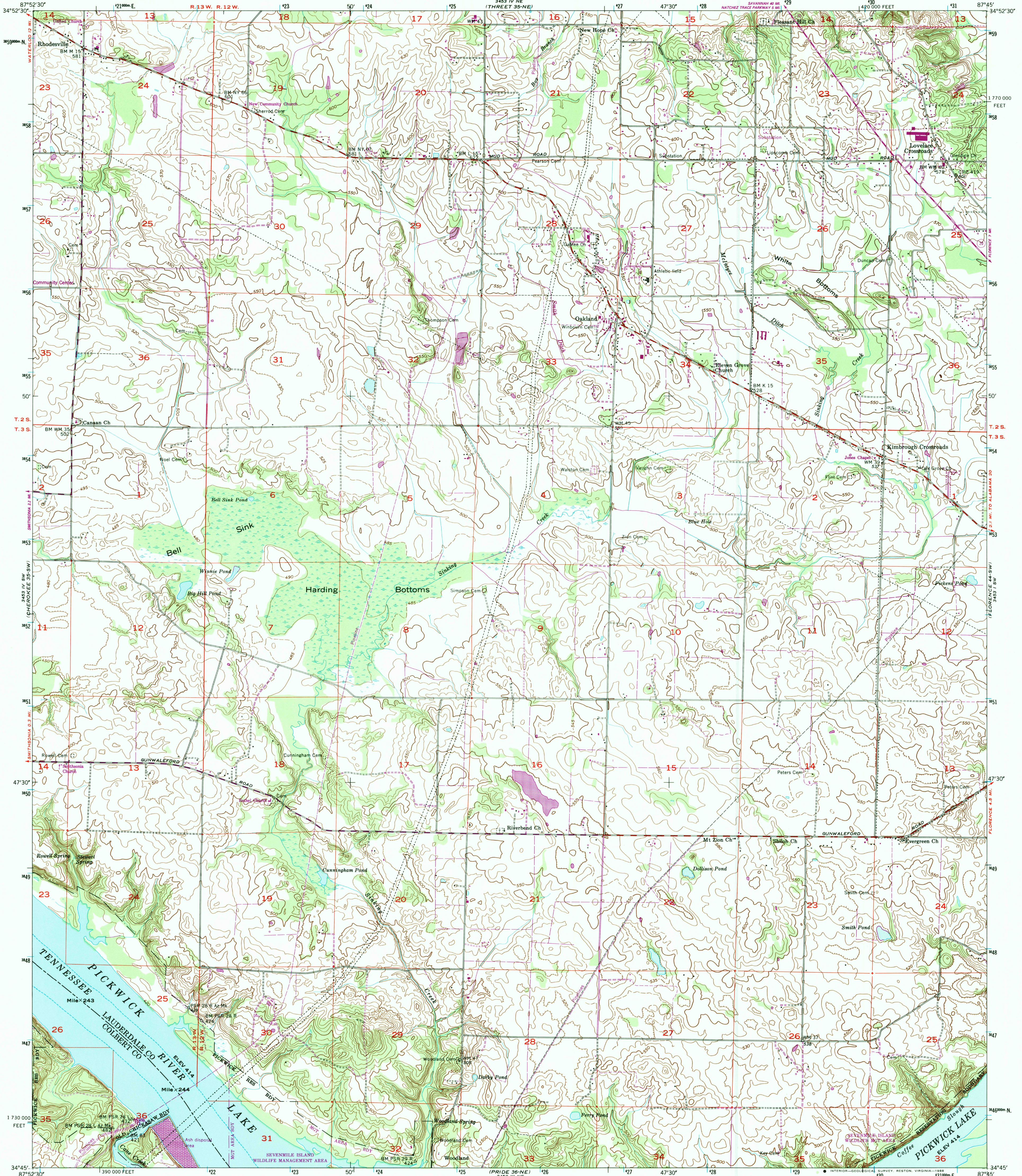


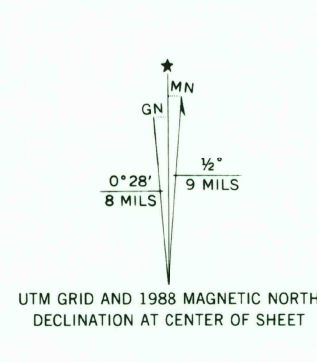
UNITED STATES  
DEPARTMENT OF THE INTERIOR  
GEOLOGICAL SURVEY

UNITED STATES  
TENNESSEE VALLEY AUTHORITY  
MAPS AND SURVEYS DEPARTMENT

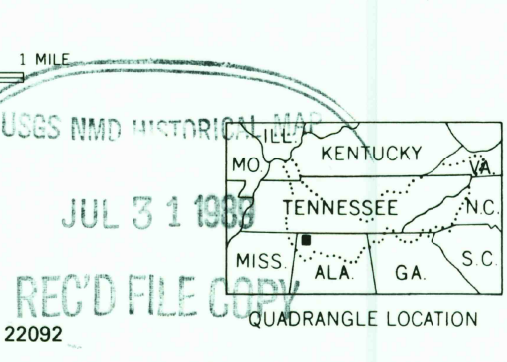
SINKING CREEK QUADRANGLE  
ALABAMA  
7.5 MINUTE SERIES (TOPOGRAPHIC) 35-SE



Mapped and edited by Tennessee Valley Authority  
Published by the Geological Survey  
Control by NOS/NOAA, USGS, and TVA  
Topography by TVA by photogrammetric methods using aerial  
photographs taken 1950. Map field checked by TVA, 1954  
Polyconic projection, 10,000-foot grid ticks based on Alabama  
coordinate system, west zone  
1000-meter Universal Transverse Mercator grid ticks,  
Zone 16, shown in blue. 1927 North American Datum  
To place on the predicted North American Datum 1983  
move the projection lines 8 meters south and  
2 meters east as shown by dashed corner ticks



THIS MAP COMPLIES WITH NATIONAL MAP ACCURACY STANDARDS  
FOR SALE BY U.S. GEOLOGICAL SURVEY, DENVER, COLORADO 80225, OR RESTON, VIRGINIA 22092  
AND U.S. TENNESSEE VALLEY AUTHORITY, CHATTANOOGA, TENN. 37401  
A FOLDER DESCRIBING TOPOGRAPHIC MAPS AND SYMBOLS IS AVAILABLE ON REQUEST



ROAD CLASSIFICATION (TVA 35-SE)  
Primary highway, all weather, hard surface  
Secondary highway, all weather, hard surface  
Light-duty road, all weather, improved surface  
Unimproved road, fair or dry weather  
Interstate Route  
U. S. Route  
State Route

SINKING CREEK, ALA.  
34087-G7-TF-024  
1954  
PHOTOREVISED 1988  
DMA 3453 IV SE-SERIES V844

Revisions shown in purple and woodland compiled by  
the Tennessee Valley Authority from aerial photographs  
taken 1986 and other sources. This information not  
field checked. Map edited 1988