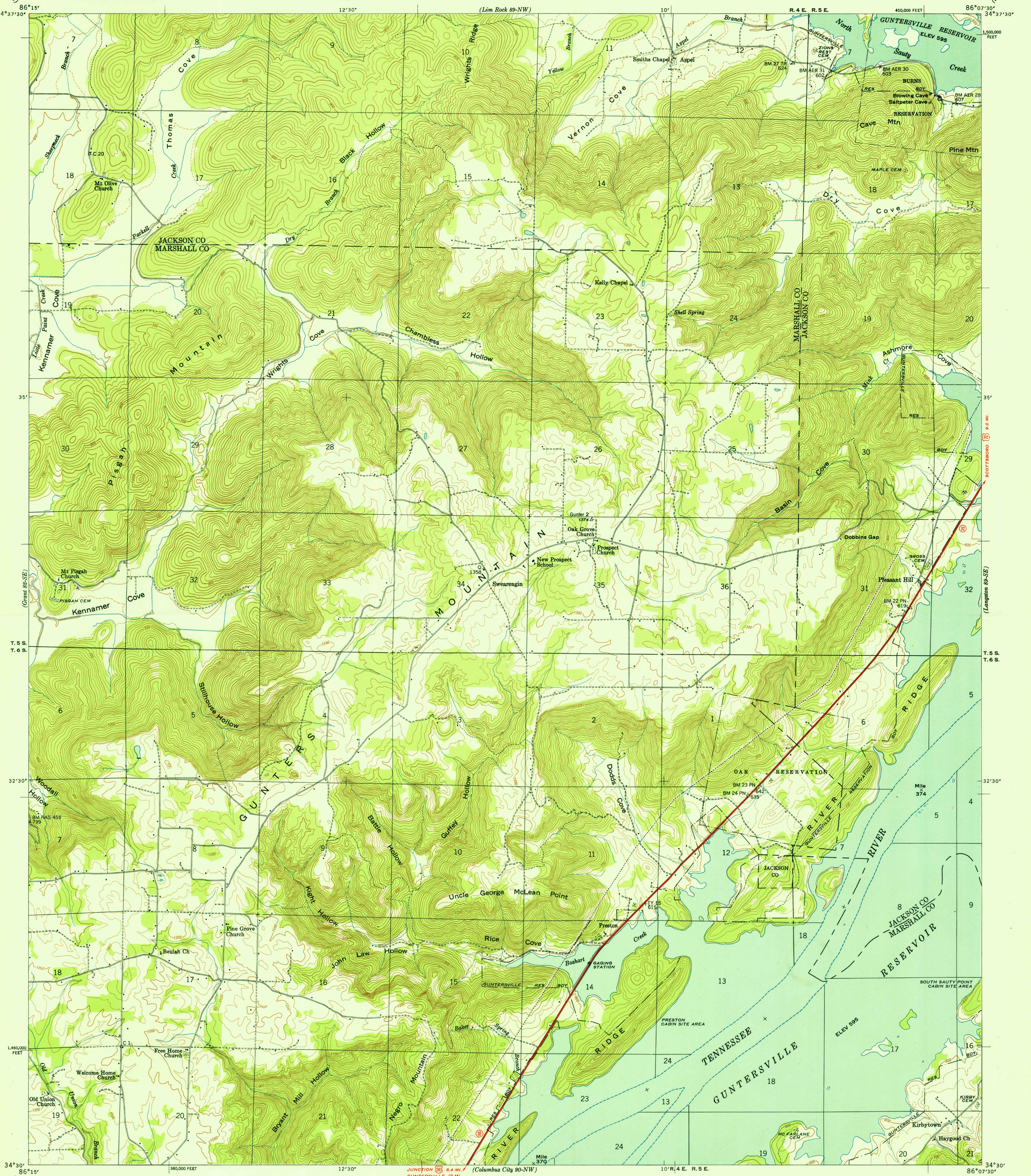


(Scottsboro 89-NE)



Control by USC&GS, USGS, and TVA
Topography by USGS and TVA from aerial
photographs by stereophotogrammetric methods
Field examination by Tennessee Valley Authority, 1947
Maps distributed by the Geological Survey

THIS MAP COMPLIES WITH NATIONAL MAP ACCURACY STANDARDS

TRUE NORTH
MAGNETIC NORTH

3°

APPROXIMATE MEAN
DECLINATION 1950

SCALE 1:24000

The graphic scale bar consists of three horizontal segments. The top segment is labeled '1' at the left end and '1 MILE' at the right end, with a '0' mark in the middle. The middle segment is labeled '1000', '0', '1000', '2000', '3000', '4000', '5000', '6000', and '7000 FEET'. The bottom segment is labeled '1', '0.5', '0', and '1 KILOMETER'.

Contour interval 20 feet
Occasional 10 foot contours shown by broken lines
Datum is mean sea level

Polyconic projection. 1927 North American datum
10,000 foot grid based on Alabama (East)
rectangular coordinate system

ROUTES USUALLY TRAVELED
 HARD, IMPERVIOUS SURFACES _____
 OTHER SURFACE IMPROVEMENTS _____
 (241) U. S. ROUTE (32) STATE ROUTE

SWEARENGIN, ALA.
89-SW
Edition of 1950
N3430-W8607.5/7.5

AUG 1 1950

(Grove Oak 90-NE)

HISTORICAL