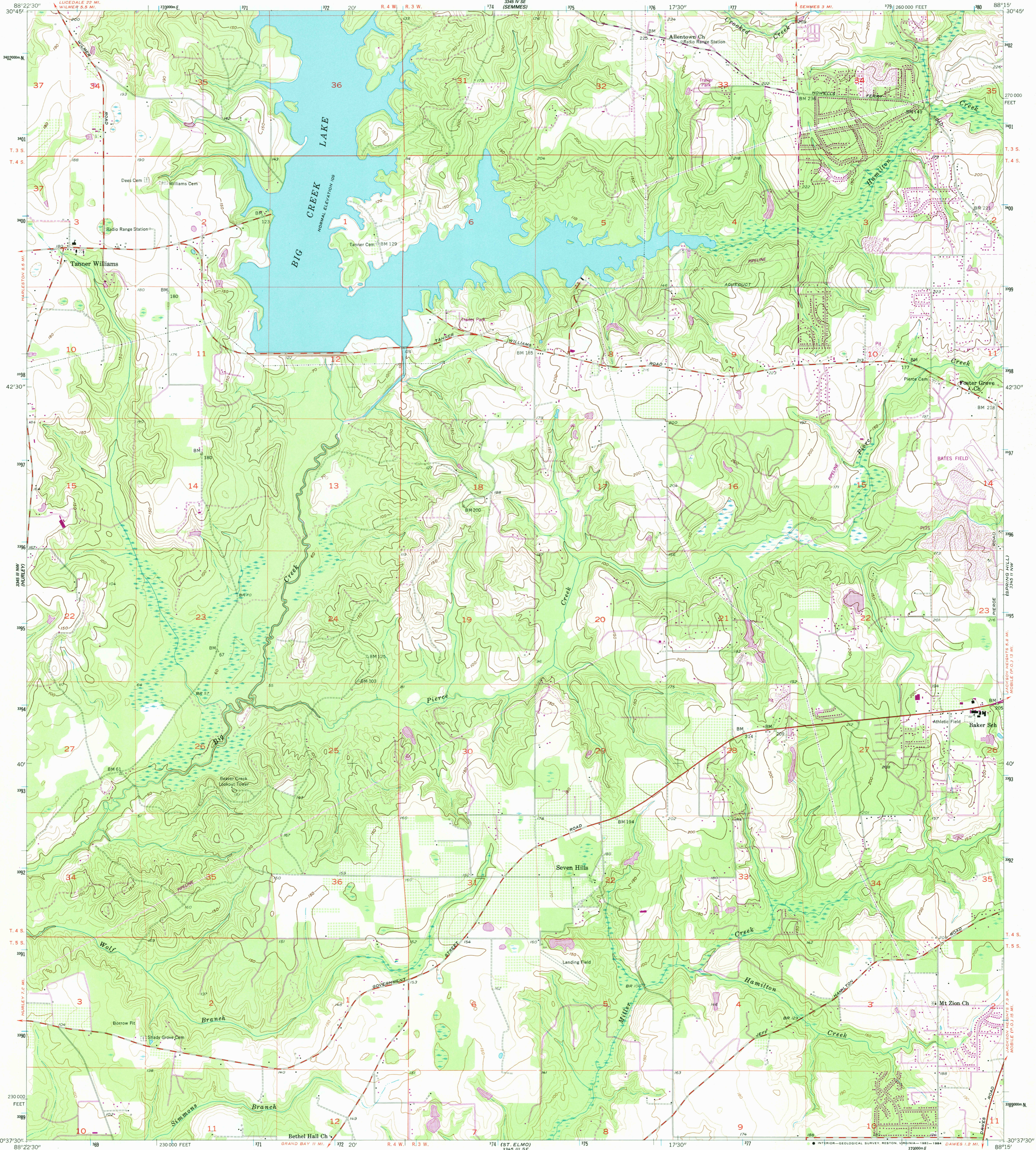


348° NW
348° 11' 30" W

UNITED STATES
DEPARTMENT OF THE INTERIOR
GEOLOGICAL SURVEY

TANNER WILLIAMS QUADRANGLE
ALABAMA—MOBILE CO.
7.5 MINUTE SERIES (TOPOGRAPHIC)
NE/4 HURLEY 15' QUADRANGLE

348° SW
348° 11' 30" W



18° 16' NW
348° 11' 30" W

Mapped, edited, and published by the Geological Survey

Control by USGS, USC&GS, and Alabama Geodetic Survey

Topography from aerial photographs by Kelsh plotter

Aerial photographs taken 1955. Field check 1957

Polycyclic projection. 1927 North American datum

10,000-foot grid based on Alabama coordinate system, west zone

1000-meter Universal Transverse Mercator grid ticks, zone 16, shown in blue

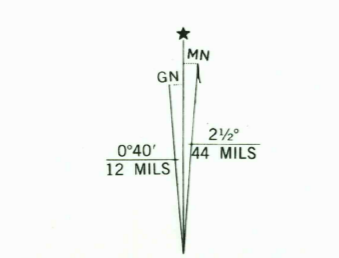
To place on the predicted North American Datum 1983

move the projection lines 17 meters south and

2 meters east as shown by dashed corner ticks

Revisions shown in purple compiled from aerial photographs taken 1981

and other sources. This information not field checked. Map edited 1982



UTM GRID AND 1982 MAGNETIC NORTH
DECLINATION AT CENTER OF SHEET



SCALE 1:24,000

CONTOUR INTERVAL 10 FEET
NATIONAL GEODETIC VERTICAL DATUM OF 1929



ALABAMA
QUADRANGLE LOCATION

RETURN TO:
NHD HISTORICAL MAP ARCHIVES
USGS NATIONAL CENTER, NS-522
RESTON, VA 22092

ROAD CLASSIFICATION

Heavy-duty	Light-duty
Medium-duty	Unimproved dirt

TANNER WILLIAMS, ALA.

NE/4 HURLEY 15' QUADRANGLE

N3037.5—W8815/7.5

1957
PHOTOREVISED 1982

DMA 3345 III NE—SERIES V844

THIS MAP COMPLIES WITH NATIONAL MAP ACCURACY STANDARDS
FOR SALE BY U. S. GEOLOGICAL SURVEY, RESTON, VIRGINIA 22092
A FOLDER DESCRIBING TOPOGRAPHIC MAPS AND SYMBOLS IS AVAILABLE ON REQUEST

348° SW
348° 11' 30" W

348° SW
348° 11' 30" W

348° SW
348° 11' 30" W

348° SW
348° 11' 30" W

348° SW
348° 11' 30" W