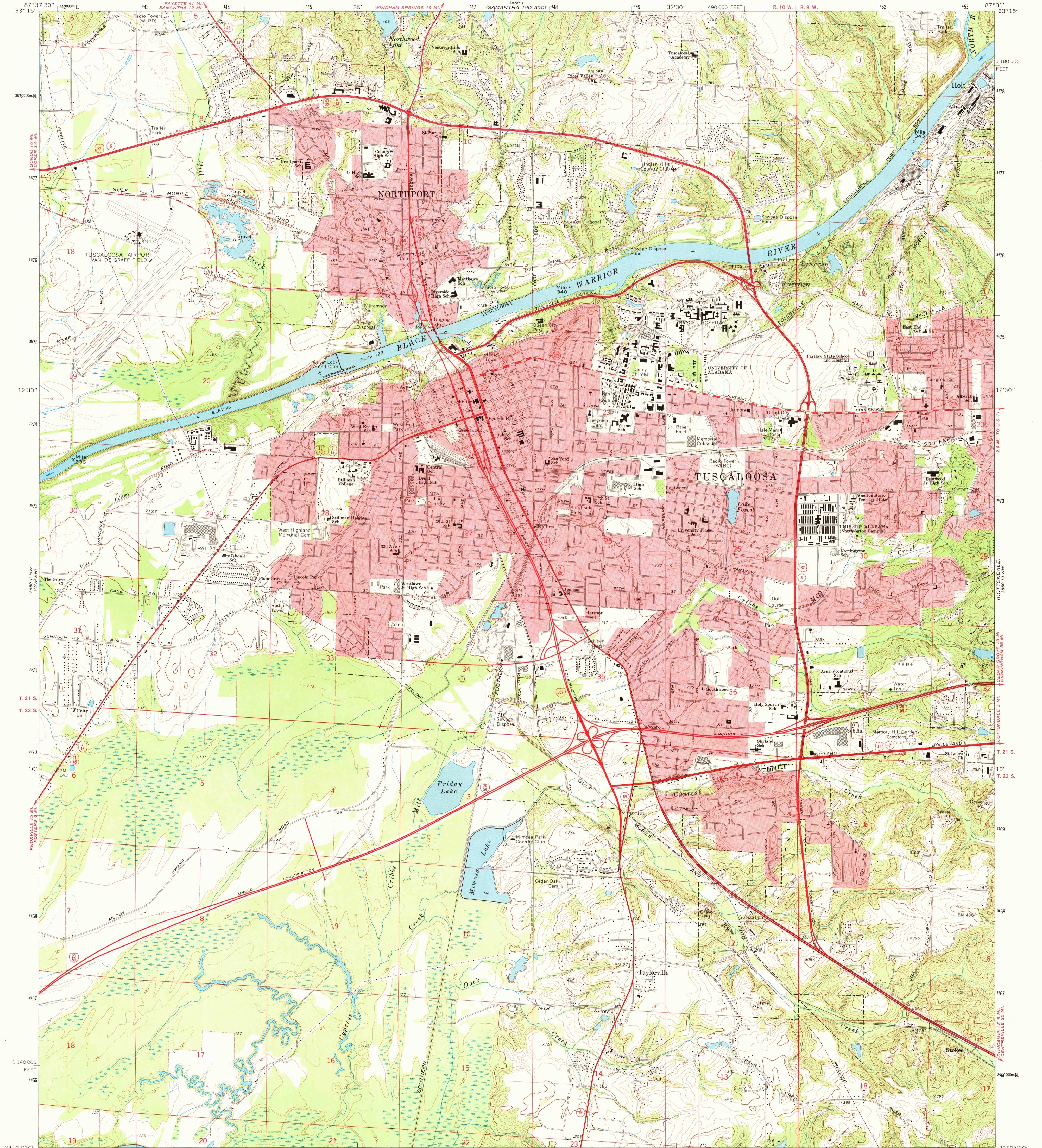
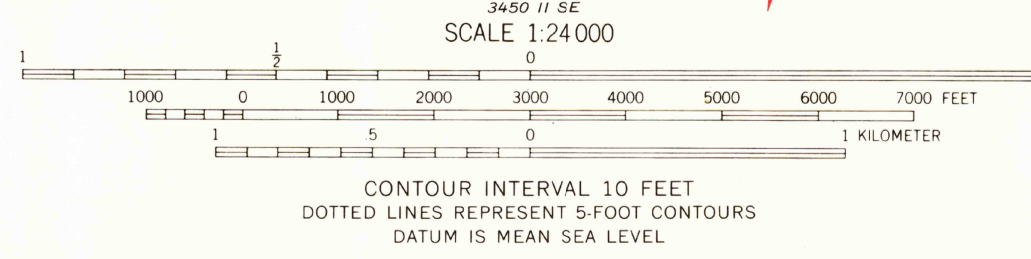
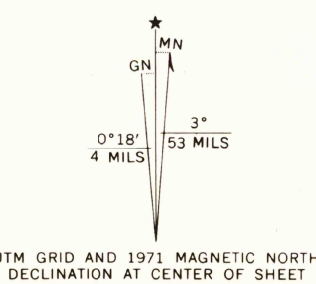


UNITED STATES  
DEPARTMENT OF THE INTERIOR  
GEOLOGICAL SURVEY

TUSCALOOSA QUADRANGLE  
ALABAMA—TUSCALOOSA CO.  
7.5 MINUTE SERIES (TOPOGRAPHIC)  
NE/4 TUSCALOOSA 15' QUADRANGLE



Mapped, edited, and published by the Geological Survey  
Control by USGS, and USC&GS  
Topography by photogrammetric methods from aerial photographs  
taken 1966. Field checked 1971  
Polyconic projection. 1927 North American datum  
10,000-foot grid based on Alabama coordinate system, west zone  
1000-meter Universal Transverse Mercator grid ticks, zone 16,  
shown in blue  
Fine red dashed lines indicate selected fence and field lines where  
generally visible on aerial photographs. This information is unchecked  
Red tint indicates areas in which only landmark buildings are shown



ROAD CLASSIFICATION	
Primary highway, hard surface	Light-duty road, hard or improved surface
Secondary highway, hard surface	Unimproved road
Interstate Route	U. S. Route
	State Route

USGS  
HISTORICAL FILE  
TOPOGRAPHIC DIVISION

TUSCALOOSA, ALA.  
NE/4 TUSCALOOSA 15' QUADRANGLE  
N3307.5—W8730.7/7.5

1971

AMS 3450 II NE—SERIES V844

THIS MAP COMPLIES WITH NATIONAL MAP ACCURACY STANDARDS  
FOR SALE BY U. S. GEOLOGICAL SURVEY, WASHINGTON, D. C. 20242  
A FOLDER DESCRIBING TOPOGRAPHIC MAPS AND SYMBOLS IS AVAILABLE ON REQUEST