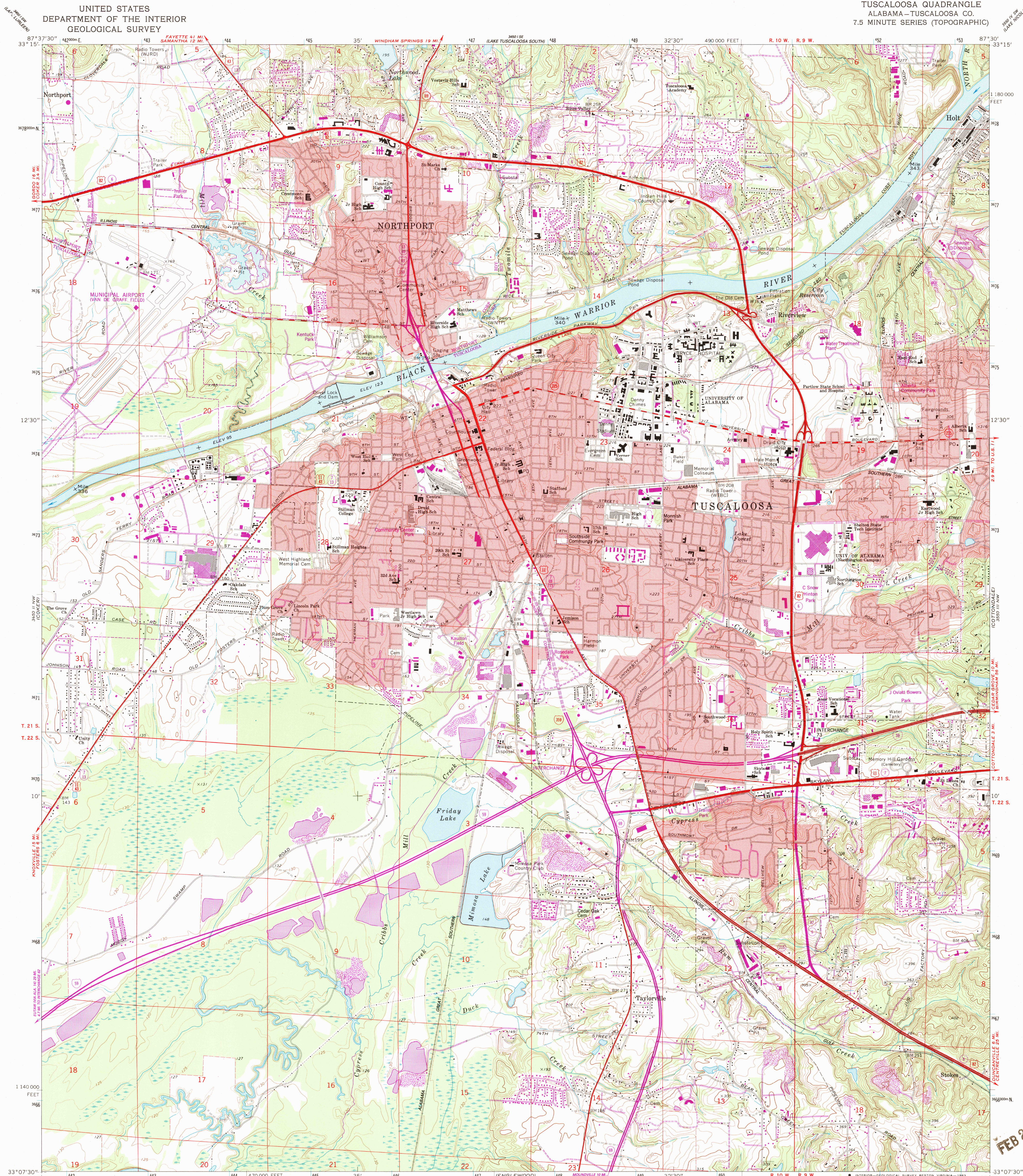


UNITED STATES
DEPARTMENT OF THE INTERIOR
GEOLOGICAL SURVEY

TUSCALOOSA QUADRANGLE
ALABAMA—TUSCALOOSA CO.
7.5 MINUTE SERIES (TOPOGRAPHIC)



Mapped, edited, and published by the Geological Survey
Control by USGS and NOS/NOAA

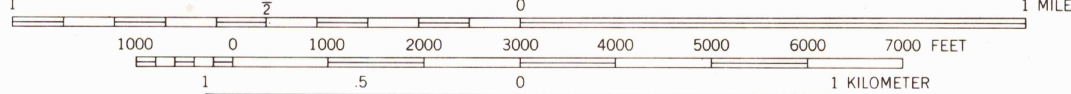
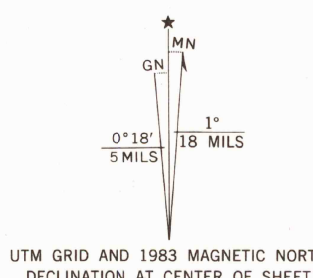
Topography by photogrammetric methods from aerial photographs
taken 1966. Field checked 1971

Polyconic projection. 10,000-foot grid ticks based on Alabama
coordinate system, west zone. 1000-meter Universal Transverse
Mercator grid ticks, zone 16, shown in blue. 1927 North
American Datum. To place on the predicted North American
Datum 1983 move the projection lines 11 meters south
and 1 meter east as shown by dashed corner ticks

Fine red dashed lines indicate selected fence and field lines where
generally visible on aerial photographs. This information is unchecked

Red tint indicates areas in which only landmark buildings are shown

Revisions shown in purple and woodland compiled from aerial
photographs taken 1981 and other sources. This information
not field checked. Map edited 1983



CONTOUR INTERVAL 10 FEET
DOTTED LINES REPRESENT 5-FOOT CONTOURS
NATIONAL GEODETIC VERTICAL DATUM OF 1929

THIS MAP COMPLIES WITH NATIONAL MAP ACCURACY STANDARDS
FOR SALE BY U.S. GEOLOGICAL SURVEY, RESTON, VIRGINIA 22092
A FOLDER DESCRIBING TOPOGRAPHIC MAPS AND SYMBOLS IS AVAILABLE ON REQUEST



ROAD CLASSIFICATION	
Primary highway, hard surface	Light-duty road, hard or improved surface
Secondary highway, hard surface	Unimproved road
Interstate Route	U. S. Route
	State Route

TUSCALOOSA, ALA.

33087-85-TF-024

1971

PHOTOREVISED 1983
DMA 5450 II NE—SERIES V844

FEB 22 1984