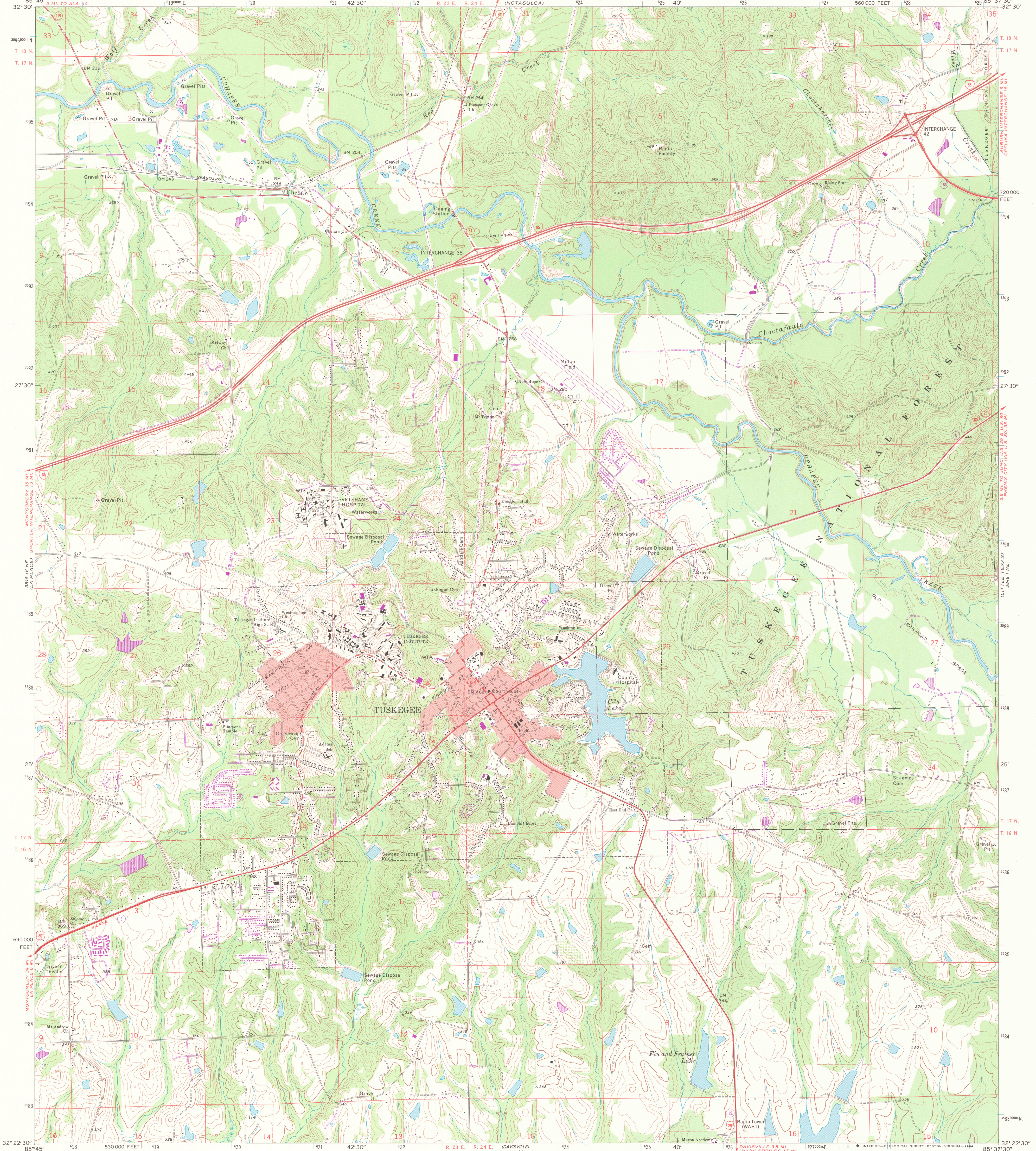


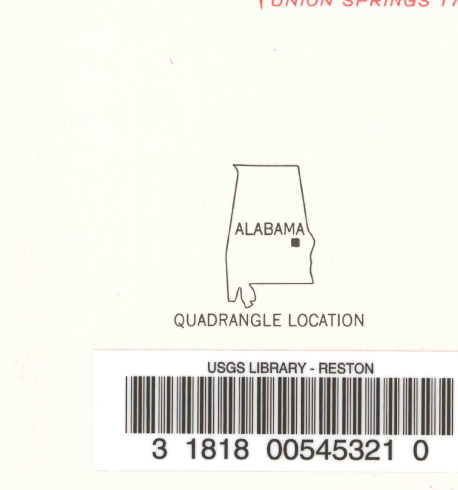
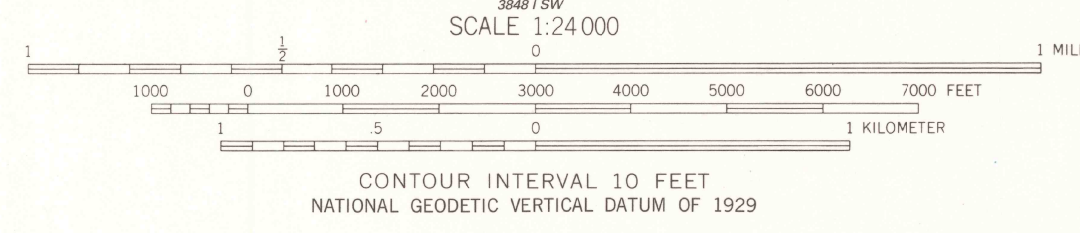
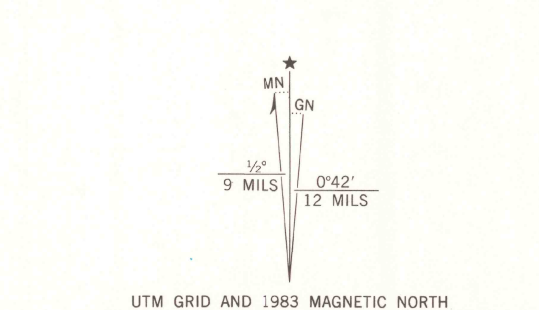
388 1/2 SE (CARROLLVILLE)  
388 1/2 SE (LOACHAPOKA)  
388 1/2 SE (LITTLE TEXAS)  
388 1/2 SE (MADISON)  
388 1/2 SE (MONTGOMERY)  
388 1/2 SE (DAVISVILLE)

UNITED STATES  
DEPARTMENT OF THE INTERIOR  
GEOLOGICAL SURVEY

TUSKEGEE QUADRANGLE  
ALABAMA—MACON CO.  
7.5 MINUTE SERIES (TOPOGRAPHIC)



Mapped, edited, and published by the Geological Survey  
Control by USGS and NOS/NOAA  
Topography by photogrammetric methods from aerial photographs taken 1969. Field checked 1971.  
Polyconic projection. 10,000-foot grid ticks based on Alabama coordinate system, east zone. 1000-meter Universal Transverse Mercator grid ticks, zone 16, shown in blue. 1927 North American Datum. To place on the predicted North American Datum 1983 move the projection lines 12 meters south and 5 meters west as shown by dashed corner ticks.  
Red tint indicates areas in which only landmark buildings are shown.  
Fine red dashed lines indicate selected fence and field lines where generally visible on aerial photographs. This information is unchecked. There may be private inholdings within the boundaries of the National or State reservations shown on this map.



**ROAD CLASSIFICATION**

Primary highway, hard surface	Light-duty road, hard or improved surface
Secondary highway, hard surface	Unimproved road
○ Interstate Route	□ U. S. Route
	○ State Route

U.S. GEOLOGICAL SURVEY  
RESTON, VA.  
OCT 19 1984  
LIBRARY

TUSKEGEE, ALA.  
32085-D6-TF-024  
1971  
PHOTOREVISED 1983  
DMA 3848 I NW—SERIES V844

THIS MAP COMPLIES WITH NATIONAL MAP ACCURACY STANDARDS  
FOR SALE BY U. S. GEOLOGICAL SURVEY, RESTON, VIRGINIA 22092  
A FOLDER DESCRIBING TOPOGRAPHIC MAPS AND SYMBOLS IS AVAILABLE ON REQUEST