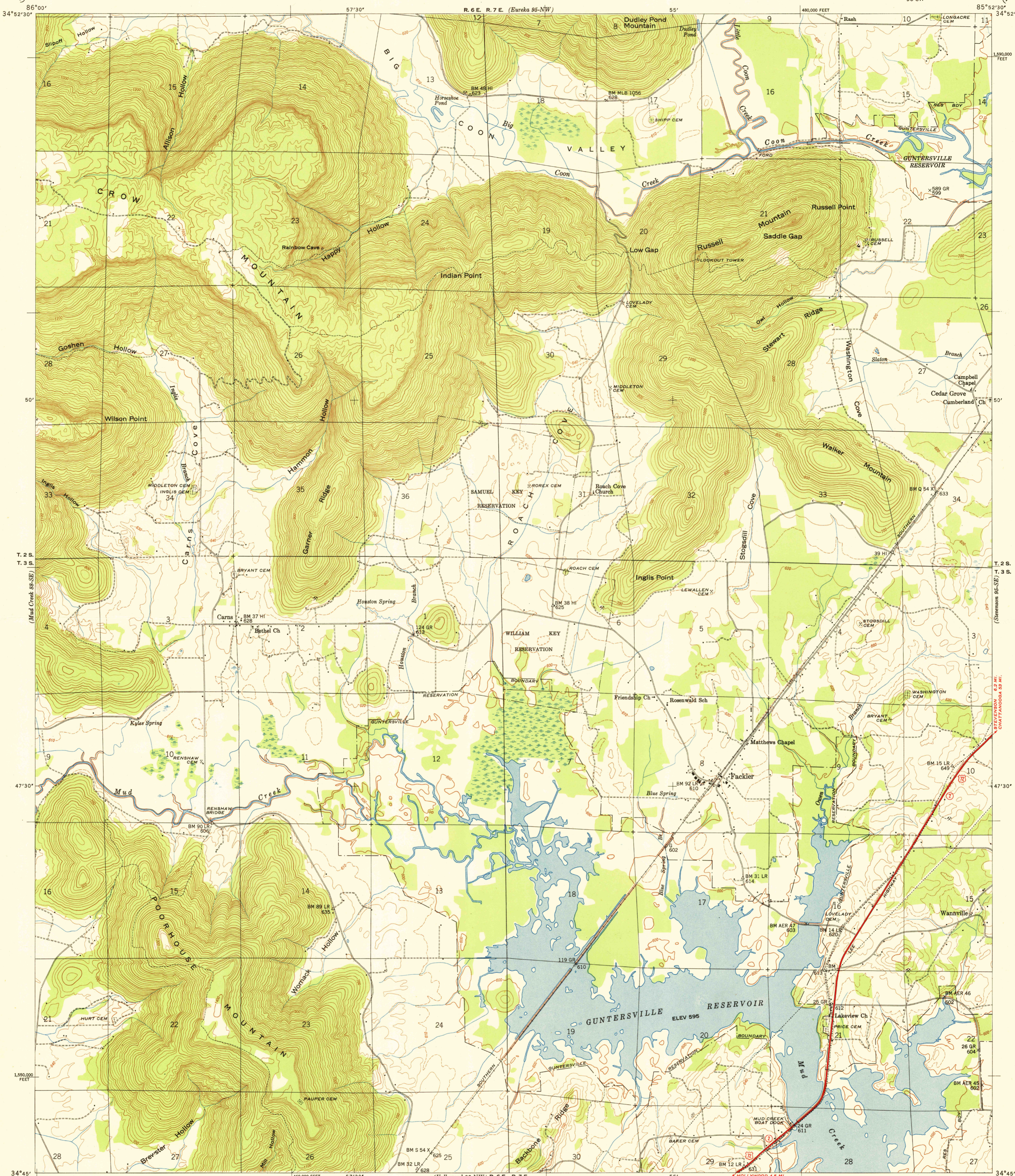
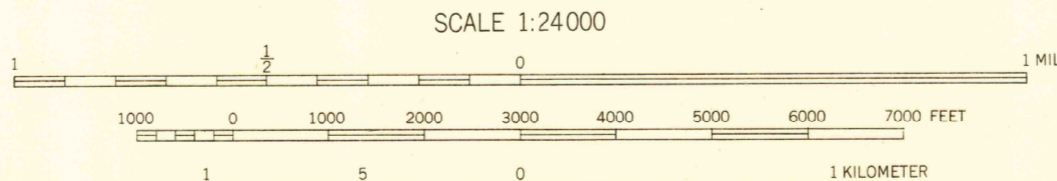


U. S. G. S.
FILE COPY
Inspection and Editing.



Control by USC&GS, USGS, and TVA
Topography by USGS and TVA from aerial
photographs by stereophotogrammetric methods
Field examination by Tennessee Valley Authority, 1947
Maps distributed by the Geological Survey

TRUE NORTH
MAGNETIC NORTH
APPROXIMATE MEAN
DECLINATION 1950



Contour interval 20 feet
Occasional 10 foot contours shown by broken lines
Datum is mean sea level

Polyconic projection, 1927 North American datum
10,000 foot grid based on Alabama (East)
rectangular coordinate system

HISTORICAL ROUTES USUALLY TRAVELED
HARD IMPERVIOUS SURFACES
OTHER SURFACE IMPROVEMENTS
U. S. ROUTE STATE ROUTE

U. S. G. S.
FILE COPY
Inspection and Editing
Topographic Division

WANNVILLE, ALA.
95-SW
Edition of 1950
N3445-W8552.5/7.5