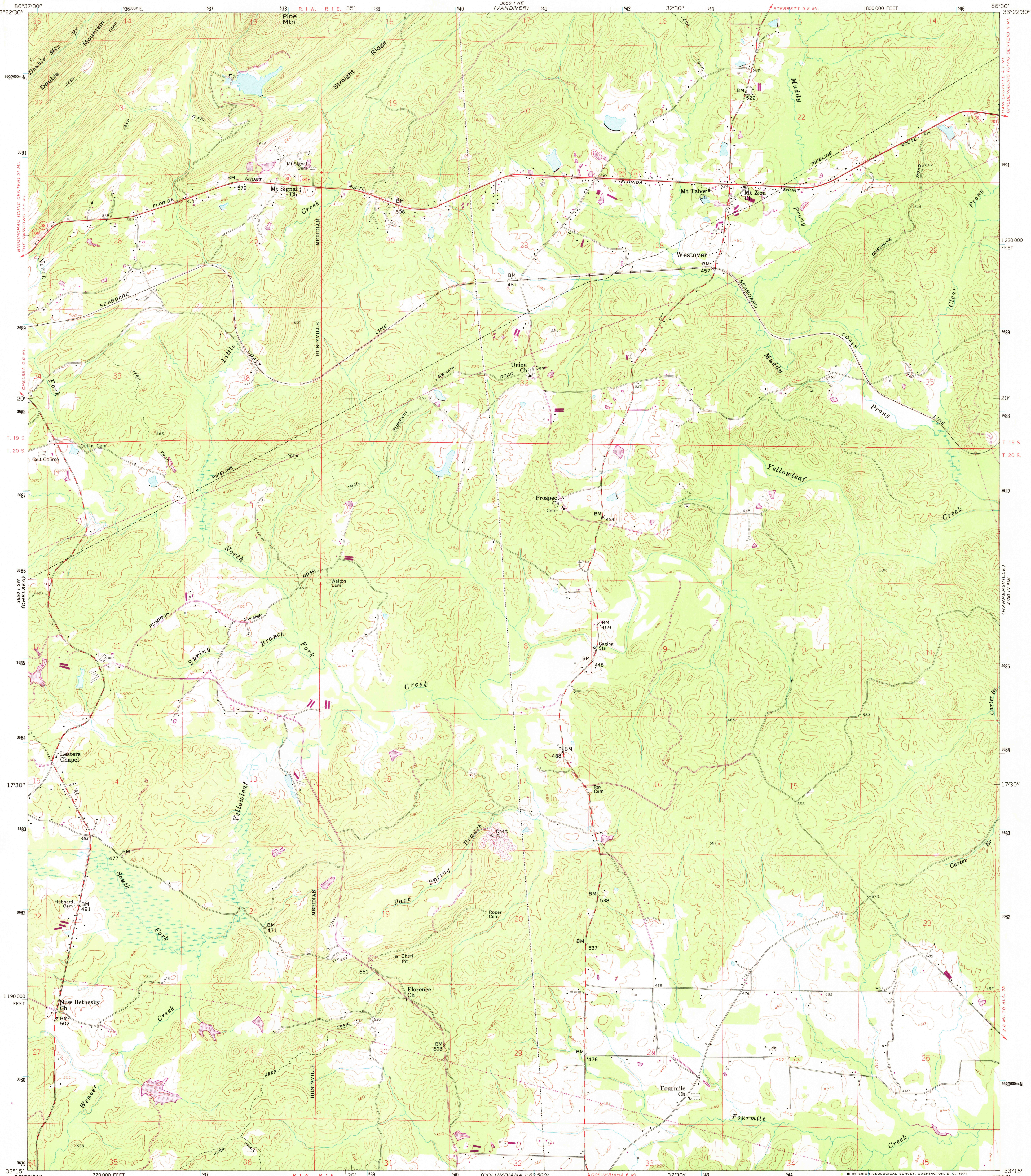
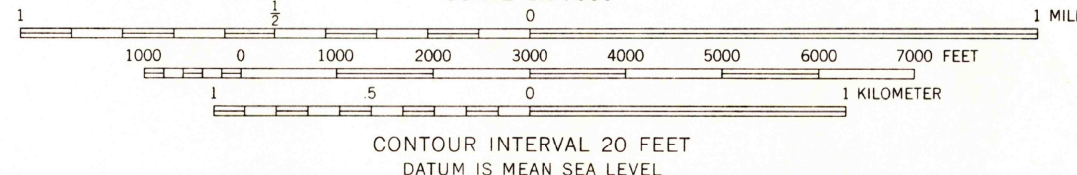
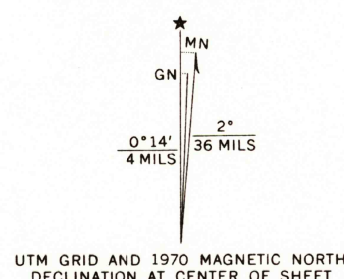


UNITED STATES
DEPARTMENT OF THE INTERIOR
GEOLOGICAL SURVEY

WESTOVER QUADRANGLE
ALABAMA—SHELBY CO.
7.5 MINUTE SERIES (TOPOGRAPHIC)
SE/4 VANDIVER 15' QUADRANGLE



Maped, edited, and published by the Geological Survey
Control by USGS, USC&GS, and Alabama Geodetic Survey
Topography from aerial photographs by photogrammetric methods
Aerial photographs taken 1957. Field check 1959
Polyconic projection. 1927 North American datum
10,000-foot grid based on Alabama coordinate system, west zone
1000-meter Universal Transverse Mercator grid ticks,
zone 16, shown in blue
Revisions shown in purple compiled from aerial photographs
taken 1970. This information not field checked



ROAD CLASSIFICATION
Heavy-duty ——— Light-duty ———
Medium-duty ——— Unimproved dirt ———
U. S. Route ——— State Route ———

USGS
HISTORICAL FILE
TOPOGRAPHIC DIVISION

WESTOVER, ALA.
SE/4 VANDIVER 15' QUADRANGLE
N 3315—W 8630/7.5
1959
PHOTOREVISED 1970
AMS 3650 I SE—SERIES V844

THIS MAP COMPLIES WITH NATIONAL MAP ACCURACY STANDARDS
FOR SALE BY U. S. GEOLOGICAL SURVEY, WASHINGTON, D. C. 20242
A FOLDER DESCRIBING TOPOGRAPHIC MAPS AND SYMBOLS IS AVAILABLE ON REQUEST