

ROBERTSDALE 1:62,500

# PENSACOLA & VICINITY 1:25,000

WAR DEPARTMENT  
CORPS OF ENGINEERS, U. S. ARMY

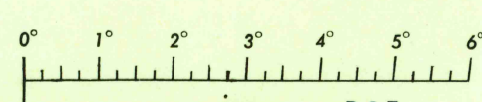
RESTRICTED

SECOND EDITION - AMS 2

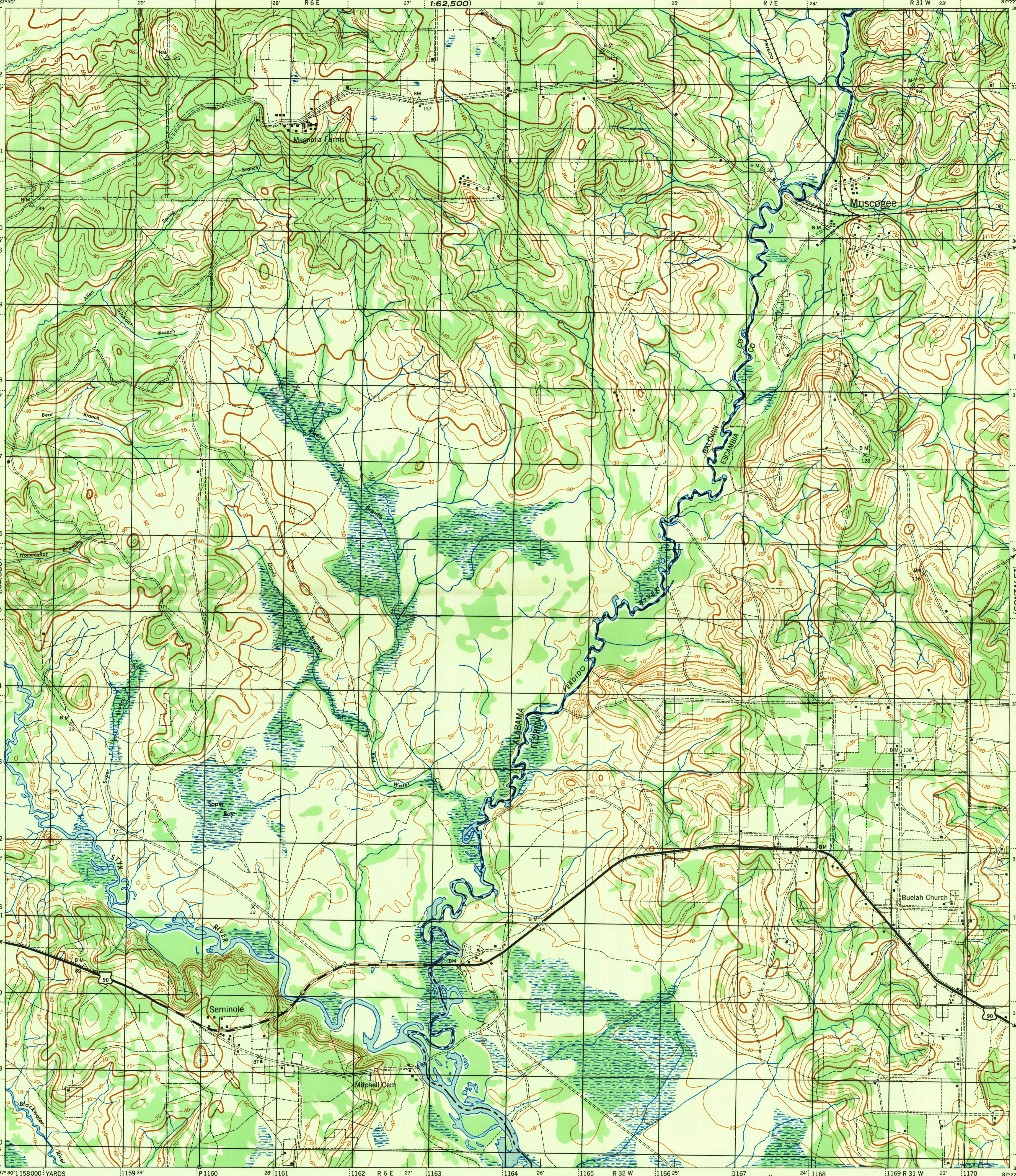
# MUSCOGEE QUADRANGLE

7 1/2 MINUTE SERIES

MUSCOGEE 1:62,500



(MUSCOGEE  
1:62,500)



5 Miles

T 5 S

799

798

797

796

795

794

793

792

791

790

789

788000 YARDS

30°37'30"

ROBERTSDALE (1:62,500)

ELBERTA

CANTONMENT 2.6 MI.

T 1 N

35°

CANTONMENT 4.5 MI.

(GONZALEZ)

34°

33°

33°

32°

T 1 S

31°

WEST PENSACOLA 9 MI.

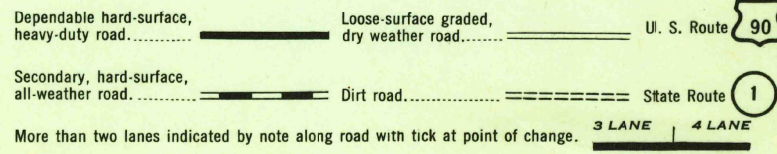
81000 YARDS

30°30'

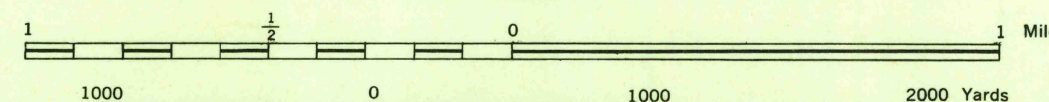
(WEST PENSACOLA)

First Edition 1926  
Second Edition (AMS-2) 1944  
Prepared under the direction of the Chief of Engineers, U.S. Army, by the Army Map Service, SX 1943.  
Compiled from U.S.E. Fire Control Maps, 1919,  
U.S.G.S. "Muscogee" Quadrangle, 1941,  
Aerial Photography and Photo Indices by A.A.A., U.S.D.A., 1940.  
Polyconic Projection, North American Datum 1927.

### ROAD CLASSIFICATION 1943



DECLINATION DIAGRAM FOR HARBOR DEFENSE GRID FOR CENTER OF SHEET  
1000 Yard Harbor Defense Grid, Pensacola area is indicated by dotted ticks outside the next line.



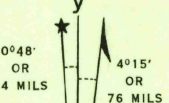
Scale 1:25,000 (PERDIDO BAY NORTH)

CONTOUR INTERVAL 10 FEET  
DATUM IS MEAN SEA LEVEL

## HISTORICAL FILES

ONE THOUSAND YARD GRID COMPUTED FROM "GRID SYSTEM FOR PROJECTIONS IN THE U. S. ZONE C. U. S. G. S. SPECIAL PUBLICATION NO. 50"  
THE LAST THREE DIGITS OF THE GRID NUMBERS ARE OMITTED.  
NOTE: OFFICERS USING THIS MAP WILL MARK HEREON CORRECTIONS AND ADDITIONS WHICH COME TO THEIR ATTENTION AND MAIL DIRECT TO THE CHIEF OF ENGINEERS, WASHINGTON, D. C.

(DO NOT REMOVE)



APPROXIMATE MEAN DECLINATION 1944 FOR CENTER OF SHEET  
ANNUAL MAGNETIC CHANGE 2" INCREASE  
Use diagram only to obtain numerical values. To determine magnetic north line, connect the pivot point "P" on the south edge of the map with the value of the angle between GRID NORTH and MAGNETIC NORTH, as plotted on the degree scale of the north edge of the map.

FILE COPY  
Not to be Removed from File

RESTRICTED

MUSCOGEE, ALA. - FLA.

88000 YARDS

6/44 SX

ARMY MAP SERVICE, U. S. ARMY, WASHINGTON, D. C., 10075  
1944

U.S. Army VA Topo Archive