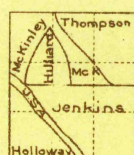


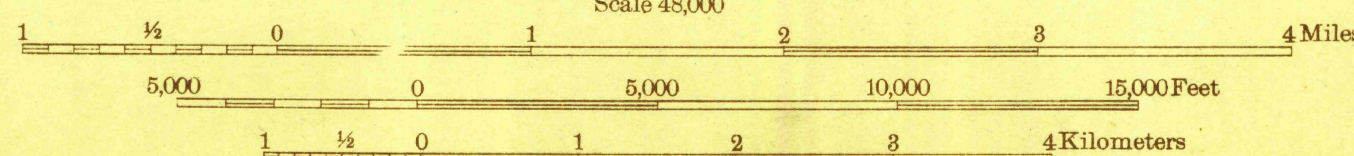
Advance sheet  
Subject to correction



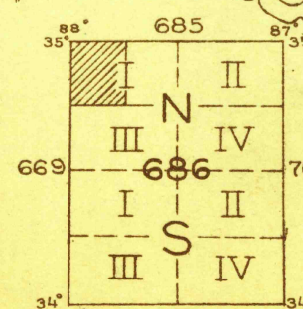
Topography by Corps of Engineers U. S. Army, B. A. Jenkins,  
W. K. McKinley, J. C. Hildard, E. V. Holloway, and W. C. Thompson  
Control in part by U. S. Coast and Geodetic Survey  
Surveyed in 1924



APPROXIMATE MEAN  
DECLINATION, 1924



Contour interval 20 feet  
Datum is mean sea level



HISTORICAL FILES  
DO NOT REMOVE  
FILE COPY Gravelly Springs, Ala.