



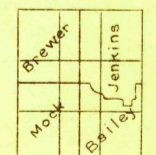
DEPARTMENT OF THE INTERIOR
U. S. GEOLOGICAL SURVEY

705-S-11-W/2
STATE OF ALABAMA
WALTER B. JONES
STATE GEOLOGIST

ALABAMA
MONTGOMERY QUADRANGLE

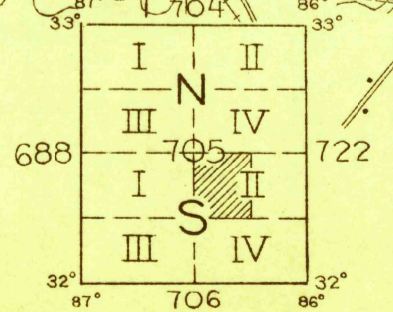


1:60,000 YARDS
Glenn S. Smith, Division Engineer
Topography by B.A. Jenkins, W.B. Brewer,
J.K. Bailey, and G.A. Mock
Control by U. S. Geological Survey
Surveyed in 1927



APPROXIMATE MEAN
DECLINATION, 1927

Scale 48,000
0 5,000 10,000 15,000 Feet
0 1 2 3 4 Kilometers
Contour interval 20 feet
Datum is mean sea level



Polyconic projection, North American datum
5000 yard grid based upon U. S. zone system, C
FILE COPY Montgomery Ala.
RETURN TO CENTRAL FILES
MONTGOMERY ALA.
FILES
(DO NOT REMOVE)