

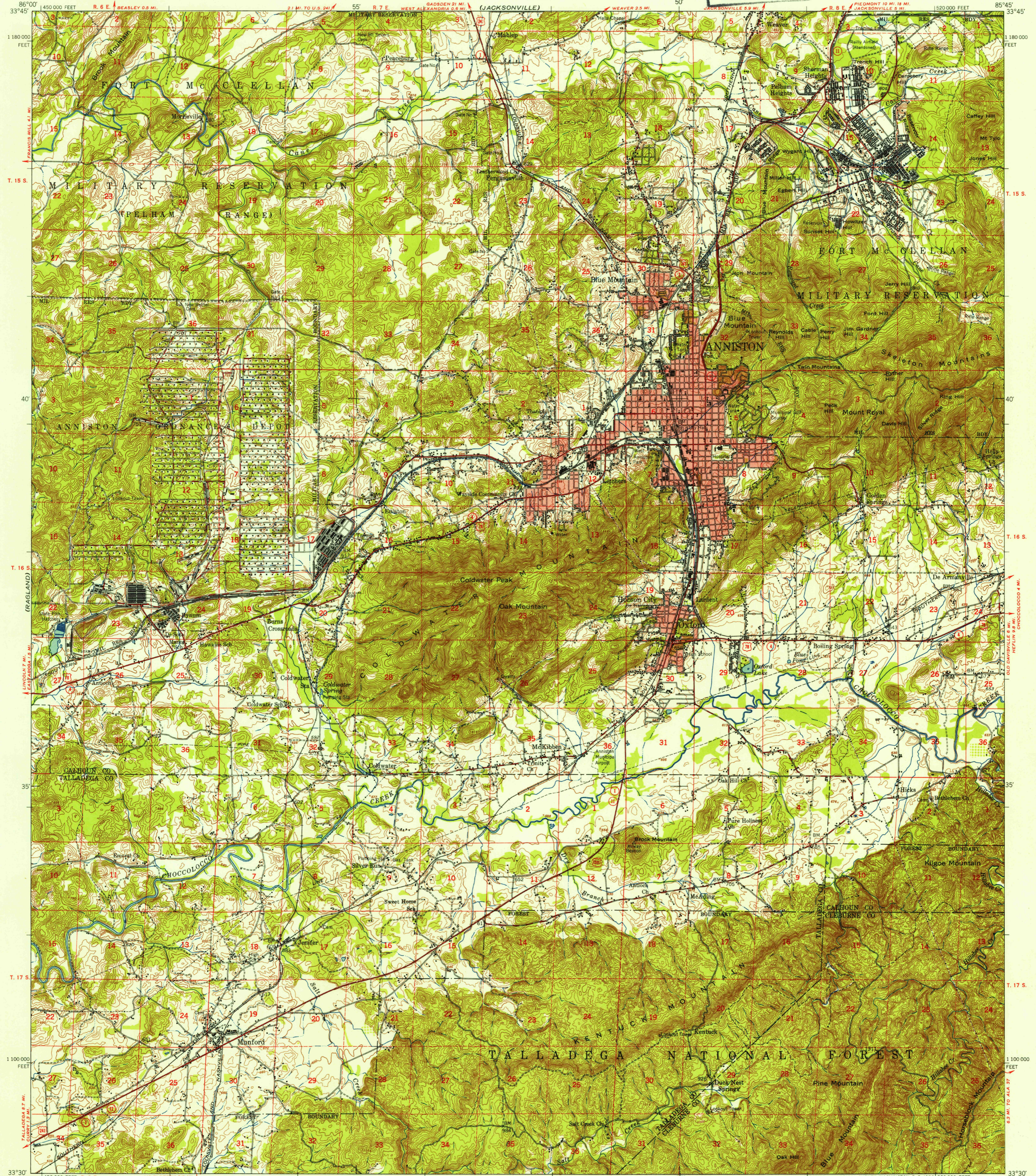
(STEELE)

UNITED STATES  
DEPARTMENT OF THE INTERIOR  
GEOLOGICAL SURVEY

UNITED STATES  
CORPS OF ENGINEERS

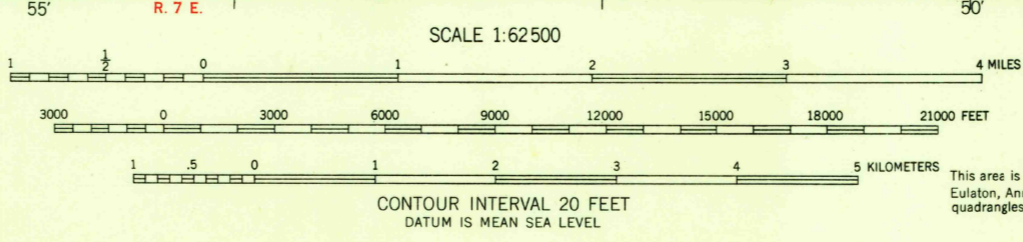
U.S.G.S.  
**FILE COPY**  
Inspection and Editing

ANNISTON QUADRANGLE  
ALABAMA  
15 MINUTE SERIES (TOPOGRAPHIC)



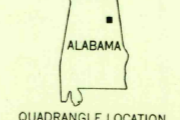
Mapped by the Army Map Service  
Published for civil use by the Geological Survey  
Control by USGS, USC&GS, and USCE  
Topography from aerial photographs by multiplex methods  
Aerial photographs taken 1946. Field revised 1950  
Polyconic projection. 1927 North American datum  
10,000-foot grid based on Alabama coordinate system  
east zone  
Red tint indicates areas in which only  
landmark buildings are shown  
No distinction is made between dwellings, barns,  
commercial and industrial buildings  
Dashed land lines indicate approximate locations  
Unchecked elevations are shown in brown

TRUE NORTH  
MAGNETIC NORTH  
APPROXIMATE MEAN  
DECLINATION 1950



ROAD CLASSIFICATION 1947  
Heavy-duty 4 LANE 16 LANE Light-duty   
Medium-duty 4 LANE 16 LANE Unimproved dirt USCS  
 U. S. Route State Route Historical File  
Topographic Division

THIS MAP COMPLIES WITH NATIONAL MAP ACCURACY STANDARDS  
FOR SALE BY U. S. GEOLOGICAL SURVEY, WASHINGTON 25, D. C.  
A FOLDER DESCRIBING TOPOGRAPHIC MAPS AND SYMBOLS IS AVAILABLE ON REQUEST



U.S.G.S.  
**FILE COPY**  
Inspection and Editing  
**HISTORICAL**

ANNISTON, ALA.  
N3330-W8545/15  
1950

SEP 24 1953  
3035