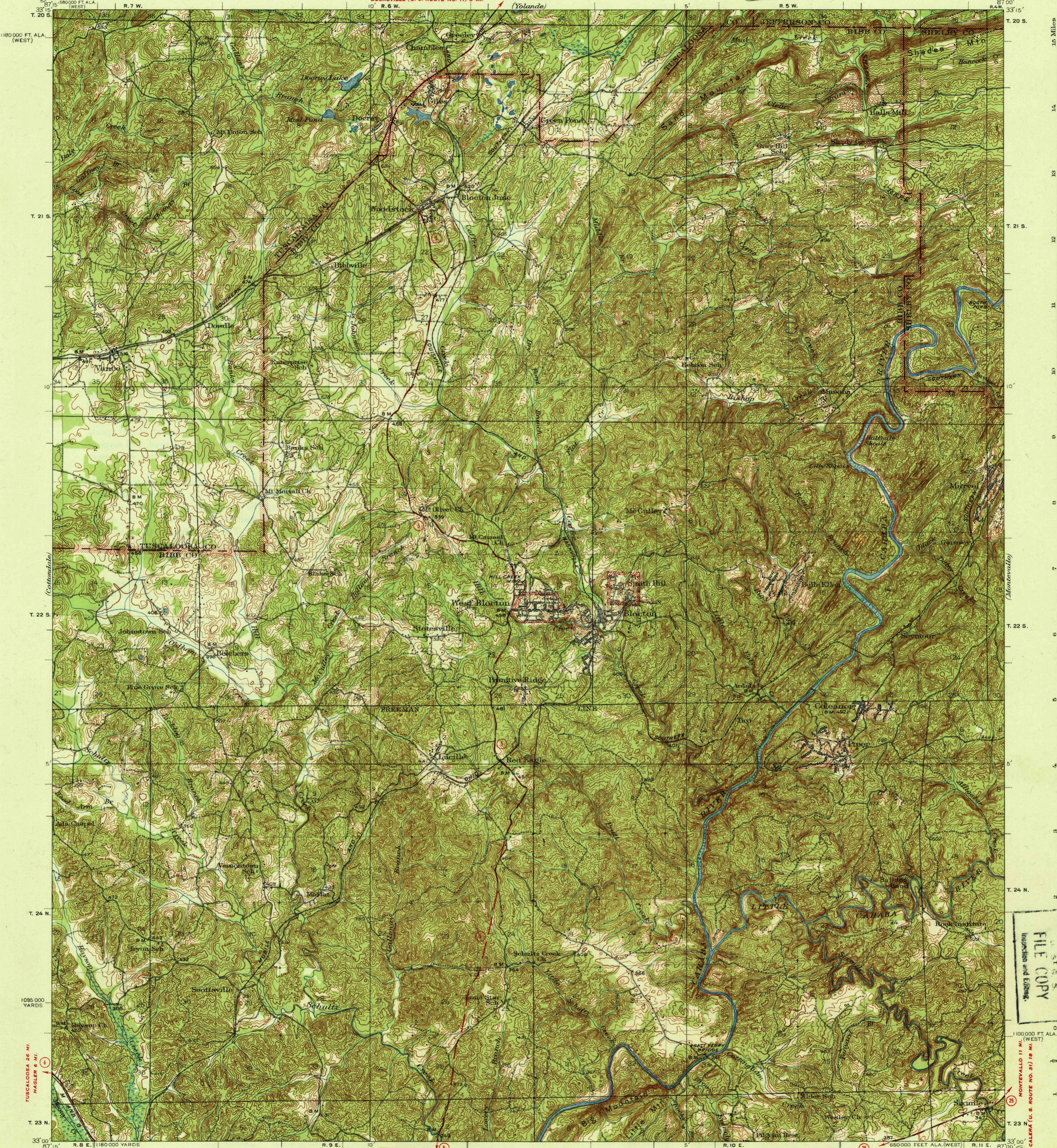


U. S. G. S.
FILE COPY
Inspection and Editing



Topography by Crawford Dickey, H.J. McMillen, W.A. Fisher, G.A. Mock, H.F. Ewing, and E.H. Cummings. Culture and drainage in part compiled from aerial photographs taken by Air Corps, U.S. Army, surveyed in 1930, 1931, 1933, and 1934.

Scale 62500
1 inch = 1 mile
5000 10000 15000 20000 Feet
1 2 3 4 5 Kilometers

650000 FEET ALA. (WEST)
CENTERVILLE 8 MI. (26)
MONTVALLO 11 MI. (25)
CALLERA (U. S. ROUTE NO. 37) 18 MI. (25)