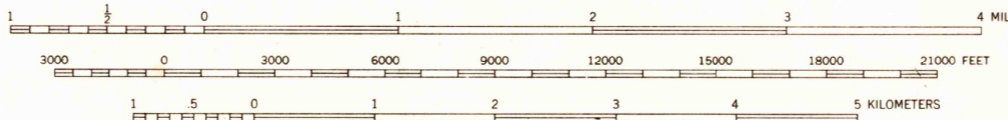


Mapped by the Army Map Service
Edited and published by the Geological Survey
Control by USC&GS and AMS
Topography from aerial photographs by multiplex methods
Aerial photographs taken 1946. Field check 1948
Polyconic projection. 1927 North American datum
10,000-foot grid based on Alabama coordinate system
east zone
No distinction is made between dwellings, barns,
commercial and industrial buildings



CONTOUR INTERVAL 20 FEET
DATUM IS MEAN SEA LEVEL

USGS
Historical File
Topographic Division

ROAD CLASSIFICATION
HEAVY-DUTY ALL WEATHER ROADS DRY WEATHER ROADS
Medium-duty LADE LANE Improved dirt
Loose-surface, graded, or narrow hard-surface Unimproved dirt
U. S. Route State Route

TRUE NORTH
MAGNETIC NORTH
APPROXIMATE MEAN
DECLINATION, 1948

THIS MAP COMPLIES WITH NATIONAL MAP ACCURACY STANDARDS
FOR SALE BY U. S. GEOLOGICAL SURVEY, WASHINGTON 25, D. C.
A FOLDER DESCRIBING TOPOGRAPHIC MAPS AND SYMBOLS IS AVAILABLE ON REQUEST

U.S.G.S.
FILE COPY
TOPOGRAPHIC DIVISION

BRUNDIDGE, ALA.
N3130-W8545/15
EDITION OF 1950

JUL 16 1963
1575