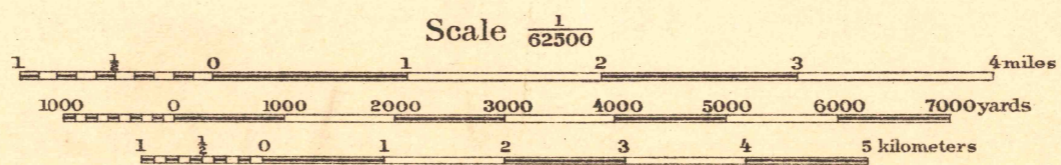


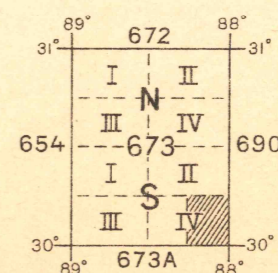
Field work and compilation under the direction of Col. W. M. Black, Corps of Engineers, U. S. A., Chief Engineer Officer, Eastern Division.
Field work by 2nd Lieut. Hughey S. Hemingway, C. A. C., U. S. A. Oct. - Dec. 1910.
Base map compiled from U. S. C. & G. S. Chart No. 188 and other available data.



Scale $\frac{1}{62500}$
Contour Interval 10 feet
Datum is mean sea level

FIVE THOUSAND YARD GRID COMPUTED FROM "GRID SYSTEM FOR PROGRESSIVE MAPS IN THE U. S." ZONE C, U. S. C. & G. S. SPECIAL PUBLICATION NO. 59. (THE LAST THREE DIGITS OF THE GRID NUMBERS ARE OMITTED)

NOTE: OFFICERS USING THIS MAP WILL MARK HEREON CORRECTIONS AND ADDITIONS WHICH COME TO THEIR ATTENTION AND MAIL DIRECT TO THE CHIEF OF ENGINEERS, WASHINGTON, D. C.



TRUE NORTH
MAGNETIC NORTH
APPROXIMATE MEAN DECLINATION 1921

FILE COPY
Map Information Office

See also Ft. Morgan (USGS)

DAUPHIN ISLAND, ALA