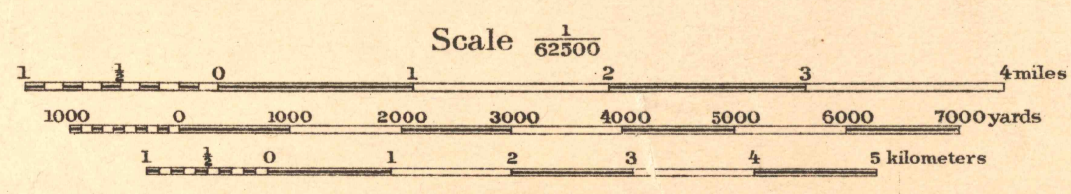


NOT MAPPED BY U. S. G. S.
PRIOR TO 1921



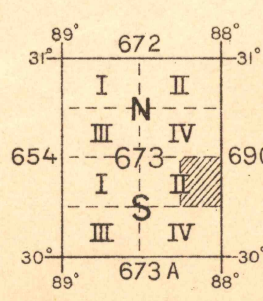
Base map from U. S. C. & G. S. Chart No. 188, map of land approaches to fortifications and other available data.
Field work and compilation under the direction of Col. W. M. Black, Corps of Engineers, U. S. A., Department Engineer, Eastern Department.
Field work by 2nd Lieut. Hughey S. Hemingway, C. A. C., U. S. Army, Nov. 1910 - Jan. 1911.
Soundings referred to mean low water.



Scale 1/62500
Contour Interval 10 feet
Datum is mean sea level

FIVE THOUSAND YARD GRID COMPUTED FROM "GRID SYSTEM FOR PROGRESSIVE MAPS IN THE U. S." ZONE C, U. S. C. & G. S. SPECIAL PUBLICATION NO. 59. (THE LAST THREE DIGITS OF THE GRID NUMBERS ARE OMITTED)

NOTE: OFFICERS USING THIS MAP WILL MARK HEREON CORRECTIONS AND ADDITIONS WHICH COME TO THEIR ATTENTION AND MAIL DIRECT TO "THE CHIEF OF ENGINEERS, WASHINGTON, D. C."



APPROXIMATE MEAN MAGNETIC DECLINATION 1921

DELCHAMPS
ALA

Engineer Reproduction Plant, U. S. Army, Washington Barracks, D. C. 1921

See Also Cedar Point Quad (USGS)