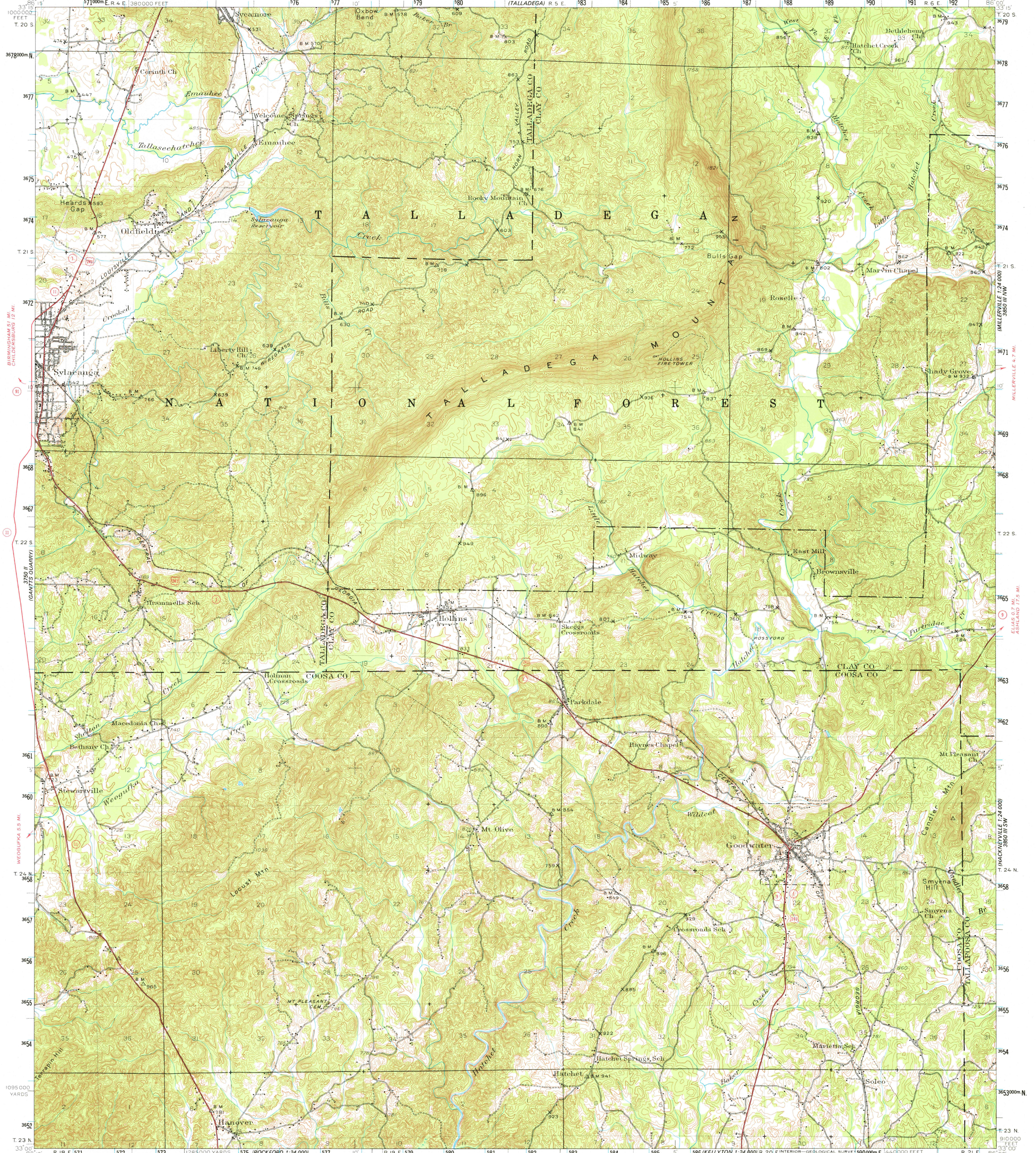


3750 N.E. (CHILDERSBURG) 1:24,000

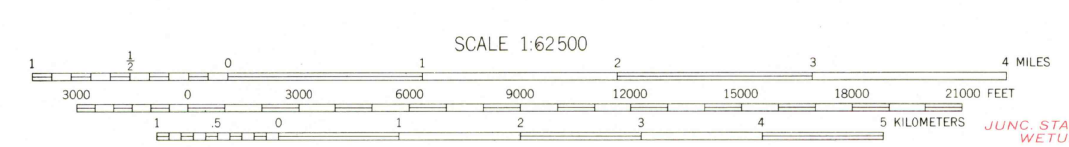
3850 N.W. (CLAMM) 1:24,000

UNITED STATES DEPARTMENT OF THE INTERIOR GEOLOGICAL SURVEY

ALABAMA GOODWATER QUADRANGLE 15-MINUTE SERIES



Map by the Geological Survey 1943-1944. Includes road classification legend and distance markers to Rockford, Wetumpka, and Montgomery.



Projection information: Polyconic projection, 1927 North American datum, 5000 yard grid based on U.S. zone system, C, 10000 foot grid based on Alabama (East) rectangular coordinate system.

CONTOUR INTERVAL 20 FEET NATIONAL GEODETIC VERTICAL DATUM OF 1929

GOODWATER, ALA. N3300-W8600/15 1944

FOR SALE BY U. S. GEOLOGICAL SURVEY, RESTON, VIRGINIA 22092 A FOLDER DESCRIBING TOPOGRAPHIC MAPS AND SYMBOLS IS AVAILABLE ON REQUEST

USGS Historical File Topographic Division

JUN 10 1977

2350