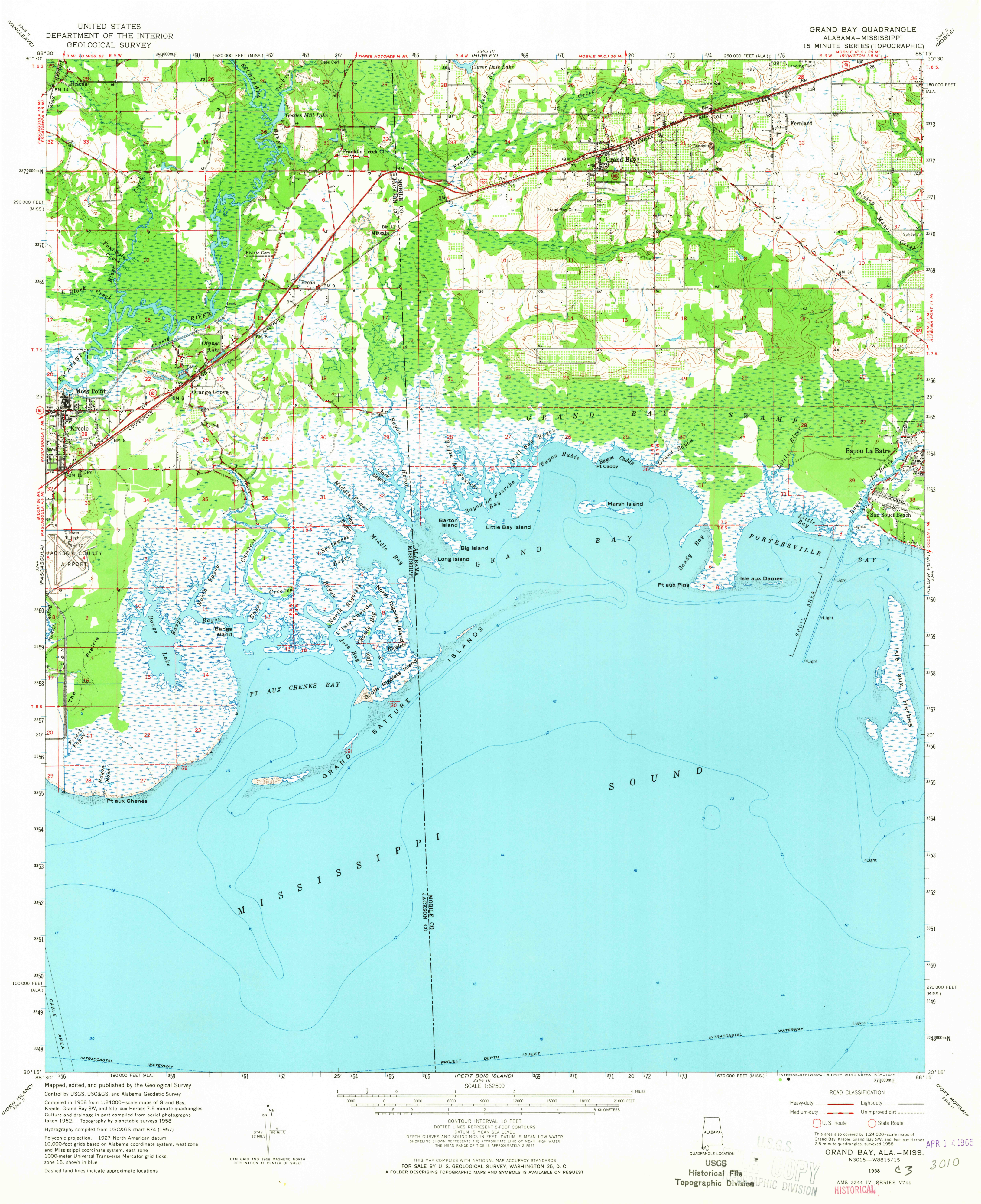
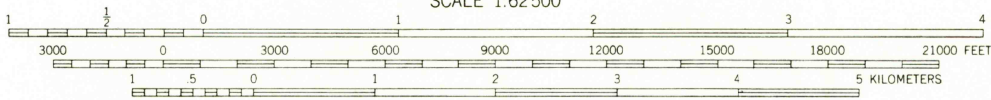


UNITED STATES
DEPARTMENT OF THE INTERIOR
GEOLOGICAL SURVEY

GRAND BAY QUADRANGLE
ALABAMA—MISSISSIPPI
15 MINUTE SERIES (TOPOGRAPHIC)



Mapped, edited, and published by the Geological Survey
Control by USGS, USC&GS, and Alabama Geodetic Survey
Compiled in 1958 from 1:24,000-scale maps of Grand Bay, Kreole, Grand Bay SW, and Isle aux Herbes 7.5 minute quadrangles
Culture and drainage in part compiled from aerial photographs taken 1952. Topography by planetable surveys 1958
Hydrography compiled from USC&GS chart 874 (1957)
Polyconic projection. 1927 North American datum
10,000-foot grids based on Alabama coordinate system, west zone and Mississippi coordinate system, east zone
1000-meter Universal Transverse Mercator grid ticks, zone 16, shown in blue
Dashed land lines indicate approximate locations



THIS MAP COMPLIES WITH NATIONAL MAP ACCURACY STANDARDS
FOR SALE BY U. S. GEOLOGICAL SURVEY, WASHINGTON 25, D. C.
A FOLDER DESCRIBING TOPOGRAPHIC MAPS AND SYMBOLS IS AVAILABLE ON REQUEST

ROAD CLASSIFICATION
Heavy-duty ——— Light-duty ———
Medium-duty ——— Unimproved dirt ———
U.S. Route —○— State Route —○—

GRAND BAY, ALA.—MISS.
N3015—W8815/15

1958

AMS 3344 IV—SERIES V744

HISTORICAL

U.S.G.S.
USGS
Historical File
Topographic Division
COPY
PHOTOGRAPHIC DIVISION

APR 14 1965

3010