

CONTROLLED RECONNAISSANCE
673-S-II-W/2

MISSISSIPPI - ALABAMA
GRAND BAY QUADRANGLE
GRID ZONE "C"

CORPS OF ENGINEERS, U. S. ARMY
TACTICAL MAP

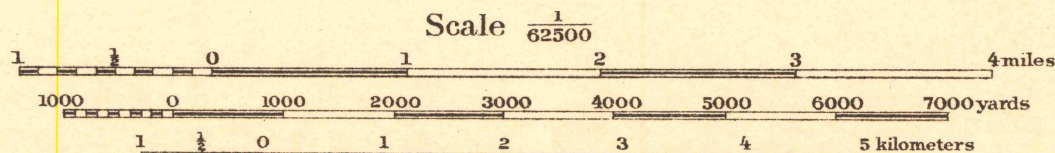


Base map compiled from U. S. C & G. S. Chart No. 189, map of Land approaches to Fortifications near Mobile, Soil survey map, Mississippi, Scranton Sheet 1909 and other available data.

Field work and compilation under the direction of Col. W. M. Black, Corps of Engineers, U. S. Army, Chief Engineer Officer, Eastern Division.

Field work by 2nd Lieut. H. S. Hemingway, C. A. C., U. S. A., 1912.

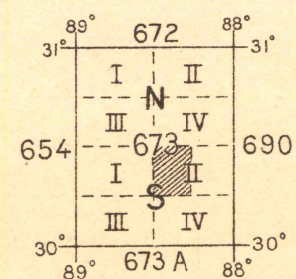
Soundings referred to mean low water.



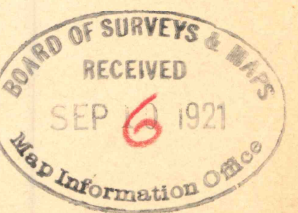
Contour Interval 10 feet
Datum is mean sea level

FIVE THOUSAND YARD GRID COMPUTED FROM "GRID SYSTEM FOR PROGRESSIVE MAPS IN THE U. S." ZONE C. U. S. C. & G. S. SPECIAL PUBLICATION NO. 59. (THE LAST THREE DIGITS OF THE GRID NUMBERS ARE OMITTED)

NOTE: OFFICERS USING THIS MAP WILL MARK HEREON CORRECTIONS AND ADDITIONS WHICH COME TO THEIR ATTENTION AND MAIL DIRECT TO "THE CHIEF OF ENGINEERS, WASHINGTON, D. C."



Board of Surveys & Maps
FILE COPY
Map Information Office



GRAND BAY

Engineer Reproduction Plant, U. S. Army, Washington Barracks, D. C. 1921

ALABAMA