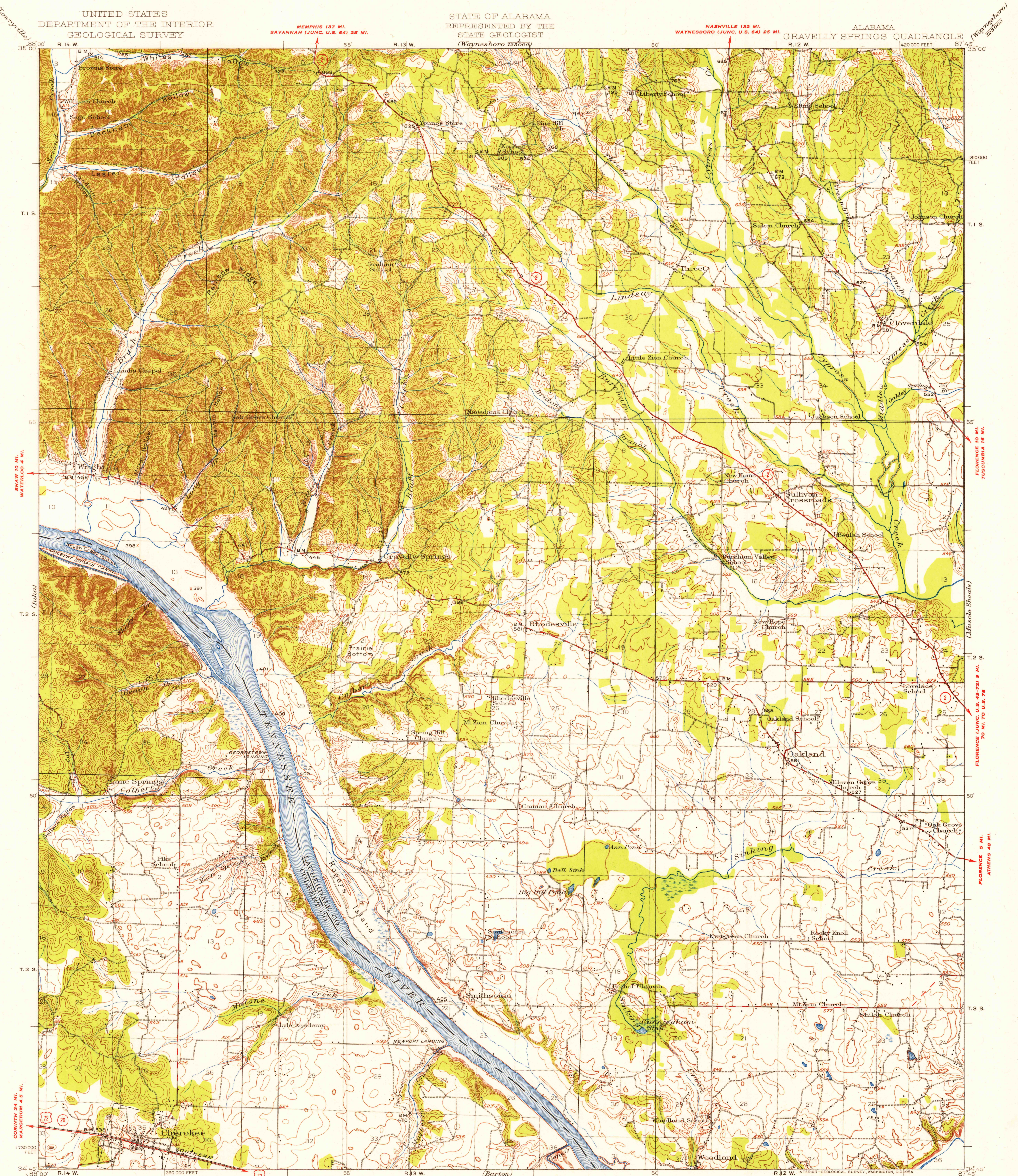


UNITED STATES
DEPARTMENT OF THE INTERIOR
GEOLOGICAL SURVEY

STATE OF ALABAMA
REPRESENTED BY THE
STATE GEOLOGIST
(Waynesboro 125000)

ALABAMA
GRAVELLY SPRINGS QUADRANGLE
1420 000 FEET 87° 45' 00"



Topography by Corps of Engineers, U.S. Army, B.A. Jenkins, W.K. McKinley, J.C. Hilliard, E.V. Holloway, and W.C. Thompson. Control in part by U.S. Coast and Geodetic Survey. Surveyed in 1924.

ROAD CLASSIFICATION
Heavy-duty ——— 2 LANE 2 LANE Light-duty ———
Medium-duty ——— 4 LANE 6 LANE Unimproved dirt ———
U.S. Route State Route

APPROXIMATE MEAN MAGNETIC NORTH
TRUE NORTH
MAGNETIC NORTH

SCALE 1:62500
3000 0 3000 6000 9000 12000 15000 18000 21000 FEET
1 .5 0 1 2 3 4 5 KILOMETERS

CONTOUR INTERVAL 20 FEET
DATUM IS MEAN SEA LEVEL

FOR SALE BY U. S. GEOLOGICAL SURVEY, WASHINGTON 25, D. C.
A FOLDER DESCRIBING TOPOGRAPHIC MAPS AND SYMBOLS IS AVAILABLE ON REQUEST

U.S.G.S.
FILE COPY
TOPOGRAPHIC DIVISION

USGS
Historical File
Topographic Division

GRAVELLY SPRINGS, ALA.
N3445-W8745/15

1924

HISTORICAL

JAN 19 1955

1140